



Pathways2Resilience

A project supporting the **EU Mission on Adaptation to Climate Change**

23 November 2023



Funded by the European Union under grant agreement No 101093942. Views and opinions expressed are however those of the author(s) only and do not necessarily reflect those of the European Union or of CINEA. Neither the European Union nor the granting authority can be held responsible for them.

Pathways2Resilience accelerates climate adaptation in Europe

Supporting the EU Mission on Adaptation to Climate Change, the Pathways2Resilience project will empower the most vulnerable European regions and communities to design locally-led pathways towards a climate-resilient future.

€21M

allocated in sub-grants to help regions develop transformative pathways to climate resilience via **2 open calls**.

100+

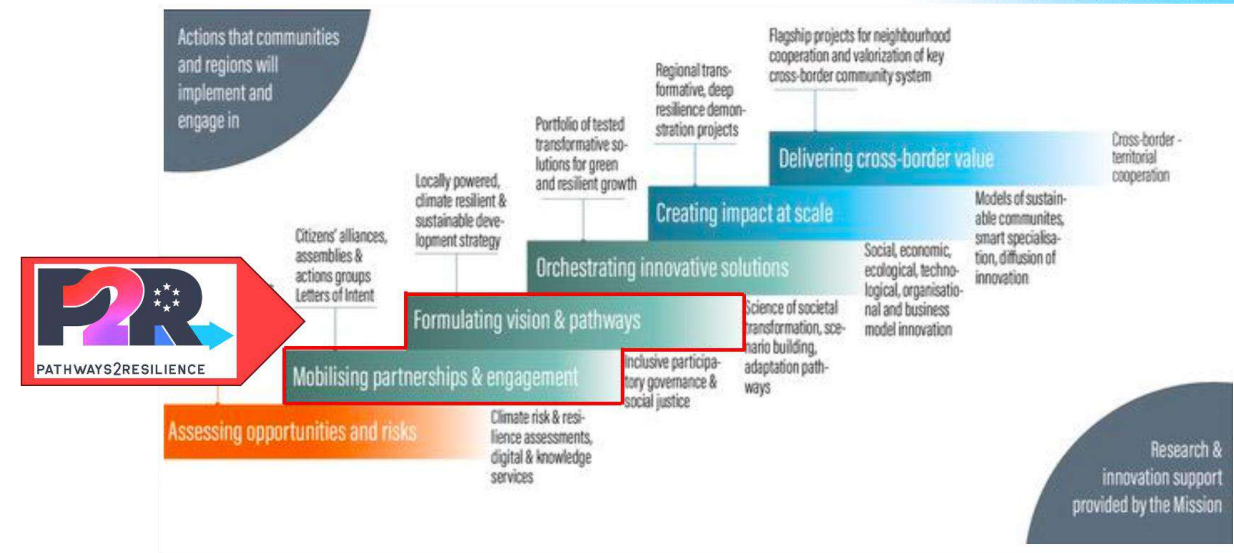
European regions and communities assisted in identifying locally-led climate resilience solutions.

10+

Innovation Practice Groups & Finance Innovation Lab to increase knowledge and design solutions and business models for climate adaptation and resilience.

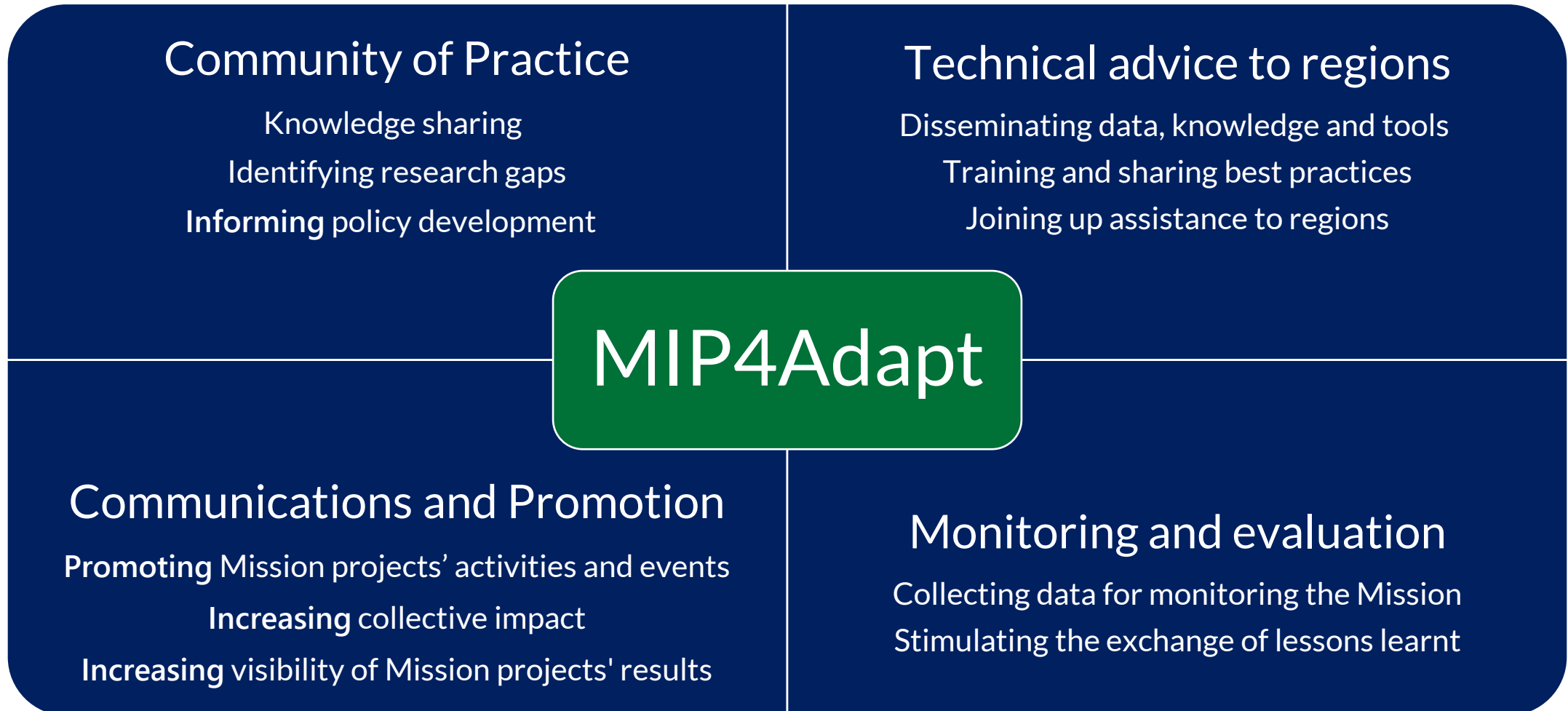
Pathways2Resilience contributes to the implementation of the Mission Adaptation's objectives.

- Its objective is to empower at least 100 European regions and communities to design climate resilience pathways by 2030.
- Total budget: 29,609,362.50 EUR from which 21M EUR is reserved for funding regional projects through public calls
- Duration: 5 years



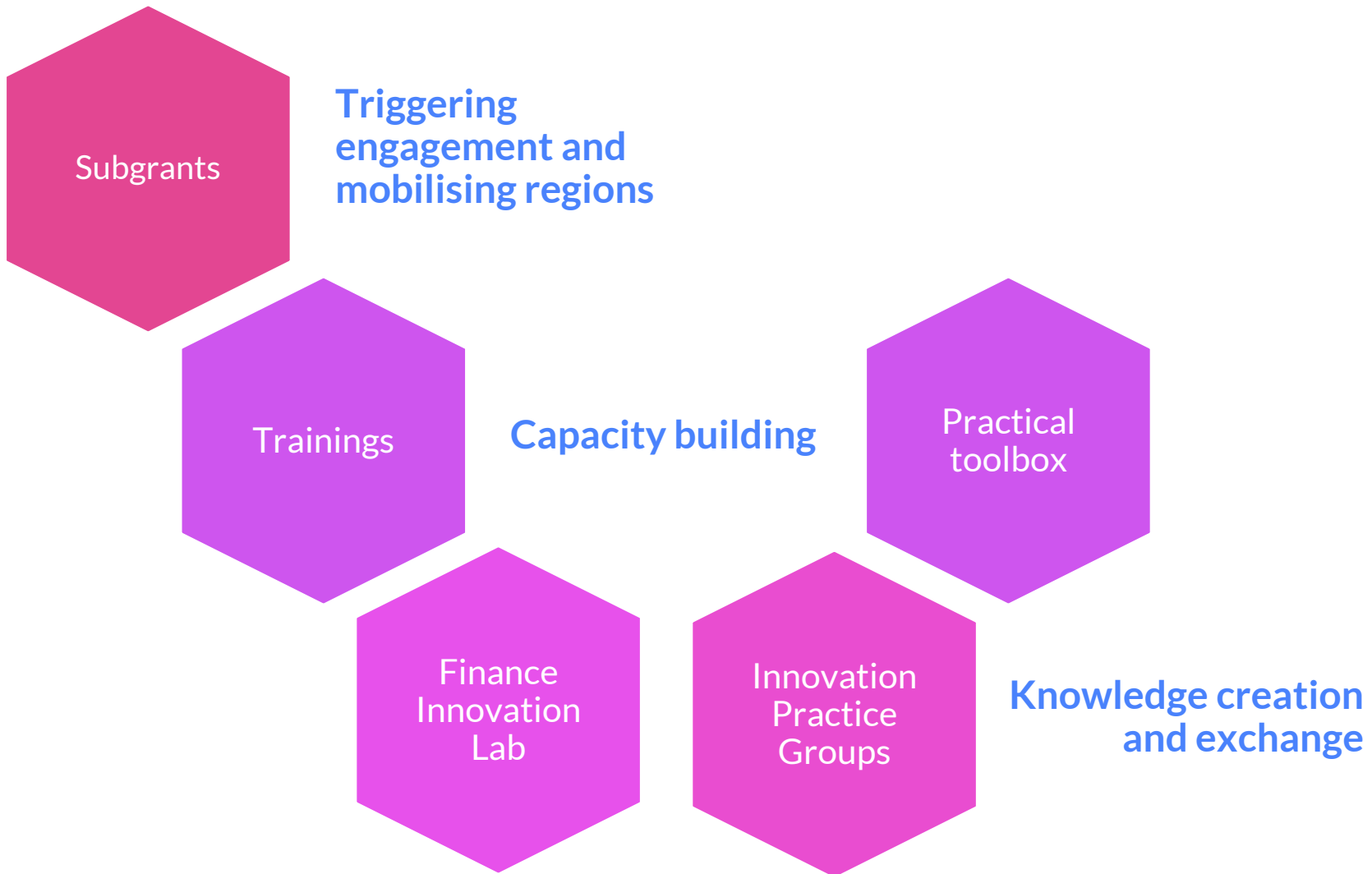


MIP4Adapt's role with Mission projects





Pathways2Resilience in actions





Co-funded by the
European Union

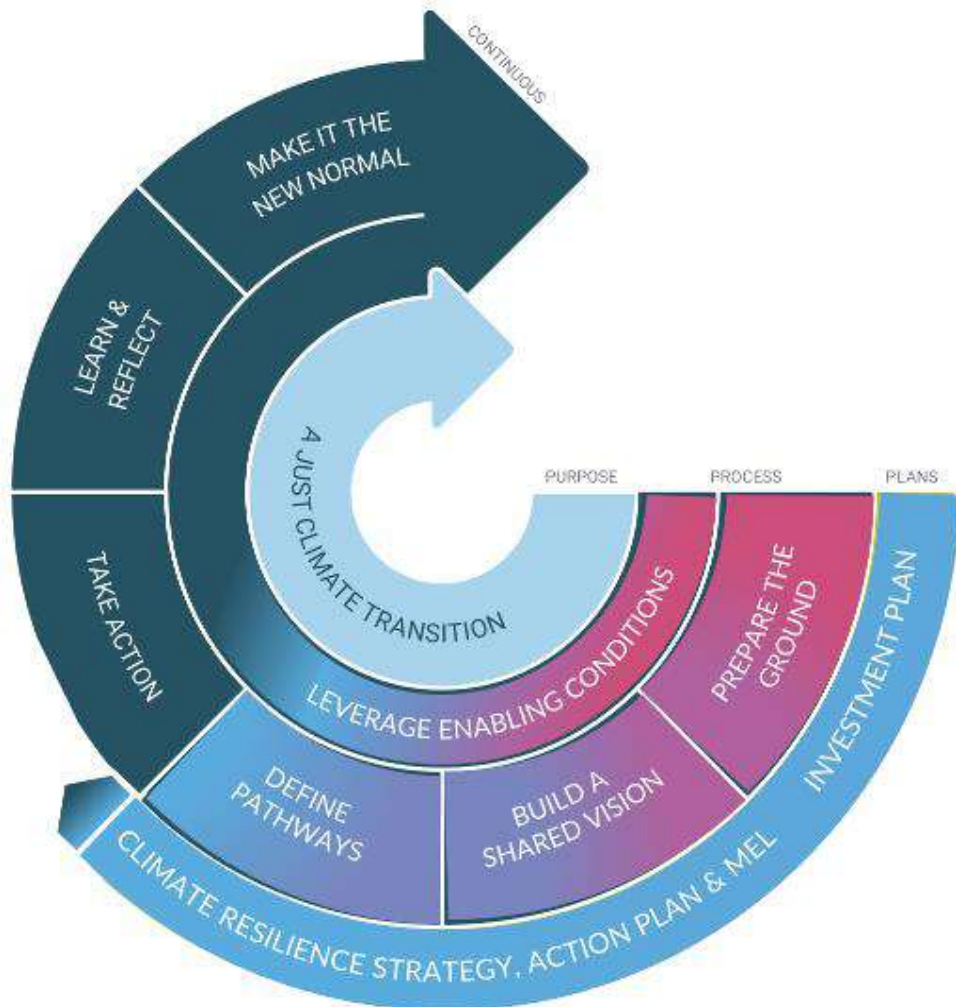


Pathways2Resilience consortium

Coordinated by EIT Climate-KIC, the initiative builds upon the expertise of 14 partners from 10 countries, leveraging a vast array of knowledge and expertise, as well as access to an extensive network of regions throughout Europe. It brings the combined strength of:

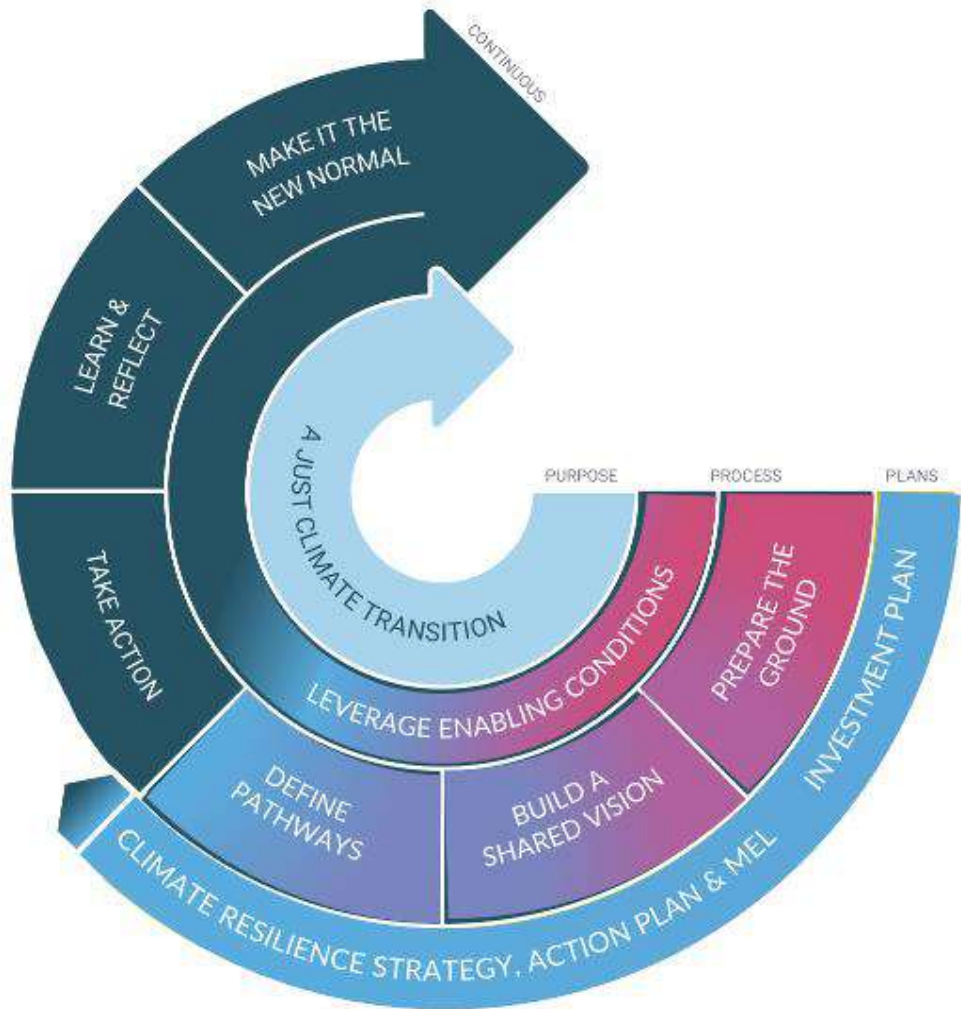
- **Regional network organisations** - to engage and build a movement of Mission Adaptation regions and communities.
- **Technical expert organisations and designers of a transformative adaptation approach** - providing the services to design pathways and innovation agendas.
- **Adaptation finance experts** - providing the services and latest state-of-the-art thinking on how regions can finance the adaptation ambitions for long-lasting impact.
- **Learning and capability building specialists** - to support regional cohorts in building resilience capabilities along their journeys towards a climate resilient future.
- **Monitoring and innovation impact partners** - to design an impact framework for benchmarking and assessing regional resilience maturity.

P2R's Regional Resilience Journey framework

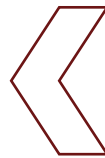
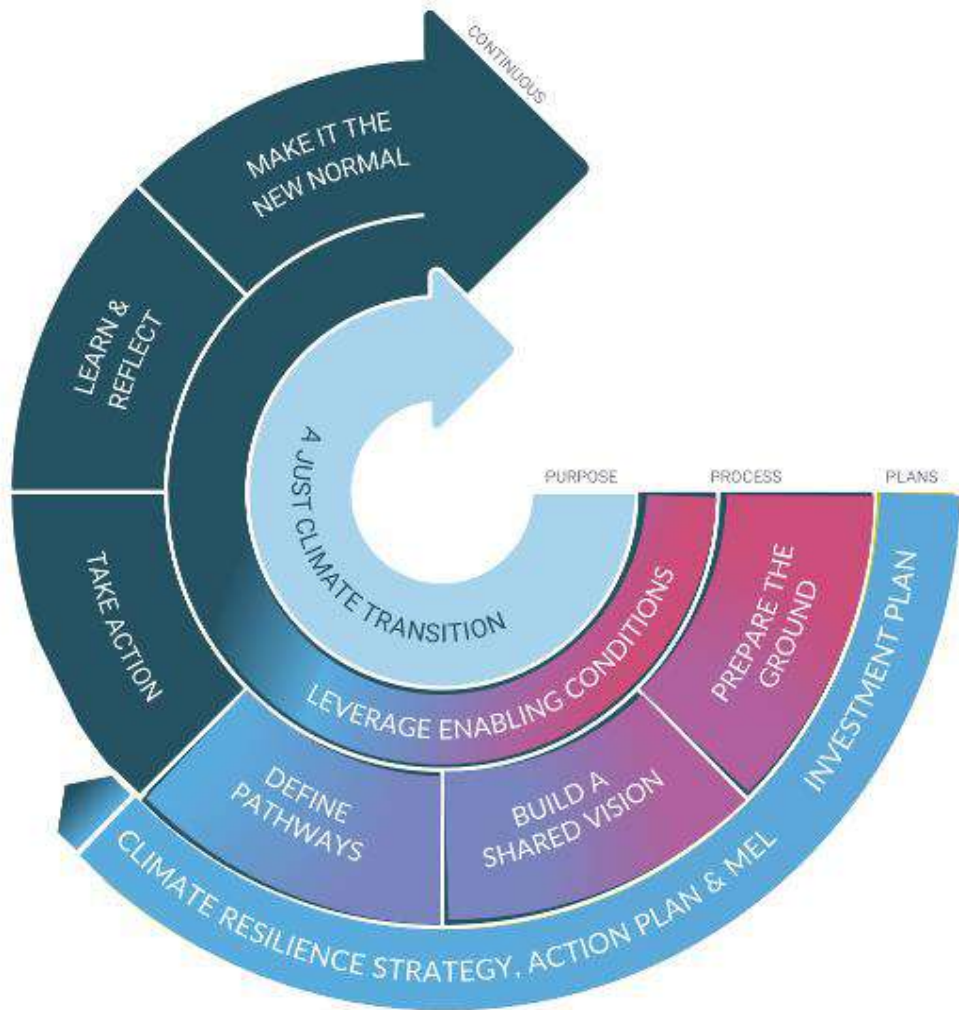


- Common yet adaptable framework for regions and communities that wish to **transition to climate resilience through a *transformational* adaptation approach**
- Designed to support in a ***just* transition to climate resilience**, integrating a range of principles, processes and practices that aim to ensure that no one is left behind
- Underpinned by **step-by-step guidance, activities, tools and milestones** to help regions and communities of all levels of maturity

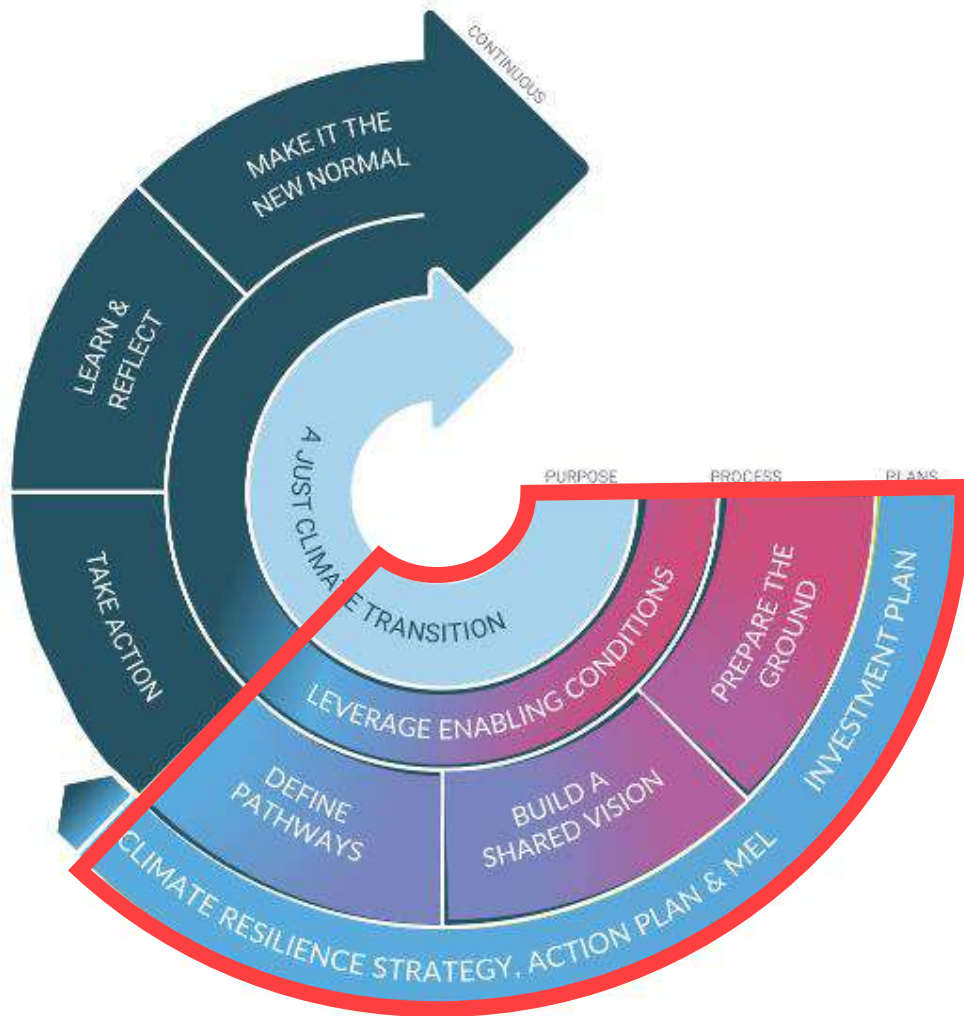
P2R's Regional Resilience Journey framework



P2R's Regional Resilience Journey framework



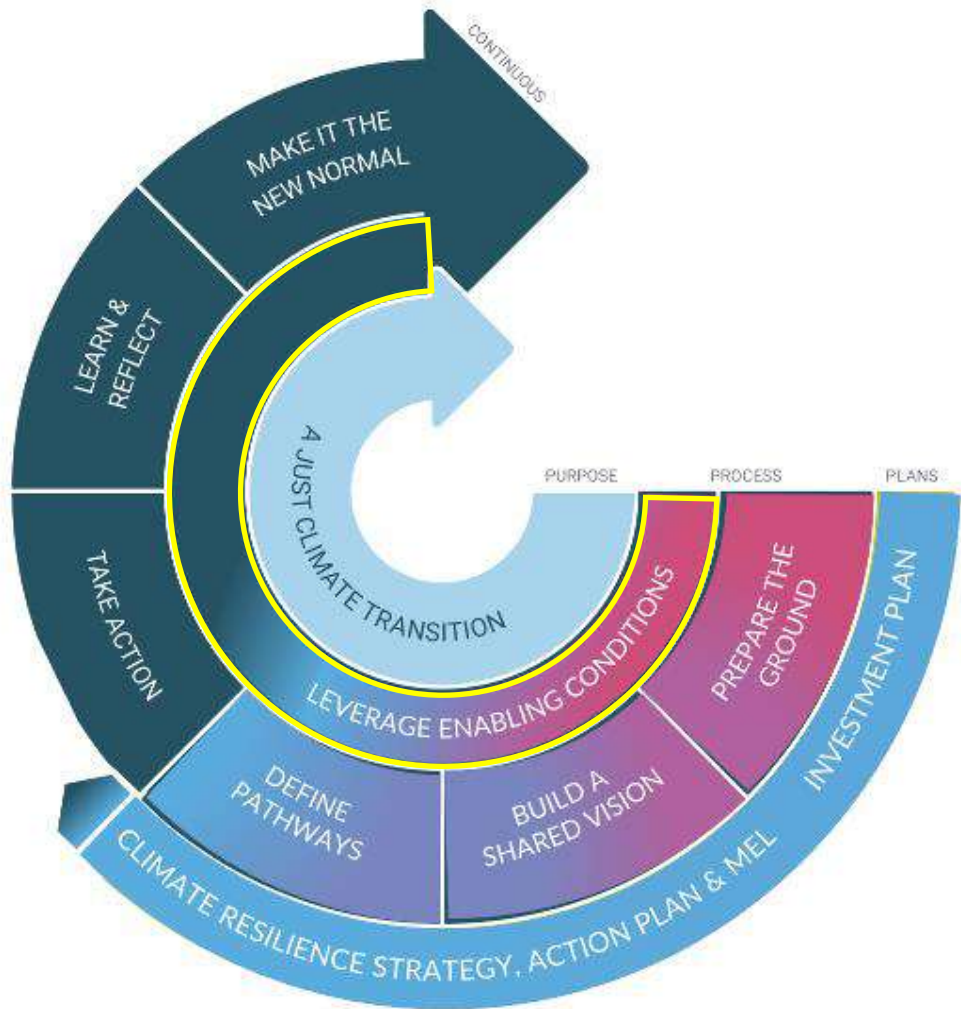
P2R's Regional Resilience Journey framework



○ Scope & coverage of P2R

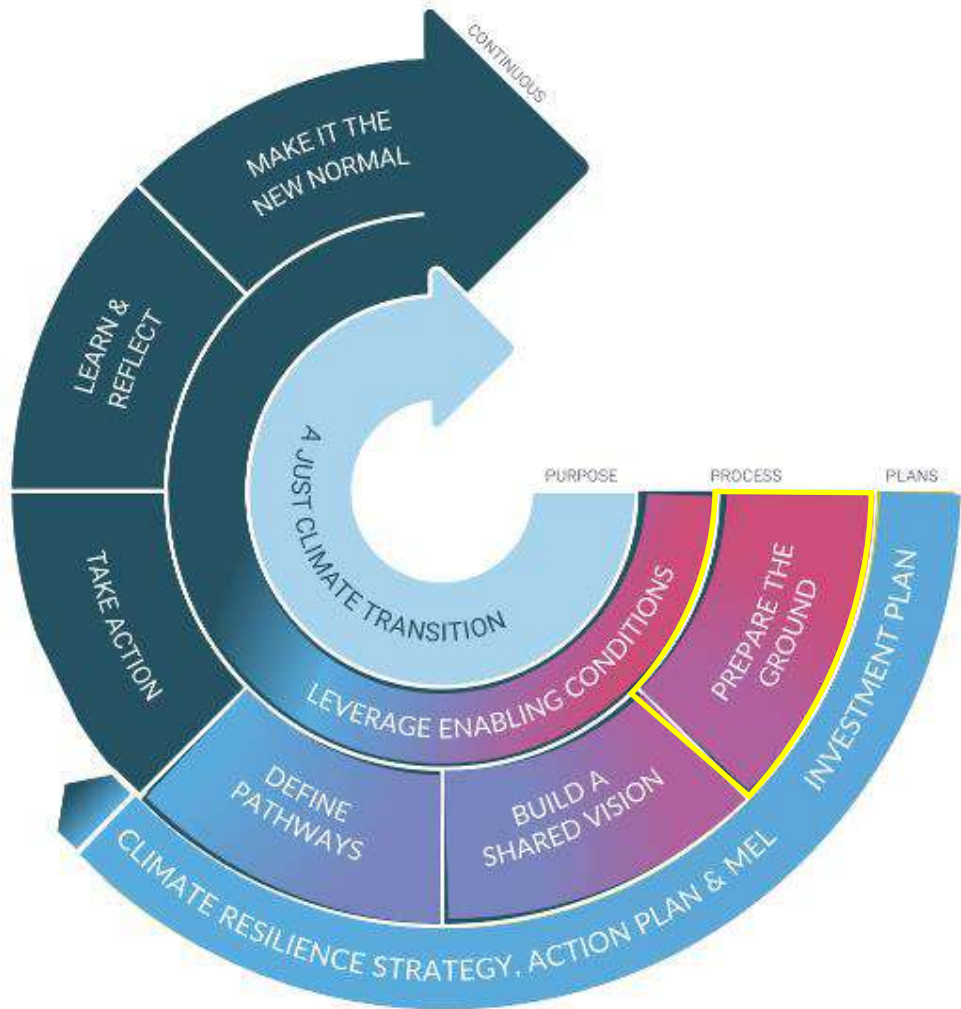
- P2R's scope is the entire transition (what the strategy and planning should address)
- P2R activities are limited to strategy and planning

P2R's Regional Resilience Journey framework



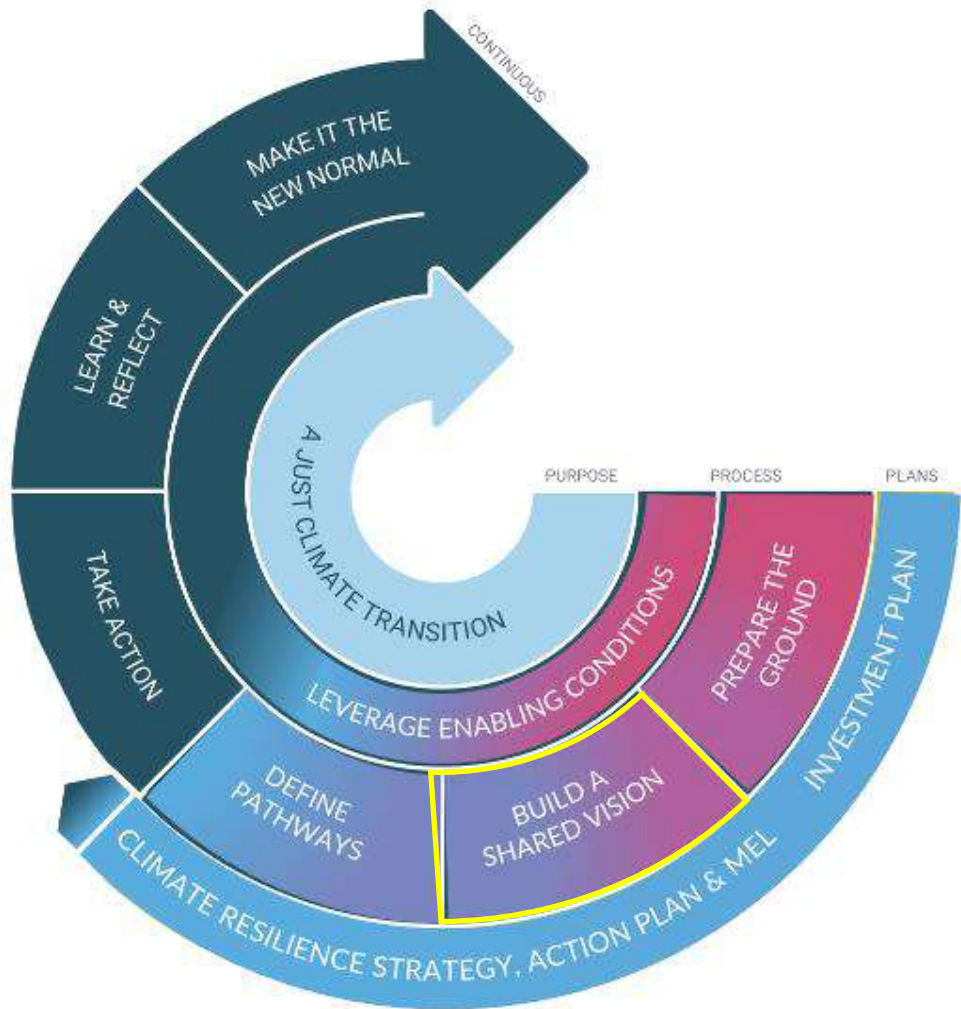
LEVERAGE CONDITIONS ENABLING TRANSITION TO CLIMATE RESILIENCE	FINANCES & RESOURCES	<ul style="list-style-type: none"> Ensure appropriate finance and resources to follow the Regional Resilience Journey Develop data, capabilities, policy, governance, and green budgeting to support an Investment Plan Develop an Adaptation Investment Plan
	KNOWLEDGE & DATA	<ul style="list-style-type: none"> Ensure access to and use of available knowledge & data supporting the transition to climate resilience Further develop data & knowledge base and provision to underpin transformations
	GOVERNANCE, ENGAGEMENT & COLLABORATION	<ul style="list-style-type: none"> Establish structures for multilevel governance and mobilise local/regional ecosystems for change Cultivate collaboration and provide for diverse stakeholder engagement and conflict resolution
	CAPABILITIES & SKILLS	<ul style="list-style-type: none"> Build capacities to facilitate and engage in transformational adaptation to climate change Provide for the re- and up-skilling needed to ensure a just transition to climate resilience
	BEHAVIOURAL CHANGE	<ul style="list-style-type: none"> Increase awareness and engagement for climate resilience Improve the use of social tipping points & systemic leverage points to accelerate transformations
	EXPERIMENT, LEARN & REFLECT	<ul style="list-style-type: none"> Experiment, exchange, and learn together throughout the resilience journey Pivot and adjust relevant parts, e.g., the shared vision, theory of change, portfolio, enabling cond.

P2R's Regional Resilience Journey framework



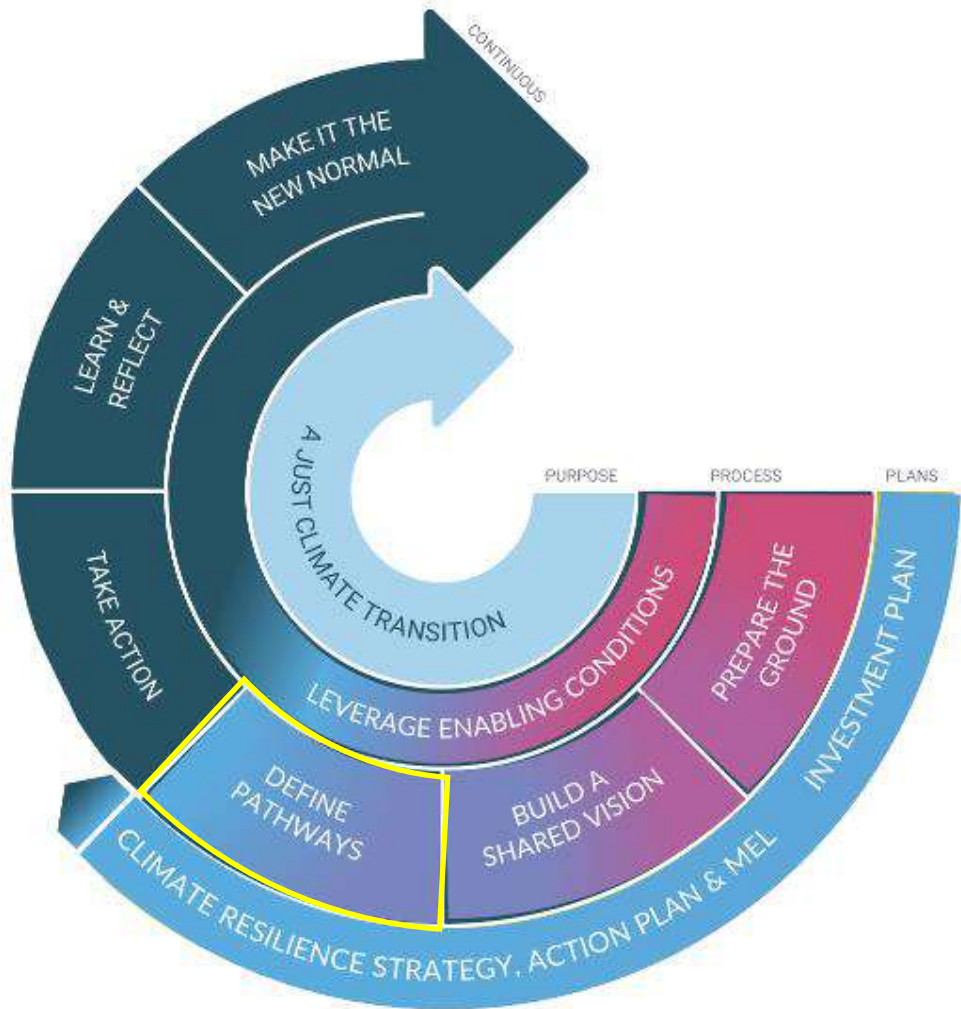
PREPARE THE GROUND	ESTABLISH A BASELINE	Gather an evidence base
		Frame the problem and higher-level objectives
	UNDERSTAND THE SYSTEM	Map relevant system, dependencies and key obstacles
		Identify stakeholders, vulnerable groups and inequities
	ASSESS RISKS & VULNERABILITIES	Assess and prioritise current & future climate risks
		Assess capabilities, competencies and resources

P2R's Regional Resilience Journey framework



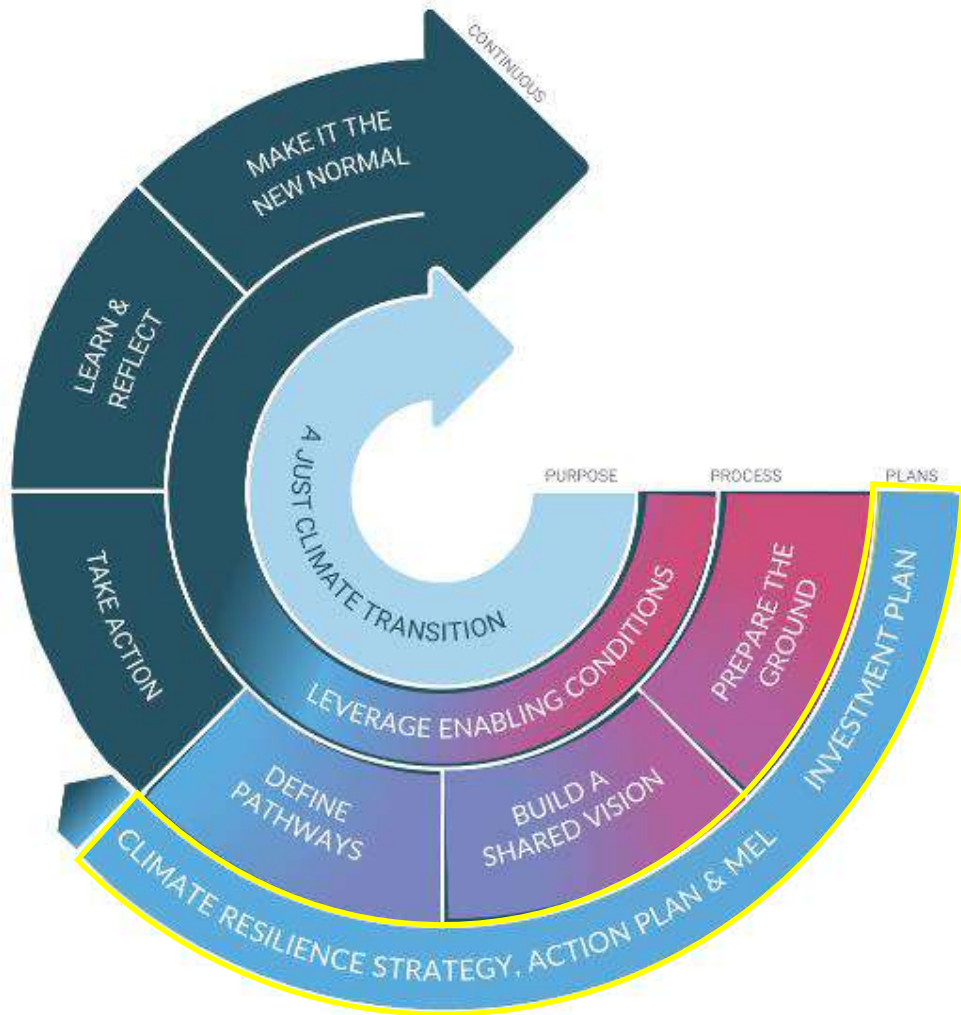
BUILD A SHARED VISION	ENSURE OWNERSHIP & COMMITMENT	Secure high-level support & activate diverse stakeholders Foster engagement, exchange, build relationships, mobilise partnerships & collaboration
	EXPLORE POSSIBLE FUTURES	Identify potentials and levers of change Explore possible futures
	AGREE ON DESTINATION OF TRANSITION	Run vision co-creation process Share and mobilise around the vision
	DEVELOP A THEORY OF CHANGE	Outline how and why a desired change is expected to happen Identify underlying assumptions

P2R's Regional Resilience Journey framework



DEFINE PATHWAYS	IDENTIFY & ASSESS OPTIONS	Identify options for climate adaptation and transformation to climate resilience
	CO-DESIGN A PORTFOLIO OF INTERVENTIONS	Assess the effectiveness of options and their needs in terms of enabling conditions
		Develop adaptation and transition pathways to climate resilience
		Develop innovation roadmap in support of pathways

P2R's Regional Resilience Journey framework



○ Envisaged outputs

- A baseline report
- A climate resilience strategy
- A climate resilience action plan
- A climate resilience investment plan

P2R's Regional Resilience Journey framework



[About](#) ▾
 [Get Involved](#) ▾
 [News & Events](#) ▾
 [Resources](#) ▾

A JUST CLIMATE TRANSITION
ENABLING CONDITIONS
PREPARE THE GROUND
BUILD A SHARED VISION
DEFINE PATHWAYS

LEVERAGE CONDITIONS ENABLING THE TRANSITION TO CLIMATE RESILIENCE

FINANCE AND RESOURCES	Secure appropriate finance and resources to follow the Regional Resilience Journey. Develop data, capabilities, policy, governance & good budgeting to support an investment plan. Develop an Adaptation Investment Plan.
KNOWLEDGE & DATA	Create access to and use of available knowledge & data to support the transition to climate resilience. Further develop data & knowledge bases and providers to underpin transformation.
GOVERNANCE, ENGAGEMENT & COLLABORATION	Establish structures for multi-level governance and enable local/regional ecosystems for change. Calibrate collaboration and provide for diverse stakeholders engagement and conflict resolution.
CAPABILITIES & SKILLS	Build capacities to facilitate and engage in transformational adaptation to climate change. Provide for the re- and up-skilling needed to ensure a just transition to climate resilience.
BEHAVIOURAL CHANGE	Increase awareness and engagement for climate resilience. Improve the use of social tipping points & systemic leverage points to accelerate transformations.
EXPERIMENT, LEARN & REFLECT	Experiment, exchange, and learn together throughout the resilience journey. Plan and adjust relevant part, e.g. the shared vision, theory of change, portfolio, enabling cond.

About
How
Tools

Leverage conditions enabling transition to climate resilience

To accelerate transformational change to climate resilience, it is fundamental to leverage the enor such change to happen. Because of the complexity of this task, it is impossible to plan for any social tipping point or transformation to occur. Instead, enabling conditions act as catalysts, smoothing the intricate process of change in multifaceted environments. They encompass a range of factors such as access to relevant knowledge and data, effective governance

<https://www.pathways2resilience.eu/regional-resilience-journey-map/>

P2R First Call for Regions and Communities

Applications welcome until
22 February 2024, 17:00 CET

Register your application via:

<https://www.pathways2resilience.eu/first-open-call/>

Helpdesk: pathways2resilience@climate-kic.org



Open Call: summary



- **Applications only through the Pathways 2 Resilience website**
 - Deadline: Thursday 22 February 2024 17:00 CET
- **First Call for Applications:**
 - 40 subgrantees
 - 210,000€
 - 18 months (July 2024 – December 2025)
- **Main selection criteria:**
 - Most vulnerable regions (high climate risk and low adaptive capacity)
 - Diversity (countries, bioregions, climate risk types, scale, etc)
- **Applicants must select a specific scope (of where they'll apply the RRJ):**
 - NUTS1, NUTS2, NUTS3, LAU or equivalent in your (eligible) country

Open Call: timeline



<u>Call Opens</u>	Wednesday 22 November 2023 17:00 CET
Information Sessions	4 December 2023 13:00-14:00 CET Online 11 January 2024 13:00-14:00 CET Online 17 January 2024 13:00-14:00 CET Online
Application Deadline	Thursday 22 February 2024 17:00 CET
Review and Selection	March – May 2024
Eligibility Notification	March 2024
Award Status Notification	May 2024
Subgrant Agreements Signed	June 2024
Publication of Call Awards	July 2024
End of Call 1 Subgrants	December 2025

Open Call: subgrantee expectations



- Test, validate and further develop the RRJ
 - **Attending the training sessions**
 - **Reviewing P2R methodologies & resources**
 - **Enriching the Climate Resilience toolbox**
- Demonstrate progress through (RRJ) Deliverables
 - **Baseline Report**
 - **Climate Resilience Strategy**
 - **Climate Resilience Action Plan**
 - **Climate Resilience Investment Plan**

Open Call: eligibility



- Applicants must be regions/communities that are:
 - Part of EU Member States or Associated Countries *(certain restrictions apply to United Kingdom, Hungary, Ukraine, Russia, Belarus)*
 - Within Europe's biogeographical regions
- Applicant leads/coordinators must be legal entities defined as:
 - Public authorities at Nomenclature of Territorial Units for Statistics (NUTS) 1, 2 and 3 level, and Local Administrative Units (LAU); OR
 - Bodies governed by public law in compliance with Article 2.4 of the Directive 2014/24/EU.
- Other entities that can be part of a consortium:
 - Private non-profit bodies and Small and Medium Enterprises (SME)

Sole applicants and consortia are both eligible, but must have a **single designated Coordinator**.

Open Call: eligible activities



Eligible subgrant activities will follow the provision for activities under Horizon Europe costs categories, and will be organized along the following:

- Activities to develop regional pathways, plans and innovation portfolios towards climate resilience building on existing assessments of trends and projections of future climate change risks.
- Activities supporting the process of developing the pathways as specified in the scope topic text including relevant stakeholder engagement and capacity building.
- Activities related to communication, dissemination and exploitation and project management activities.

Non-eligible subgrant activities include activities related to demonstration and deployment of climate adaptation solutions.

Open Call: selection



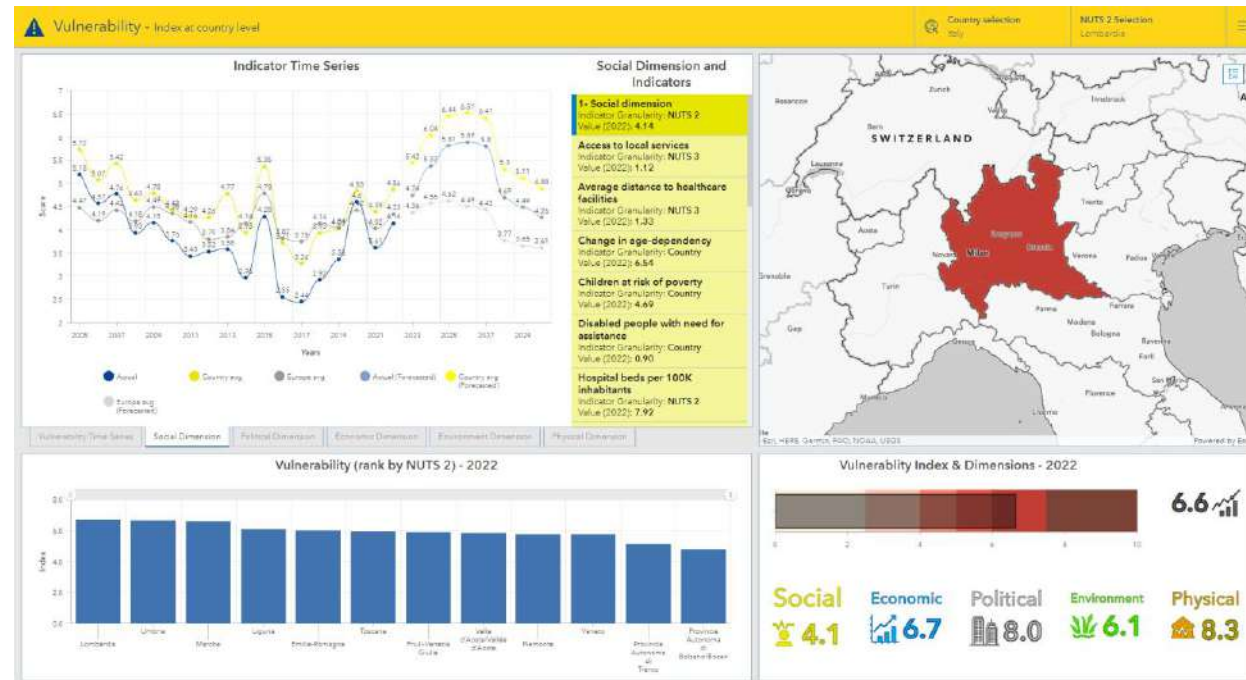
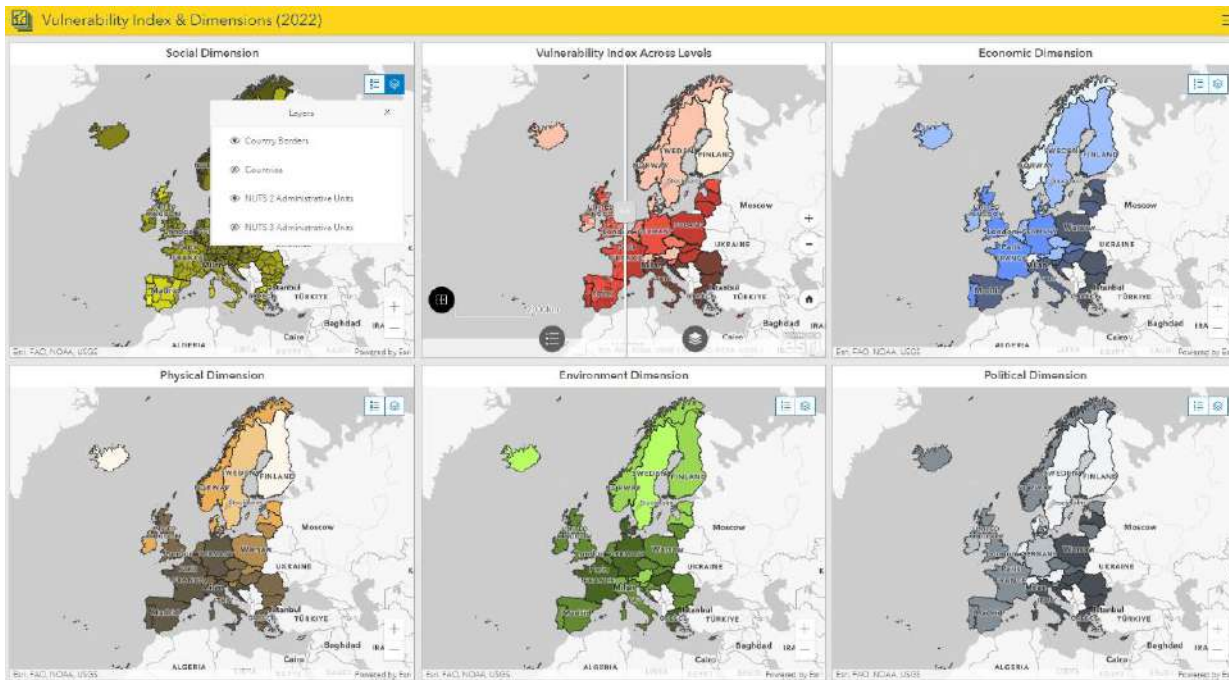
- Pre-screening: Vulnerability (high climate risk and low adaptive capacity)
- External Evaluation:
 - Commitment to EU Mission Adaptation
 - Stakeholder engagement
 - Justice approach (e.g.: ethics, sustainability, gender, migration, marginalised groups, accessibility, etc)
 - Need for support
 - Knowledge sharing (beyond the region)
 - Resources mobilization plan
- Strategic/Portfolio selection:
 - Countries, bioregions, climate risk types, scale, adaptation priorities

Open Call: selection (JRC – Vulnerability Index)

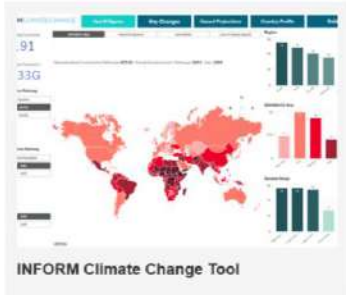


<https://drmkc.jrc.ec.europa.eu/risk-data-hub#/vulnerabilityhome>

<https://drmkc.jrc.ec.europa.eu/risk-data-hub#/dashboardvulnerability>

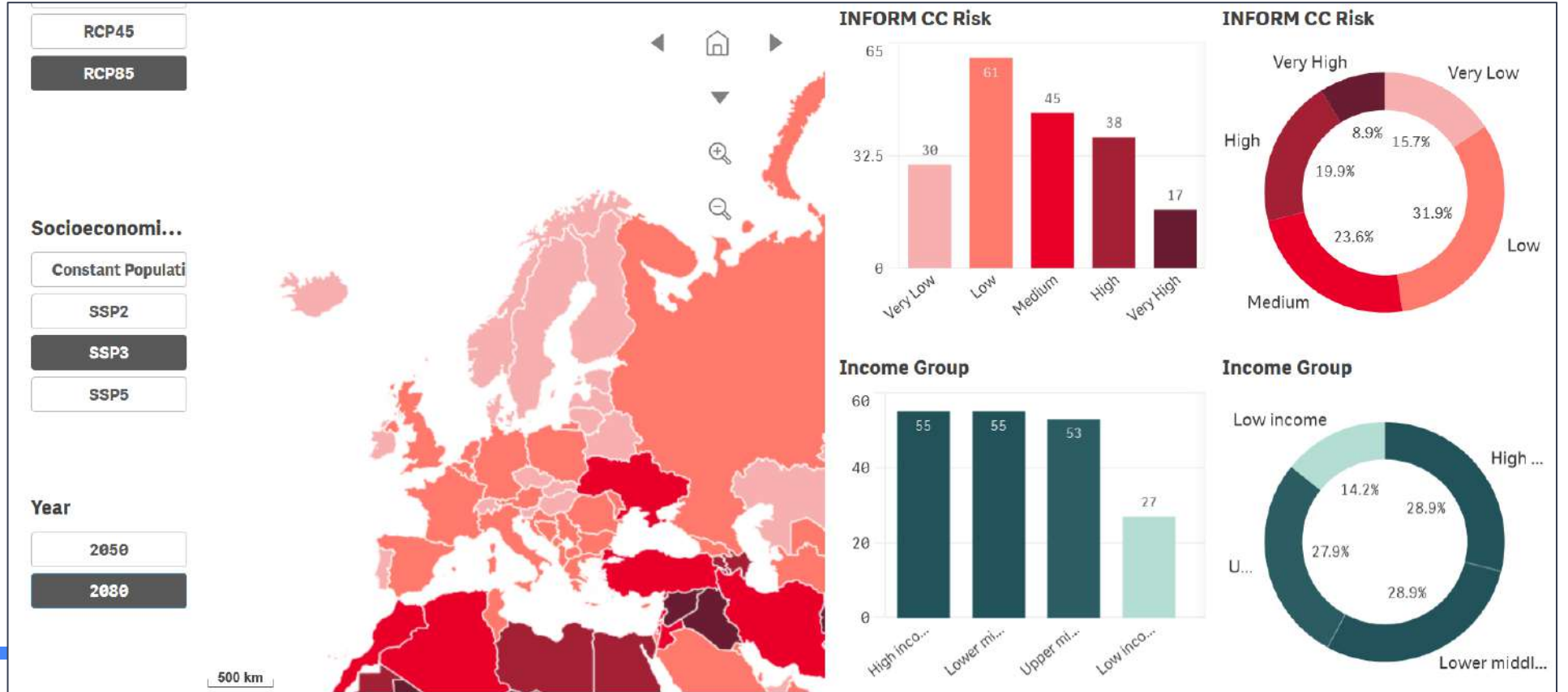


Open Call: selection (JRC – INFORM climate)



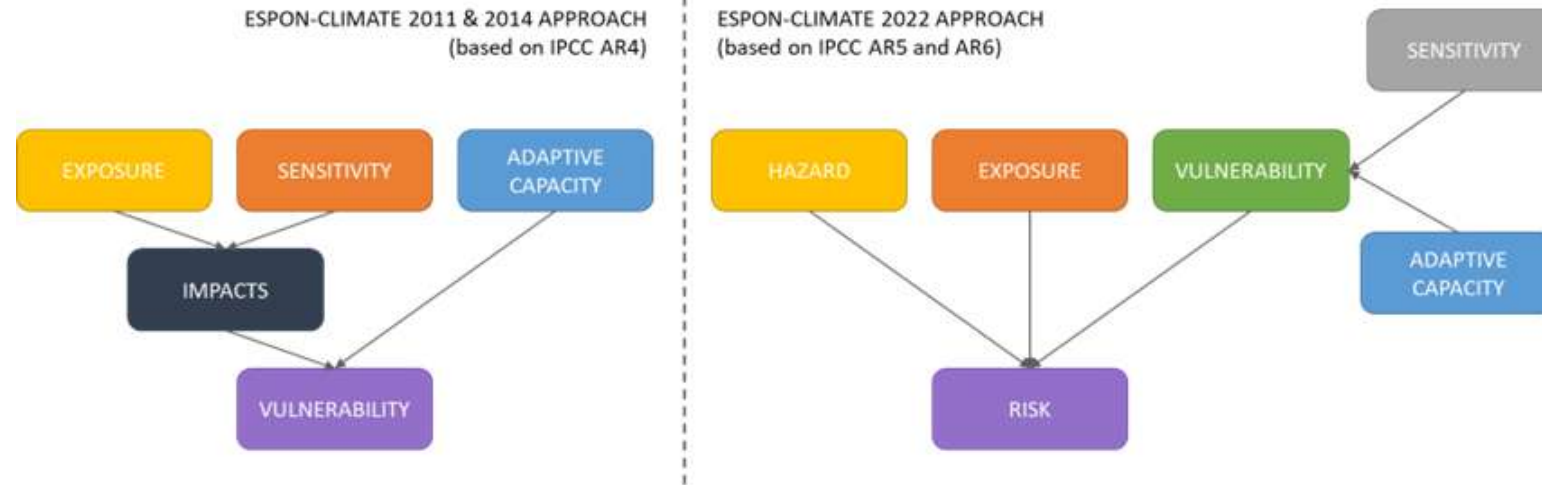
<https://drmkc.jrc.ec.europa.eu/inform-index/INFORM-Climate-Change>

INFORM Climate Change Risk Index		
Hazard & Exposure		Vulnerability
Level of coping capacity		
Very High	High	Very High
High	Medium	High
Medium	Low	Medium
Low	Very Low	Low
Very Low		Very Low





Open Call: selection (ESPON Climate)



- Coverage for ESPON countries (EU27 + 5) at regional level (NUTS3).
- Methodology update (from IPCC AR4 to AR6).

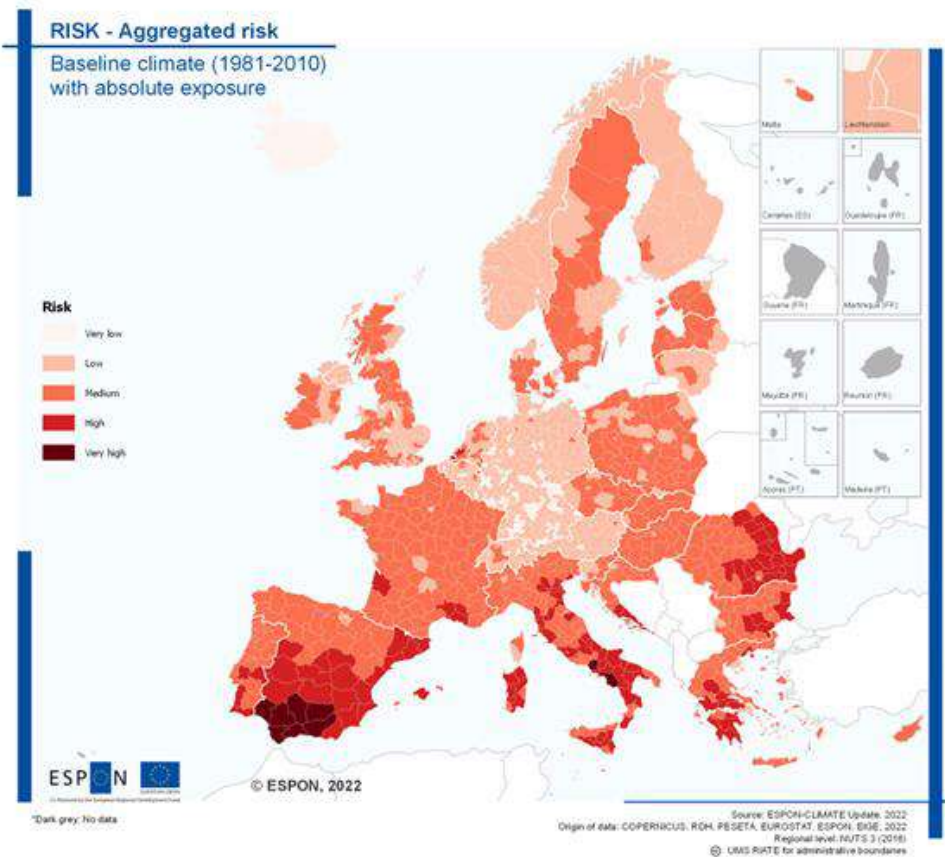
- Different **climate scenarios** (baseline, RCP2.6, RCP4.5 and RCP8.5).
- **Data update and alignment** with other European initiatives:

- **Risk Data Hub (JRC DRKMC).**
- **PESETA IV (JRC).**
- Copernicus Climate Data Store.
- **EEA European Climate Data Explorer.**
- Eurostat.
- Eurostat GISCO.
- EEA E-PRTR (European Environment Agency).
- UNESCO.
- EIGE (European Institute for Gender Equality).

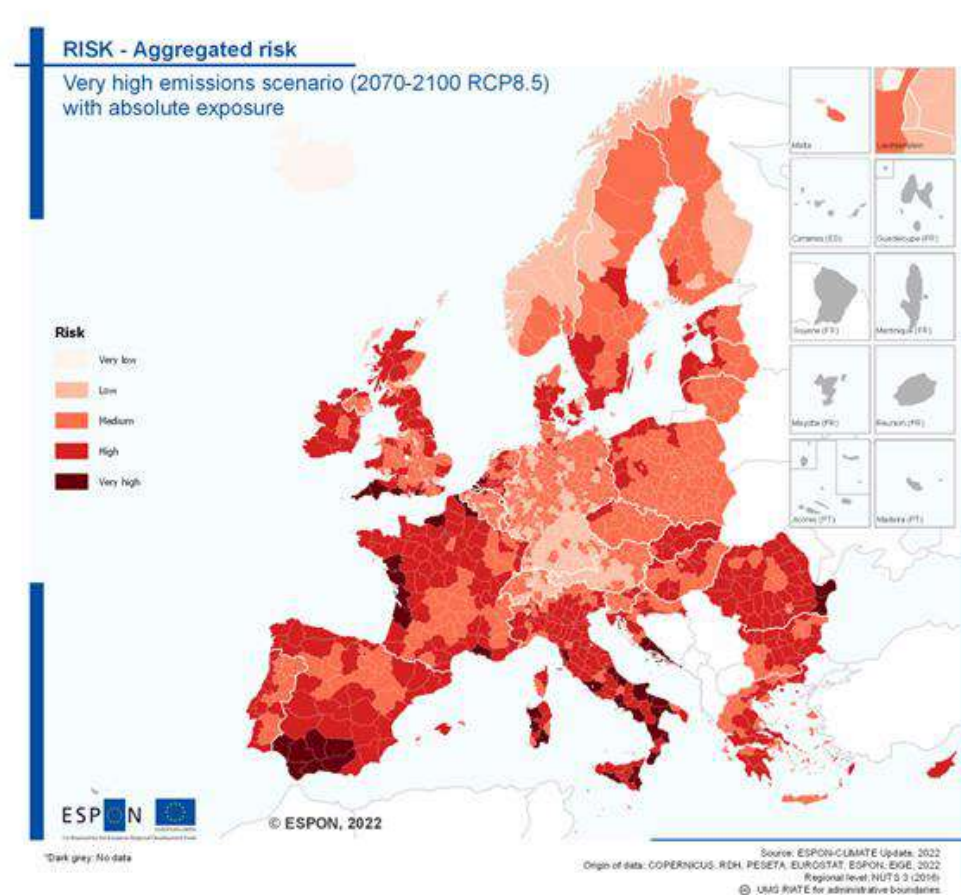
Open Call: selection (ESPON Climate)



Aggregated risk – baseline scenario



Aggregated risk – very high emissions scenario



Open Call: selection (ESPON Climate)

Welcome to the ESPON Database Portal

This site supplies different users (researchers, policy makers and stakeholders at regional and local level) with data, indicators and tools that can be used for European territorial development and cohesion policy formulation, application and monitoring at different geographical levels.

The data included is mainly coming from European institutions such as EUROSTAT and EEA, and from all ESPON projects. By doing this, the ESPON 2020 Database contributes to better understanding territorial structures, the current situation and past and future trends of different types of European territories in relation with various geographical contexts (from local to global) and within a large variety of themes.

Topics

- Economy, Finance & Trade
- Environment & Energy
- Governance
- Labour Market
- Population & Living Conditions
- Science & Technology
- Territorial Structure
- Transport & Accessibility

Stats

- 626 single indicators (e.g.: Spatial distribution of Green Infrastructure)
- 16 multi indicators (e.g.: Employment (total) in enterprises)
 - comprising 707 individual classes (e.g.: One-person enterprises)
- 60 projects

Percentage of territorial units with data

Number of indicators by theme

Individual impact chains

The disaggregated results show that certain territories present a greater risk with comparable levels of hazard due to greater vulnerability and exposure.

Spatial implications of climate change risk in Europe

The Spatial implications of climate change risk in Europe story showcases regional disparities of risks related to heat stress, floods, droughts and wildfires.

database@espon.eu

- ❑ ESPON Database <https://database.espon.eu> / <https://gis-portal.espon.eu/arcgis/apps/sites/#/espon-hub/pages/web-maps>
- ❑ ESPON Climate - <https://www.espon.eu/projects/espon-2020/monitoring-and-tools/climate-data-and-maps-update>
- ❑ ESPON Climate Story map <https://gis-portal.espon.eu/arcgis/apps/storymaps/stories/691e08159ed943ba8d36468e5df9e141>

P2R First Call for Regions and Communities

Applications welcome until
22 February 2024, 17:00 CET

Register your application via:

<https://www.pathways2resilience.eu/first-open-call/>

Helpdesk: pathways2resilience@climate-kic.org

