

Webinar: Information session on the Pathways2Resilience programme and how to express your interest

9 June 2023



Funded by the European Union under grant agreement No 101093942. Views and opinions expressed are however those of the author(s) only and do not necessarily reflect those of the European Union or of CINEA. Neither the European Union nor the granting authority can be held responsible for them.

Agenda

- 10:00 Welcome
- 10:05 Introduction to Pathways2Resilience
Fernando Diaz-Lopez, EIT Climate-KIC, Project Coordinator
- 10:20 How to express your interest in the Pathways2Resilience programme
Heidi Johansson, ERRIN
- 10:35 Q&A session
- 11:00 End of webinar


Pathways2Resilience: *an introduction*

A project supporting the **EU Mission on Adaptation to Climate Change.**

Webinar: Info session P2R – express your interest – June 9, 2023

Dr Fernando J. Diaz Lopez, Ph.D., EIT Climate KIC



European Environment Agency  Topics Countries Data and maps **Indicators** Publications Media About us 

[Home](#) / Indicators / Economic losses from climate-related...



Economic losses from climate-related extremes in Europe (8th EAP)

Between 1980 and 2021, weather- and climate-related extremes caused economic losses estimated at EUR 560 billion in the EU Member States, of which EUR 56.6 billion from 2021. Analysing trends in economic losses is difficult, partly because of high variability from year to year. Some statistical analysis has revealed, however, that economic losses increase over time. As severe weather- and climate-related extreme events are expected to intensify further, it seems unlikely that the associated economic losses will reduce by 2030.

Why should we care about climate adaptation in Europe?

IN THE NEWS | 22 MAY 2023



The climate crisis is a global issue. People, especially in some parts of the world, are feeling the impacts of the climate crisis much more intensively today than we do in Europe. But it doesn't mean climate change is not already happening here, or worse, that we shouldn't feel the urgency to build resilience. In 2019, a massive heatwave cost nearly four thousand

euronews.green NEWS CLIMATE NATURE LIVING ECO-INNOVATION OPINION SERIES

[Home](#) > [Green](#) > [Series](#) > [Climate Now](#)

Hotter, drier and sunnier: What's happening to the European climate?

In partnership with  PROGRAMME OF THE EUROPEAN UNION  



Really? Our new normal?

euobserver     [Join EUobserver](#) [Login](#)

NEWS / GREEN ECONOMY

Adapting to Southern Europe's 'new normal' — from droughts to floods



The need to foster climate resilience



The climate crisis is already having major effects on everyday life in Europe.

Improving climate resilience involves assessing how climate change will create new, or alter current, climate-related risks, and taking steps to better cope with these risks.

Multiple intertwined climate resilient development pathways

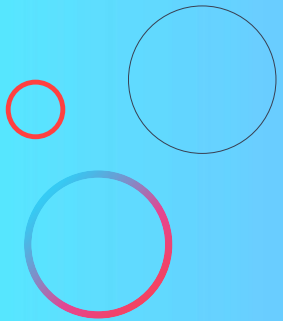


Source: Figure FAQ18.2.1 in Schipper, E.L.F., A. Revi, B.L. Preston, E.R. Carr, S.H. Eriksen, L.R. Fernandez-Carril, B.C. Glavovic, N.J.M. Hilmi, D. Ley, R. Mukerji, M.S. Muylaert de Araujo, R. Perez, S.K. Rose, and P.K. Singh, 2022: Climate Resilient Development Pathways. In: *Climate Change 2022: Impacts, Adaptation and Vulnerability*. Contribution of Working Group II to the Sixth Assessment Report of the Intergovernmental Panel on Climate Change [H.-O. Pörtner, D.C. Roberts, M. Tignor, E.S. Poloczanska, K. Mintenbeck, A. Alegria, M. Craig, S. Langsdorf, S. Lössche, V. Möller, A. Okem, B. Rama (eds.)]. Cambridge University Press, Cambridge, UK and New York, NY, USA, pp. 2655–2807, doi:10.1017/9781009325844.027.

The good news:

According to an opinion of the Committee of the Regions from 2021, **90 per cent of climate change adaptation measures was already being undertaken by local and regional authorities.**

The policy / political context





Context: EU climate adaptation ambitions

- Paris Agreement and the European Green Deal
- EU climate adaptation (CA) strategy 2021
- EU mission on adaptation to climate change – and its implementation plan.



Key elements of the new CA strategy:

1. Smarter adaptation (fill knowledge gaps, reliable data, and key role of ClimateAdapt)
2. Systemic adaptation (focus on planning, monitoring, and policy coherence, fiscal embeddedness, and the local level as bedrock; foster use of NBS)
3. Faster adaptation, including a focus on transformative adaptation and acceleration of adaptation solutions.

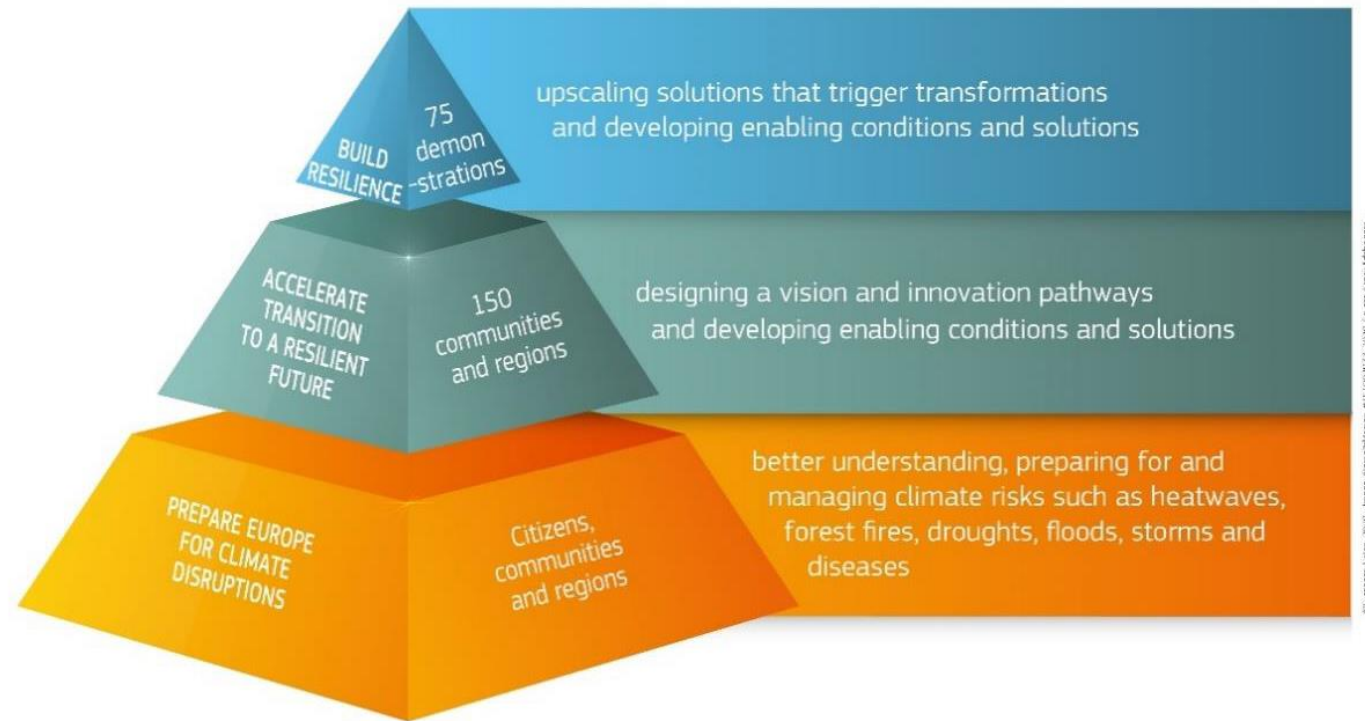


EU mission on adaptation to climate change

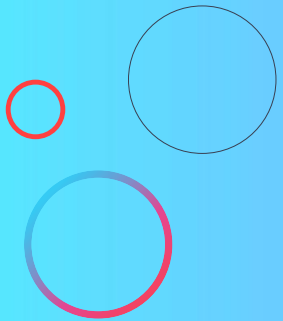
- Funded and implemented by Horizon Europe with a time horizon to 2030.
- Implemented in three stages: 2021-2023, 2024-2026, 2027-2030

The EU Mission on Adaptation to Climate Change focuses on supporting EU regions, cities and local authorities in their efforts to build resilience against the impacts of climate change.

Its objective is to empower at least 150 European regions and communities to design climate resilience pathways by 2030.



P2R project





The graphic features the European Union flag and the text 'EUROPEAN UNION' at the top left. Below it is a globe with a thermometer icon. The main text reads 'EU MISSIONS' in large white letters, followed by 'ADAPTATION TO CLIMATE CHANGE' in white on a green background, and 'Mission Charter' in blue. A yellow speech bubble contains the text 'We are part of it!'. At the bottom, it lists the hashtags '#EUmissions #HorizonEU #MissionClimateAdaptation'. A circular inset image shows a woman in a field of sunflowers using a laptop, with wind turbines in the background.

EUROPEAN UNION

EU MISSIONS

ADAPTATION TO CLIMATE CHANGE

Mission Charter

We are part of it!

#EUmissions #HorizonEU #MissionClimateAdaptation

Pathways2Resilience contributes to the implementation of the Mission Adaptation's objectives.

Pathways2Resilience contributes to the objectives of the Mission and of the Adaptation Strategy by helping the regions to:

- ✓ better understand their climate risks
- ✓ develop their pathways to be better prepared and cope with the changing climate
- ✓ identify transformative innovative solutions needed to build resilience, and how to finance them...

Charter and non-charter regions & communities are welcomed.

Key information

- Funded by the Climate Infrastructure and Environment Executive Agency (CINEA) of the EU Commission Horizon Europe programme.
- Call: **HORIZON-MISS-2021-CLIMA-02** / Action type: Research & Innovation Action (RIA)
- Coordinator: EIT Climate-KIC – Dr. Fernando J. Diaz Lopez
- Total budget: 29,609,362.50 EUR from which 21M EUR is reserved for funding regional projects through public calls
- Duration: 5 years

Starts M1
Jan 2023



Current = M6
June 2023

Ends M60
Dec 2027



Our project in the broader context of the operationalisation of the mission

Other H2020/HE missions in CA



NBRACER, R4C, RESIST, other demonstrators...



Cluster of first mission projects under H2020 Green Deal call: first pilots and tools

Larger mission projects under HE: cascade funding for risk and **climate resilience plans and strategies** & citizen engagement (objectives 1&2)

Demonstrator projects supporting implementation of solutions (objective 3)



One stop shop / knowledge repository



Umbrella platform / support to charter regions and mission projects

Pathways2Resilience accelerates climate adaptation in Europe

Supporting the EU Mission on Adaptation to Climate Change, the Pathways2Resilience programme will empower European regions and communities to co-design locally-led pathways towards a climate-resilient future, providing them with guidance adaptable to local needs.

€21M

allocated in sub-grants to help regions develop transformative pathways to climate resilience via **2 open calls**.

100+

European regions and communities assisted in identifying locally-led climate resilience solutions.

10+

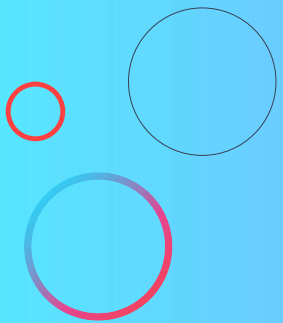
Innovation Practice Groups & Finance Innovation Lab to increase knowledge and design solutions and business models for climate adaptation and resilience.



Pathways2Resilience in actions



How to express your interest in the Pathways2Resilience programme





The programme in action

Expression
of Interest

**Triggering
engagement and
mobilising regions**

- **The Expression of Interest process aims to mobilise at least 150 regions and communities willing to accelerate their transformation towards climate resilience.**
- This early-stage engagement with regions and communities will allow to:
 - understand the interest, motivation and willingness of regions and communities to join the programme
 - identify vulnerable regions that need support
 - identify the adaptation barriers and support needs of regions and communities, which will be used in the co-design of the programme's services and activities
 - understand the local governance and engagement of key stakeholders for adaptation activities

HOW? An Expression of Interest questionnaire will be disseminated through tailored campaigns targeting all European regions and communities, including the most vulnerable ones.



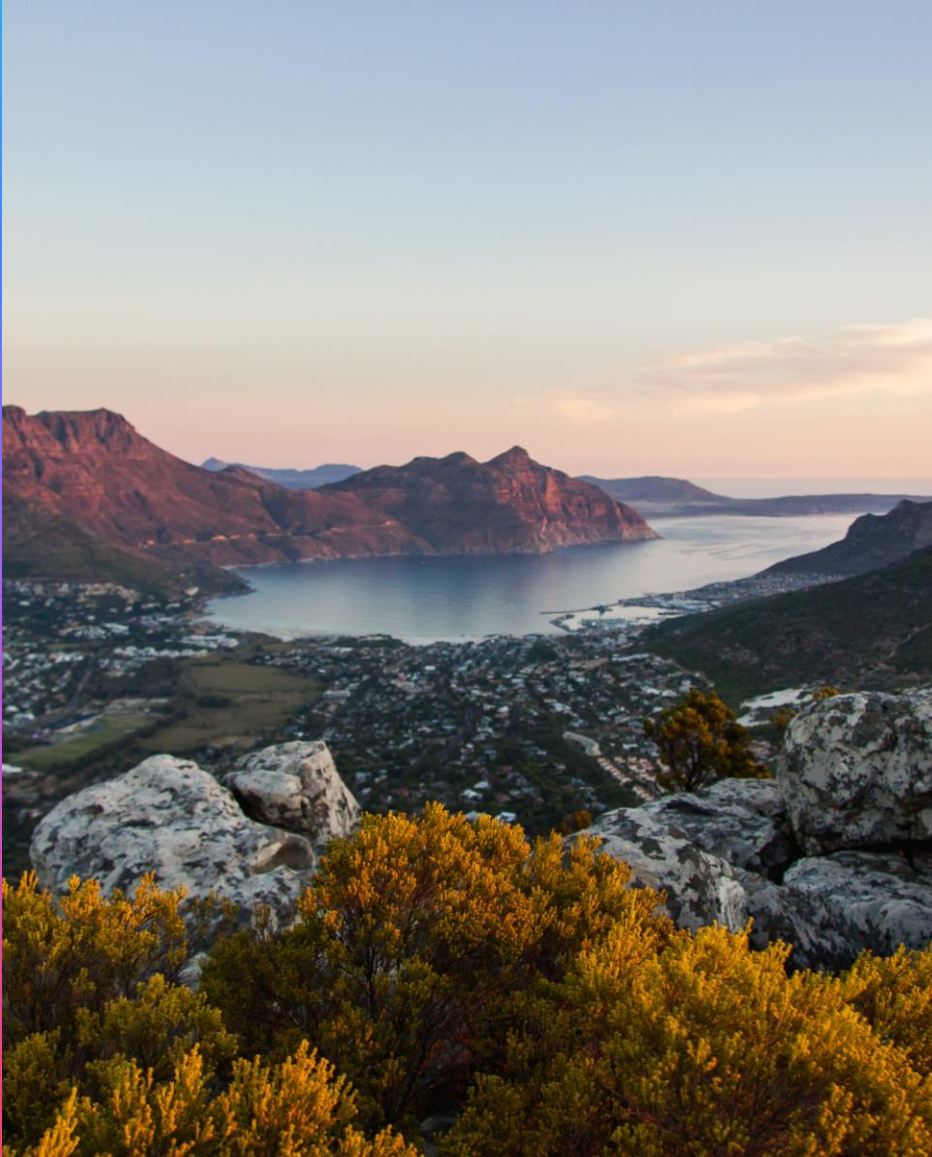
Expression of Interest questionnaire

- The Expression of Interest questionnaire is hosted on the EU Survey Platform
 - Questionnaire available [here](#)
 - Closes on 15 September 2023 at 18:00 CEST
 - Includes six modules, each consisting of 1-7 questions
 - Takes 20 minutes to complete
 - Should be completed in English
- Helpdesk managed by ERRIN available at: helpdesk@pathways2resilience.eu
 - Only for questions related to the Expression of Interest process
 - Responses within 1-3 working days
- Not mandatory to complete the questionnaire to later apply for the Pathways2Resilience calls for proposals
- Mandatory application process for the calls for proposals for all regions and communities



Why should regions respond to the Expression of Interest questionnaire?

- To receive first-hand information on the opening of the calls for proposals and invitations to information sessions organised by the project in relation to the calls
- To express their interest to receive support by the project, in the form of matchmaking activities and facilitated discussions, to engage local stakeholders relevant to the region's adaptation work
- To help co-designing the support services and capacity-building activities developed by the project, ensuring that they correspond to regions' interests and needs



Who can respond to the Expression of Interest questionnaire?

- Local and regional public authorities in EU Member States and Horizon Europe Associated Countries*
 - Open to regions and communities on NUTS1, NUTS2 and NUTS3 levels and Local Administrative Units (LAU)
 - People working in a relevant department within the public administration
- Mission Adaptation Charter signatories and non-signatories
- No signature or endorsement by a person holding a high-level political position in the region or community is needed

Horizon Europe Associated Countries: Albania, Armenia, Bosnia and Herzegovina, Faroe Islands, Georgia, Iceland, Israel, Kosovo, Moldova, Montenegro, North Macedonia, Norway, Serbia, Tunisia, Turkey and Ukraine.

After completing the Expression of Interest questionnaire

- Regions and communities that have expressed their interest in the funding managed by Pathways2Resilience will be contacted for any activities and information related to the calls for proposals
- Regions and communities that have expressed a need for support with engaging their local adaptation stakeholders will be contacted for this purpose
- An Expression of Interest can be withdrawn at any point by emailing the Helpdesk at: helpdesk@pathways2resilience.eu
- A second call for Expressions of Interest will open ahead of the second call for proposals (2024)

Thank you!

Connect with us to stay up to date



@Pathways2Resilience



@P2Resilience



hello@pathways2resilience.eu

