



Funded by
the European Union

Call for Applications: Pathways2Resilience (P2R)

Call 2

Launch: May 2025
Closing: August 2025

Document developed by Ricardo Silva, Jane Okafor¹

¹Climate KIC, on behalf of the P2R consortium

This document covers applications for subgrant agreement funding under Horizon Europe (HE), grant number: 101093942.



Funded by
the European Union

This call document strives to provide clear and accurate information; when necessary, the Frequently Asked Questions (FAQ) document will be updated. All updates will be communicated via the [P2R website](#) and other publication sites.

All inquiries must be sent to: pathways2resilience@climate-kic.org. Please do not contact P2R consortium members or Climate KIC staff outside of this designated contact.

1	Call Summary	4
1.1	Adaptation to Climate Change Mission and Approach.....	4
1.2	Funding Amounts and Form of Subgrant and Payments.....	5
1.3	Call 2 Timeline	6
2	P2R Frameworks.....	9
2.1	Regional Resilience Journey (RRJ).....	9
2.1.1	Prepare the ground.....	10
2.1.2	Build a shared vision	10
2.1.3	Define pathways	11
2.2	The Adaptation Investment Cycle (AIC).....	11
2.3	P2R Support.....	12
2.3.1	P2R’s capacity building programme.....	12
2.3.2	P2R’s direct 1-1 support.....	13
2.3.3	Other P2R support initiatives.....	13
2.3.4	Communication	14
3	Scope.....	14
3.1	Deliverables.....	15
3.2	Outcomes.....	15
3.3	Eligible Activities.....	16
4	Eligible Subgrant Costs	16
4.1	Indirect Costs.....	17
5	Admissibility and Eligibility	7
5.1	Consortium Roles:	8
5.1.1	Consortium Coordinator.....	8
5.1.2	Consortium Partners.....	8
6	Application Submission.....	17
6.1	Submission Format.....	17
6.2	Application Language	17
6.3	Deadline	17
6.4	Data	17
6.5	Confidentiality	18
7	Review Process.....	18
7.1	Admissibility and Eligibility Review	18
7.1.1	Pre-Screening.....	18
7.1.2	Resilience Maturity Curve (RMC).....	20
7.2	Evaluation	20
7.3	Strategic Selection.....	21
7.4	Instructions and Admissibility/Eligibility, Evaluation, and Selection Criteria	23

8	Notification.....	27
8.1	Admissibility/Eligibility	27
8.2	Award/Unsuccessful Application	27
9	Complaints.....	27
9.1	Who May Submit Complaints	27
9.2	When Should a Complaint be Made	27
9.3	What Should be in a Complaint.....	27
9.4	Where to Send a Complaint	27
9.5	What Happens When a Complaint is Received	27
10	Awarded Subgrant Requirements	28
10.1	Dissemination and Intellectual Property.....	28
11	Community of Practice	28
12	Climate KIC Membership	28
13	Glossary of Terms	28
14	Annex 1 : Target number of subgrantees per country	31

1 Call Summary

The Pathways2Resilience (P2R) project aims to increase the resilience of European regions and communities in the face of climate change. While climate risks are growing and many regions/communities are struggling to cope, they are also key actors for mitigation and adaptation to its impacts. Rather than just managing those risks, P2R's approach of transformative climate adaptation seeks to build resilience by addressing the underlying systemic drivers of exposure or vulnerability to climate risks, and empower regions and communities through systems innovation and capacity building towards climate resilience.

P2R is a five-year project implemented by a consortium of 14 organizations, coordinated by Climate KIC. As part of its work, P2R will support at least 100 regions/communities within European Union (EU) Member States and Associated Countries¹ that are within Europe's biogeographical regions² with a total of 21M€, over the course of two calls, to co-design visions of a climate resilient future and corresponding transformative adaptation pathways and innovation agendas that ensure long-term impact.

By following this process, regions develop ambitious Climate Resilience Strategies and Action Plans, supplemented by sturdy Investment Plans.

Less developed regions/communities that are vulnerable to climate impacts and have low adaptive capacity need particular attention. As such, the selection process will prioritise regions/communities with heightened vulnerability³. P2R's goal is to put together a diverse and inclusive portfolio of regions, ensuring a comprehensive validation of the Regional Resilience Journey (RRJ) and Adaptation Investment Cycle (AIC) frameworks. Ultimately, this strategy will bolster the project's commitment to assisting regions and communities in developing effective transformative adaptation plans.

The project aims to provide aims to provide 100 regions/communities with financial support through subgrant agreements, up to a maximum amount of 210,000€, along with supporting services and capacity building activities for subgrants lasting up to 18 months. The first call supported the first 39 regions/communities, and the second call aims to reach the target of 100 by supporting another 61, with a targeted number across Member States and Associated Countries. This document provides all relevant information to the second call.

1.1 Adaptation to Climate Change Mission and Approach

In February 2021, the European Commission (EC) adopted an EU strategy on adaptation to climate change that sets out how the EU can adapt to the unavoidable impacts of climate change and become climate resilient by 2050. Pushing further on the belief that we must adjust now to tomorrow's climate, the EU launched a specific mission to foster the resilience of all, be it regions, cities, citizens, or companies, to climate change. The EU Mission Adaptation to Climate Change⁴, enables Europe to prepare for the impacts of climate change and accelerate the

¹https://ec.europa.eu/info/funding-tenders/opportunities/docs/2021-2027/common/guidance/list-3rd-country-participation_horizon- euratom_en.pdf

²<https://www.eea.europa.eu/data-and-maps/figures/biogeographical-regions-in-europe-2>

³Vulnerability definition as of IPCC AR6: The propensity or predisposition to be adversely affected. Vulnerability encompasses a variety of concepts and elements, including sensitivity or susceptibility to harm and lack of capacity to cope and adapt.

transformation to a climate-resilient Europe. The implementation plan specifies the goal and objectives, as well as implementation details of the mission Adaptation to Climate Change⁴. In addition, the Mission and the wider Commission recognises that resilience to climate change is a key part of a competitive Europe, as referenced in Pillar 3 of the recent EU Competitiveness Compass⁵.

1.2 Funding Amounts and Form of Subgrant and Payments

Call 2 aims to award a total of 12,810,000€ to 61 subgrantees. Financial support will be provided through subgrant agreements based on and reimbursed against actual eligible incurred costs.

Payments to subgrantees will be made in instalments to allow for monitoring of deliverables and risk mitigation, following the planned payment schedule below. Payments will be subject to satisfactory reporting and associated financial risk factors, as outlined in the subgrant agreements⁶. See Section 10 Awarded Subgrant Requirements for more detail.

Payment instalment	Description	Percent
1	Pre-payment made after subgrant agreement is signed.	30
2	Payment made within 6 months after approval of 1 st reporting period (month 1-9).	40
3	Payment made within 6 months after approval of 2 nd reporting (month 10-18).	30

⁴https://ec.europa.eu/info/sites/default/files/research_and_innovation/funding/documents/climat_mission_implementation_plan_final_for_publication.pdf

⁵ https://ec.europa.eu/commission/presscorner/detail/en/ip_25_339

⁶ See the subgrant agreement template here: <https://www.climate-kic.org/wp-content/uploads/2023/11/Financial-Support-Agreement-Template-P2R-Consolidated-For-Posting.pdf>.

1.3 Call 2 Timeline

Call Opens	Thursday 15 May 2025 at 17:00 CET
Information Sessions	22 May 2025 13:00-14:00 CEST Online 8 July 2025 14:00-15:00 CEST Online 23 July 2025 13:00-14:00 CEST Online Session information will be posted on the P2R website .
Final Frequently Asked Question version posted ⁷	Week of 5 August 2025
Application Deadline	Wednesday 20 August 2025 at 12:00 CET
Review and Selection	September - November 2025
Eligibility Notification	September 2025
Award Status Notification	November 2025
Subgrant Agreements Signed	December 2025
Publication of Call Awards & Start of the Call 2 Subgrants	January 2026
End of Call 2 Subgrants	June 2027

⁷ Frequently Asked Questions will be updated on an ongoing basis, with a final version posted on this date. Questions related to system registration, application submittal, and technical issues will be answered until the call deadline. Questions related to the content of the call will only be answered and reflected in the Frequently Asked Questions until 5th August 2025.

2 Admissibility and Eligibility

The following section outlines the admissibility and eligibility requirements for a subgrant award. Applicants must meet all the following requirements to move on to the next stage in the process.

- 1.5.1. Applications must be complete, including any required uploaded documents and RMC assessment.
- 1.5.2. Applications must be submitted on time as specified in Section 1.3 Call 2 Timeline.
- 1.5.3. Applications must be in English.
- 1.5.4. Applicants must be regions/communities that are either part of EU Member States (including Outermost Regions)⁸; or Associated Countries¹⁹ that are within [Europe's biogeographical regions](#)^{2,10}.

Restrictive Measures

Note that entities subject to EU restrictive measures (e.g.: sanctions¹¹) under Article 29 of the Treaty on the European Union (TEU) and Article 215 of the Treaty on the Functioning of the EU (TFEU), as well as Article 75 TFEU¹⁰, are ineligible to participate as recipients of subgrants (e.g. financial support to third parties) or subcontractors. Specific conditions exist for: non-government-controlled territories of Ukraine, Russia, Belarus¹² and Hungary¹³.

- 1.5.5. Applicants must also be legal entities defined as:
 - a. Public authorities at Nomenclature of Territorial Units for Statistics (NUTS) 1, 2 and 3 level, and Local Administrative Units (LAU)¹⁴; or
 - b. Bodies governed by public law in compliance with Article 2.4 of the Directive 2014/24/EU¹⁵.
- 1.5.6. Applications must define a clear geographical scope (where possible, framed within the NUTS and LAU systems¹⁶) for the implementation of the P2R frameworks (see Section 3, P2R Frameworks)¹⁷

Examples of potential applicants are Regional Development Agencies, Research Centres, Community Associations.

⁸ Note that, in this second call, all [Outermost Regions](#) are now eligible. Due to data consistency issues critical to evaluation, French Outermost Regions will go through the process as a special “country category”; This implies that “within-country” evaluations will assess all French Outermost Regions among each other; and “country” diversity checks will consider French Outermost Regions as a separate “country” category.

⁹ While Swiss entities are eligible to apply to P2R, they can only be awarded if at the time of award (estimated for December 2025) the [association agreement of Switzerland to Horizon Europe](#) applies.

¹⁰ Following the accession of the UK to the Horizon Europe Programme, UK regions (England, Northern Ireland, Scotland, and Wales) are eligible for funding).

¹¹ https://finance.ec.europa.eu/eu-and-world/sanctions-restrictive-measures/overview-sanctions-and-related-resources_en. See also <https://www.sanctionsmap.eu/#/main>.

¹² Given the illegal invasion of Ukraine by Russia and the involvement of Belarus, there is currently no appropriate context allowing the implementation of the actions foreseen in this programme with legal entities established in Russia, Belarus, or in non-government controlled territories of Ukraine. Therefore, even where such entities are not subject to EU restrictive measures, such legal entities are ineligible to participate as recipients of financial support to third parties (subgrants) or subcontractors.

¹³ Following the Council Implementing Decision (EU) 2022/2506, as of 16th December 2022, no legal commitments (i.e. financial support to third parties/subgrants) can be signed with Hungarian public interest trusts established under Hungarian Act IX of 2021 or any entity they maintain. Affected entities may continue to apply to calls for proposals. However, in case the Council measures are not lifted, such entities are not eligible to participate in any funded role (i.e. recipients of financial support to third parties, subgrants, or subcontractors).

¹⁴ <https://ec.europa.eu/eurostat/web/nuts/national-structures>

¹⁵ <https://www.gov.ie/pdf/?file=https://assets.gov.ie/213256/ffc820d6-6238-4ccd-9294-bd9ce3c878e3.pdf#page=null>

¹⁶ <https://ec.europa.eu/eurostat/web/nuts/national-structures>

¹⁷ Note that this implies that each application should correspond to “one region” – and not multiple regions working in parallel

Consortia applications, also referred to as multi-beneficiary applications, among regions/communities are encouraged and eligible to apply but **must have a single designated Coordinator**. Only those defined under 1.5.5.a and 1.5.5.b may be a consortium coordinator. Private non-profit bodies and Small and Medium Enterprises (SME) following the EU definition by the Commission Recommendation 2003/361/EC and in the SME user guide¹⁸ may be part of a consortium as consortium partners.

Current subgrantees (part of P2R's first cohort) are not eligible to participate in the second call, in order to maximize coverage of the P2R support.

2.1 Consortium Roles:

2.1.1 Consortium Coordinator

The coordinator is the primary contact and represents the application and subgrant beneficiaries. Sole Applicants, also referred to as mono-beneficiary applicants, hold the coordinator role. At a minimum, the coordinator is responsible for:

- a. Submitting a single application, including all required attachments;
- b. The signature of the subgrant agreement (the other consortium members sign a consortium agreement);
- c. Leading the consortium agreement drafting and signature process;
- d. Distributing payments to any consortium partners; and
- e. Managing the delivery of and compliance to the subgrant ensuring high-quality and on-time reporting.

2.1.2 Consortium Partners

Consortium partners are responsible for:

- a. Collectively contributing to a smooth and successful implementation of the subgrant (i.e. implement their part of the action properly, comply with their own obligations under the subgrant and support the coordinator in their obligations); and
- b. Compliance with all the other provisions of the subgrant and all the applicable provisions of EU, international and national law, including general principles, such as fundamental rights, values, and ethical principles.

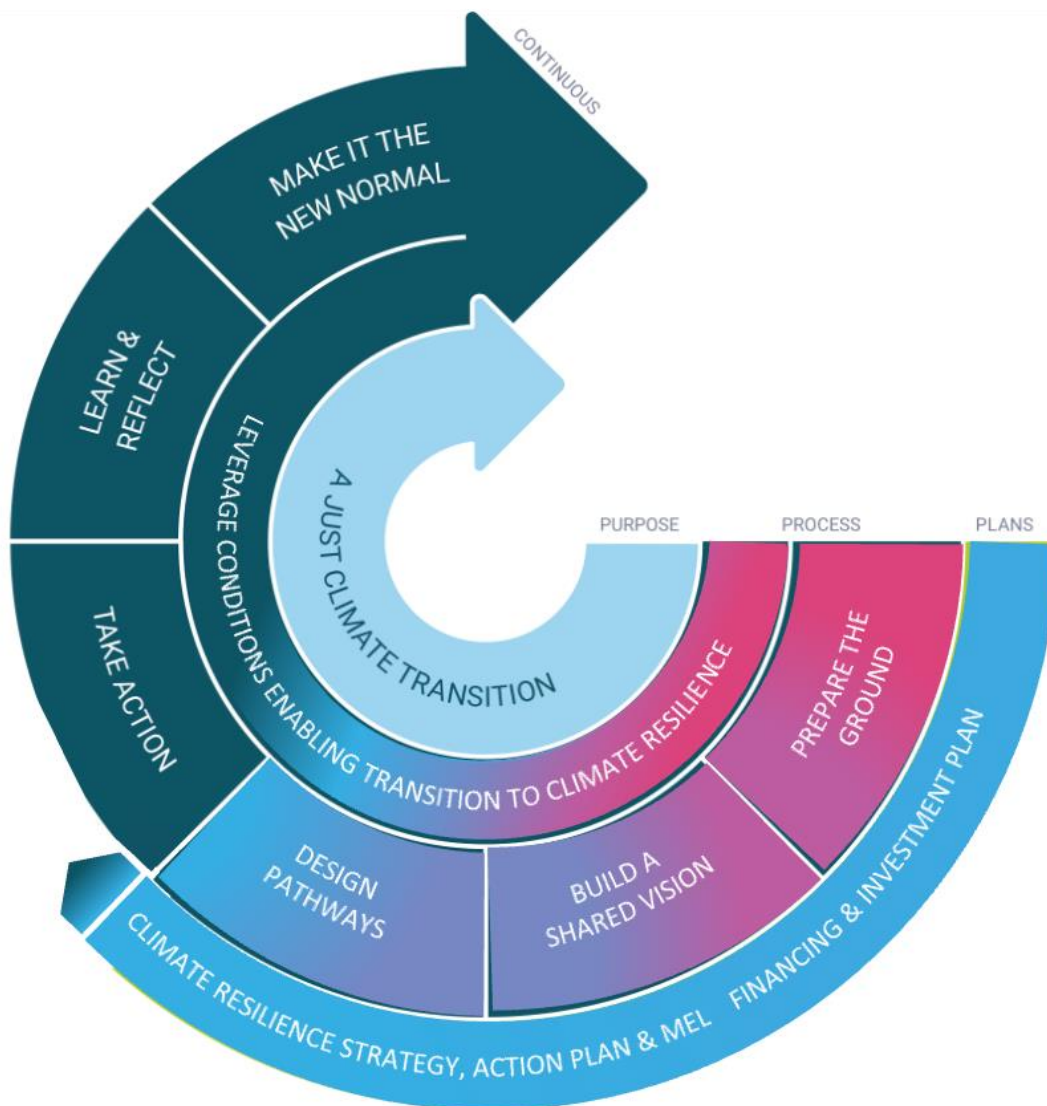
¹⁸https://single-market-economy.ec.europa.eu/smes/sme-definition_en

3 P2R Frameworks

3.1 Regional Resilience Journey (RRJ)

P2R has developed a framework to support regions in their work to adapt and build resilience to climate change, the Regional Resilience Journey (RRJ). The RRJ consists of multiple steps, each containing different expected activities and outcomes, as well as pointing to different methodologies and tools that can be used.

The RRJ is part of a larger framework on transformative climate adaptation, concentrating on the planning phase. The image below places the RRJ within the larger framework.



The RRJ is a systemic approach to accelerating climate resilience, adjustable to different locals' needs and capacities. It is a non-linear, iterative process; each step may be revisited, and the process may be executed in a different order by each region/community. The RRJ is designed for regions/communities of varying maturity and capacity levels allowing them to set more ambitious or realistic goals for each phase according to their specific needs.

The RRJ will provide guidance for subgrantees on how to address the Key Community Systems (KCS) affected by climate change, as well as develop the needed Key Enabling Conditions (KEC) to support their transformative adaptation needs.

The text below presents a brief description of the main steps. The full version, once developed, will be available on [P2R's website](#), alongside further information on KCS and KEC.

3.1.1 Prepare the ground

This first phase of the Regional Resilience Journey is to ensure that you situate your adaptation planning and already ongoing activities within the wider policy, social, environmental, economic and fiscal context for an initial framing of the scope, challenges and opportunities of your regions' journey to climate resilience.

More concretely, this phase is about **preparing the ground** by:

- **Establishing a baseline:** reviewing available knowledge and gaps of climate impacts and existing political commitments, regional policy, plans and strategies currently in place and ongoing activities to address them; and preparing an initial framing of the problem.
- **Understanding the system:** recognising the relevant parts of the affected systems, their interrelationships and the drivers of change; and understanding who are the actors and stakeholders relevant in the climate adaptation context.
- **Assessing risks and capabilities:** Based on the aforementioned points, gaining a clear understanding of the current and future climate risks for your region that would need to be addressed to become climate resilient; and assessing the capabilities of your region needed to manage this transition.

3.1.2 Build a shared vision

A critical step of your region's journey to climate resilience is co-developing a shared vision of your region's future climate resilient state together with stakeholders. This vision will guide your later activities to formulate your long-term Climate Resilient Strategy and Action Plan, and serves as the beacon towards which your region is heading.

This **second phase** is about **building a shared vision** by:

- **Ensuring ownership and commitment:** Developing strategies for meaningful and active engagement of relevant actors in the various tasks and outlining a decision-making process within your respective policy processes and political contexts leading to adoption of the Climate Resilience Strategy, Action Plan, and Investment Plans.
- **Exploring possible climate resilient futures:** Climate resilience can possibly be achieved by a range of different paths. Reflecting about possible different climate resilient futures is about exploring different and potentially transformational ways in which your region could choose to live under the evolving climatic conditions.
- **Co-creating a shared vision:** Building on the preparatory work completed in Phase 1, elaborating a common understanding of an ambitious, transformative, yet possible future for your region, which lays the ground for a cohesive narrative and clear sense of purpose and direction for the transition to climate resilience.

- **Developing a theory of change:** Giving more detail to your vision by reflecting on how change is supposed to happen, and to better understand and agree on the commitments and systemic changes that your region is willing to take to achieve that vision.

3.1.3 Define pathways

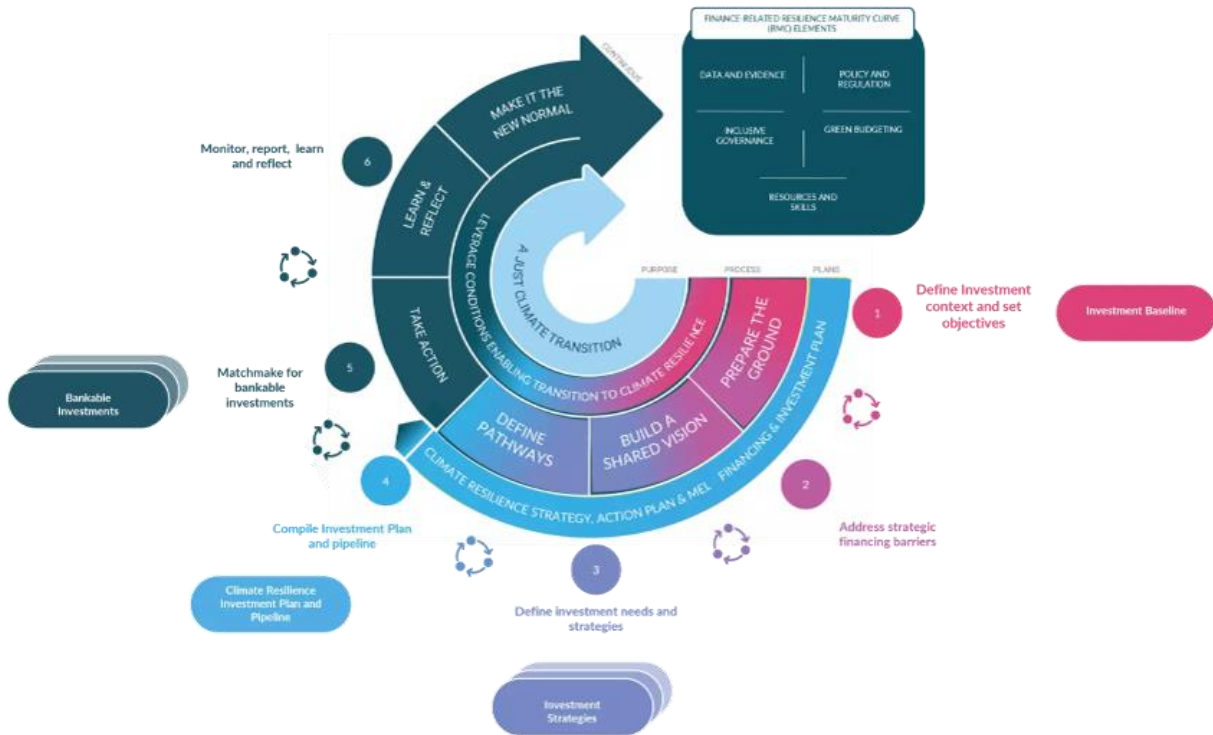
The third phase of the Regional Resilience Journey focuses on turning your vision into actionable climate adaptation pathways. Climate Resilient Strategies to both adapt to climate change and transition towards resilience bring together interventions across multiple levers of change in a coherent portfolio of actions, outlining how each intervention contributes towards the desired vision. These strategies rely upon structured and evidence-based decision-making—supported by monitoring—that ensures efforts align with the overarching shared vision and that their activities, outputs and outcomes can be prioritised and sequenced over time.

Designing these pathways involves:

- **Identifying and assessing options:** Exploring a wide range of potential adaptation options to reduce risks and achieve the vision, while evaluating their applicability, performance against risks, overall benefits, adverse effects, trade-offs, and synergies.
- **Designing a portfolio of interventions:** Formulating adaptation pathways to realise your region's shared vision by sequencing prioritised options over time, identifying key decision points, and selecting a diverse array of innovations—from technical solutions to institutional, social, and behavioural changes—to create comprehensive climate resilience strategies.
- **Preparing for implementation:** Once the Climate Resilience Strategy is in place, a detailed Action Plan must be developed to guide implementation over the next three to five years, alongside a Monitoring, Evaluation, and Learning Plan to track progress, encourage learning, and allow for adjustment.

3.2 The Adaptation Investment Cycle (AIC)

P2R's Regional Resilience Journey is supported by an Adaptation Investment Cycle (AIC). This is shown below:



Following the cycle helps a region translate the Climate Resilience Strategy and Action Plan into a pipeline of bankable projects. This ensures regions have a clear approach to funding and financing the strategy and its actions. The cycle is followed at the same time as the RRJ, to help align adaptation actions and the practicalities of financing. A full description of the tasks in the cycle is available on the [P2R website](#).

3.3 P2R Support

P2R offers a range of support services and technical assistance with different levels of engagement expected from subgrantees, as outlined in the following.

3.3.1 P2R’s capacity building programme

P2R offers a comprehensive capacity building programme designed to directly support subgrantees. Subgrantees are required to engage with the resources provided and actively participate in in-person and online training sessions to validate P2R’s content. Feedback collected via the required reporting is described in the Section 10 Awarded Subgrant Requirements.

The main objective of this capacity building programme is to equip subgrantees with the necessary tools and knowledge to effectively implement the RRJ and AIC methodologies described above. Content will include:

- **Group training sessions:** Practical, hands-on training designed to build the technical capabilities needed to develop climate resilience strategies, action plans, and investment plans. These sessions will focus on all aspects of the Regional Resilience Journey and the Adaptation Investment Cycle, using live case studies to provide real-world insights.
- **Innovation Practice Groups:** Thematic working groups bringing together regional experts, citizen groups, and practitioners to explore key systems in need of adaptation. These groups will facilitate collaboration, foster communities of practice, and support the exchange of best practices and successful adaptation strategies.

- **Peer-to-peer mentoring:** A structured, peer-led mentoring initiative enabling subgrantees to learn from each other, exchange experiences, and build long-term connections. This programme will continue beyond the structured training, promoting a self-organised and sustainable knowledge-sharing network.

P2R will provide a series of resources including structured guidance on the RRJ and the AIC to support subgrantees in effectively navigating their climate resilience planning and implementation processes. In addition, the *Climate Resilience Toolbox* will offer access to a curated collection of tools, guidance, studies, and best practices in climate adaptation.

3.3.2 P2R's direct 1-1 support

P2R will provide a limited number of individual subgrantees with additional one-on-one support in following the Regional Resilience Journey and Adaptation Investment Cycle, based on their maturity level, and the potential to add wider benefit to the entire portfolio of regions. This engagement is led by Climate KIC, Deltares and Athens University of Economics and Business and is optional, delivered only with the subgrantee's consent. However, if a subgrantee accepts to receive one-to-one support provision, but demonstrates no engagement, Pathways2Resilience will reserve the right to withdraw the support and offer it to a subgrantee in a position to engage.

The objectives of these engagements are twofold: 1. To accelerate the subgrantee's resilience journey and 2. To increase the quality of the capacity building program through closer user testing and developing demonstration case studies.

These include monthly sessions on the RRJ and AIC tasks to facilitate learning and knowledge exchange among subgrantees. In addition, AUEB and Paul Watkiss Associates have a pooled pot of support which can be used for direct work on Adaptation Investment Cycle tasks. P2R will organize workshops, webinars, and study visits to promote collaboration and knowledge sharing. Subgrantees will be able to learn from each other's experiences and make improvements.

Expected commitment from the subgrantees accepting the one-to-one support provision:

- Document their enhanced learning journey.
- Share learnings and insights with other regions through the training slots allocated to that effect.
- Actively provide feedback to improve the Regional Resilience Journey and the Adaptation Investment Cycle frameworks and the associated resources (technical guidance, capacity building programme, etc.) by being part of a formal P2R regions panel tasked with an active review of P2R materials.

3.3.3 Other P2R support initiatives

Additionally, P2R will organize additional support initiatives that are not directly targeted at subgrantees and extend beyond the purpose of this call. Subgrantees may be invited to participate or contribute but are not required to do so.

P2R's subgrantees may be invited to co-develop content for the Innovation Practice Groups or Adaptation Finance Innovation Lab. Further information about these initiatives may be found on [P2R's website](#).

3.3.4 Communication

Email will be used to keep subgrantees informed of the available support activities. Subgrantees will be required to submit progress reports, which will also inform the deployment of P2R's services.

Training sessions are delivered via Zoom, supported by collaborative tools such as Miro. The materials and calendar are hosted on a Trello board.

4 Scope

The ideal P2R subgrantee is described in this section.

P2R subgrantee regions/communities will demonstrate high vulnerability to climate impacts and have limited resources and/or low adaptive capacity to address them. Subgrantees will have a deep awareness of their local climate risks and internal capacity needs.

P2R subgrantees will demonstrate a strong commitment to the EU Mission on Adaptation to Climate Change⁴, either as mission charter signatories and/or by engagement in one or more Mission Adaptation related HE projects. They will also show a strong political will to embark on a transformative resilience journey and show a good degree of influence over relevant policies and programmes to ensure a whole-of-government approach¹⁹. Subgrantees will be interested in exploring P2R's approach of systems innovation, and to work across silos both within and beyond the regional/local public authorities. This will include involving a wider array of public departments, such as finance colleagues, and those working on broader regional development and/or the Key Community Systems (e.g. health or infrastructure).

Subgrantees will be committed to improving their resilience maturity, increasing their ambition for their future or existing transformative adaptation planning work through the RRJ methodology and increasing their literacy and access to innovative adaptation finance.

Subgrantees will mobilise the required internal and/or external competences to achieve the Mission's and P2R's objectives towards transformative adaptation planning. Subgrantees will seek to develop their capacities to develop effective planning processes and outputs; execute institutional multi-stakeholder coordination; develop suitable monitoring, evaluation and learning tools; interpret climate information to evaluate local KCS; determine gaps in the KEC and develop a capacity building plan; identify financial needs and develop an Investment Plan to mobilize the resources needed.

Subgrantees will map existing adaptation and mitigation strategies, programmes, and projects, in addition to understanding the contribution of local and national adaptation plans (NAPs) and strategies towards regional visions.

Subgrantees will develop mechanisms to meaningfully involve and engage citizens, businesses, and wider stakeholders in the transformation to climate resilience in the regions/communities participating in the EU Mission on Adaptation to Climate Change⁴. Regions will include the key economic sectors in their region, to promote competitiveness through climate-proof resilience.

A region's engagement and participation strategy will ensure a breadth of stakeholders, across public and private sectors, as well as civil society, in their planned engagement approaches. As a result, they will collect, incorporate, and centre diverse voices to co-develop their transformative adaptation strategy.

¹⁹https://commission.europa.eu/strategy-and-policy/sustainable-development-goals/eu-whole-government-approach_en

Subgrantees will integrate climate justice and Just Resilience principles into their transformative adaptation and mitigation strategies. They will conduct a comprehensive assessment of the various climate justice dimensions, including but not limited to ethics, sustainability practices, gender disparities, migration patterns, the needs of marginalised communities, economic inequalities, physical accessibility challenges, open digital access, disparities in environmental impacts distribution, and accountability issues, such as environmental debt and reparations. This should focus both on the underlying difference in distribution of climate risk, but also the effects of planned adaptations. Consequently, subgrantees will demonstrate how existing and future measures towards climate justice are integrated within the overall transformative adaptation and mitigation strategy.

Subgrantees will establish knowledge sharing mechanisms beyond their target region and will look to increase cooperation with other public authorities across the continent. This includes participating, organizing and contributing to conferences, communities of practice of the Mission and other networks for state-of-the-art transformative adaptation know-how diffusion.

Finally, subgrantees will have thoughtful resource allocation across activity types, KCS, and other stakeholders.

4.1 Deliverables

Subgrantees will be expected to report their actions against the steps described in the RRJ and the Adaptation Investment Cycle (linked to payment instalments 2 and 3). Particularly, they will have to submit the following deliverables:

- First reporting period (due on the 10th month of the subgrant):
 - Baseline report
- Second reporting period (due once the 18 months of the subgrant are completed):
 - Climate Resilience Strategy
 - Climate Resilience Action Plan
 - Climate Resilience Investment Plan

by the end of the program and before the final payment from the consortium side.

Detailed information and guidance to develop each deliverable will be provided within the RRJ capacity building.

Where regions already have a Climate Resilience or Adaptation Strategy and/or Investment Plan, subgrantees will clarify how the funding is used to extend, refresh or update them in line with the transformational ambitions of the Adaptation Mission and Pathways2Resilience.

4.2 Outcomes

The expected results of P2R subgrants are:

- Mobilising regional interest and progressively elevating the ambition and capability of regions;
- Development of climate resilience pathways and connected innovation portfolios with the support of the RRJ framework (and supporting services);
- Development of an investment plan using the AIC framework to support the implementation of the climate resilience strategy;
- Activating engagement of citizens and diverse stakeholders in the co-creation of the pathways;
- Increasing knowledge on transformative adaptation innovation across KCS and KEC;
- Boosting literacy and access to innovative adaptation finance; and

- Baselining and monitoring regional resilience capabilities through the Resilience Maturity Curve (RMC).

4.3 Eligible Activities

Subgrants may involve a combination of activities, including construction of RRJs and innovation portfolios, development of Investment Plans, capacity building, stakeholder engagement, project management, communication, and dissemination, including reporting.

Eligible subgrant activities will follow the provision for activities under Horizon Europe (HE) costs categories, and will be organized along the following:

- Activities to develop regional pathways, plans and innovation portfolios towards climate resilience building on existing assessments of trends and projections of future climate change risks.
- Activities to develop Investment Plans to translate those pathways, plans and portfolios into pipelines of bankable projects.
- Activities supporting the process of developing the pathways as specified in the scope topic text including relevant stakeholder engagement and capacity building.
- Activities related to communication, dissemination and exploitation and project management activities.

Specifically, these activities may include:

1. Deliverable development (baseline assessment, climate resilience strategy, action plan, investment plan), including necessary research (e.g.: data and information collation, development and analysis)
2. Stakeholder engagement and involvement;
3. Capacity building, internal and external training related to resilience;
4. Communication, dissemination, and exploitation;
5. Exchanges with other subgrantees and other regions;
6. Monitoring and evaluation; and
7. Project management and local coordination.

Activities related to demonstration and deployment of climate adaptation solutions are not eligible for funding under this call.

5 Eligible Subgrant Costs

For subgrant budgets to be compliant under P2R, the EU Funding Programmes 2021-2027 must be followed. The P2R subgrants may cover direct costs: personnel; travel and subsistence; equipment; other goods and services; and subcontracting, following applicable HE rules²⁰. Please refer to the HE rules to determine eligible costs²¹.

Specific restriction on subcontracting: total costs allocated to subcontracting are limited to 25% of the total subgrant budget.

Note that, before confirming the Award of the grant, applicants may be requested to adjust the budget in order to ensure compliance.

²⁰ Note that small budget deviations will be possible during the subgrant phase, upon approval from the subgrant management team.

²¹ <https://ec.europa.eu/info/funding-tenders/opportunities/portal/screen/how-to-participate/reference-documents?programmePeriod=2021-2027&frameworkProgramme=43108390>

5.1 Indirect Costs

Per HE rules, indirect costs are based on a flat rate of 25 percent, calculated on the direct costs. Indirect costs cannot be calculated on subcontracting costs.

6 Application Submission

6.1 Submission Format

Go to <https://www.pathways2resilience.eu/second-open-call> for information on how to register and apply. Please note that submissions outside of the system will not be accepted.

6.2 Application Language

Applications must be in English. Exceptions may be made for supporting documents, which may be written in one of the official languages spoken in the region/community for which the application is being submitted²².

6.3 Deadline

Applications must be submitted by the deadline, as specified in the Section 1.3 Call 2 Timeline. Late applications will not be accepted.

6.4 Data

The P2R call is implemented by the P2R consortium coordinator, Climate KIC, which means that application data will be received and stored by Climate KIC. As such, all registrants are required to accept Climate KIC's General Terms and Conditions²³, which also includes the Privacy Policy, Acceptable Use Policy, and Cookie Policy. Registrants warrant and represent that they have authority to agree and accept these on behalf of their named organisation.

The public sharing of data may include, but is not limited to, P2R making the outcome of this call available on its website in relation to statistics on number of applications per country; per topic; budget; and funding. Information on each activity selected for funding, including data on each applicant and abstracts of the activity applications, may also be made available for publication purposes.

Personal data provided may be processed and certain sensitive data elements may be visible to P2R consortium partners. The applicant warrants and represents that in providing personal data in connection with the application, the data subjects have consented to the provision of this personal data and the processing of it by P2R in the manner indicated in accordance with Climate KIC's Privacy Policy, and that the organisation provides the personal data in accordance with applicable law.

Applicants shall comply with applicable data protection legislation, including, but not limited to the General Data Protection Regulation (GDPR) (EU) 2016/679 and any national implementing laws, regulations, and secondary legislation, in each case as amended, supplemented, or replaced from time to time.

²²P2R reserves the right to request a translation at any time. P2R also reserves the right not to pass additional information to evaluators if not provided in English or supported by a translation.

²³ Climate KIC, as the coordinator of the P2R project, is hosting the call on its call platform.

6.5 Confidentiality

Applications will be treated confidentially, and documents received in accordance with Climate KIC’s Privacy Policy²⁴, which has been adopted by the P2R project, or as otherwise indicated throughout the application form (i.e., city name, project title, summary description).

P2R consortium members, evaluators, and decision makers are prohibited from discussing or disclosing non-publicly available information or contributing to the development of applications. Violation of confidentiality may result in removal from the consortium and removal of the applicant’s application.

7 Review Process

All applications will be reviewed fairly and transparently. To protect against conflicts of interest, all evaluators and decision makers will abide by the Climate KIC’s Conflicts of Interest & Gifts Policy and Anti-Fraud, Corruption & Bribery Policy ^{24, 25}. Violation of the policies may result in removal from the P2R consortium and removal of the applicant’s application.

A maximum of 61 applications will be awarded in this call.

The review process is summarised in the following table:

Step	Short description	Outcome
Admissibility and Eligibility Review	Administrative eligibility check	Only eligible applications pass
Pre-Screening	Quantitative prioritization, based on vulnerability, diversity of country and population size	120 maximum
Evaluation	External reviewers score applications	Minimum score threshold of 55/100
Strategic Selection	P2R board composes diverse portfolio	61 maximum

7.1 Admissibility and Eligibility Review

Each application will be reviewed on whether it meets the admissibility and eligibility criteria, as outlined in the Section 0

²⁴Climate KIC, as the coordinator of the project, will follow its policies regarding privacy, confidentiality, conflict of interest and gifts, anti-fraud, corruption, and bribery for the P2R project.

²⁵<https://www.climate-kic.org/policies/privacy-policy/>

Admissibility and Eligibility. Applications must meet all requirements to move on to the next stage.

7.1.1 Pre-Screening

A pre-screening process will take place **only** if the number of admissible and eligible applications is above 120.

The goal is to limit the number of applicants progressing to the evaluation phase to 120.

The pre-screening process consists of the following steps:

- 1) Assigning number of slots per country
 - a. According to target number per country
 - b. Distributed equally, prioritized by vulnerability
- 2) Assigning applicants to country slots
 - a. Distributed equally across population size levels, prioritizing higher levels
 - b. Prioritizing vulnerability

Step 1a) Target number per country

Country slots are first allocated according to **twice the target number per country** (see Annex 1 : Target number of subgrantees per country).

Step 1b) Country's Climate Change Risk Index Assessment

The remaining slots are distributed equally across countries, prioritizing by vulnerability, as described in the next paragraph.

In this step, the Joint Research Centre's (JRC) INFORM Climate Change Risk Index will be employed to assess a country's impacts of climate change on the future risk of humanitarian crises and disasters (using the specific parameters: 2050, RCP 8.5, Constant Population)^{26,27}. Following this assessment, the maximum number of slots in the pool of 120 applications will be determined for each participating country. Priority in pool construction will be given to countries with the highest vulnerability, indicated by the highest INFORM Climate Change Risk Index values.

Example: Country X, with a higher vulnerability, would be allocated a larger number of slots in the pool compared to Country Y.

Step 2a): Applicant's Population size assessment

Following the previous step, each country slot must be assigned to specific applicants.

This allocation will strive for a balanced distribution based on three population size levels²⁸:

- A. Over 3 million inhabitants: Slots will be allocated to regions with populations exceeding 3 million.
- B. 3 million to 800,000 inhabitants: Slots will be distributed to regions within this population range.
- C. Less than 800,000 inhabitants: Regions with populations less than 800,000 will receive their allocated slots.

The goal is that, per country, there is a balanced mix of population size levels across applicants. Where needed, priority is given to higher population levels.

²⁶<https://drmhc.jrc.ec.europa.eu/inform-index/INFORM-Climate-Change/INFORM-Climate-Change-Tool>

²⁷Countries where the data is not available (e.g.: Faroe Islands) will have their ranking assumed to be equivalent to the mean of the closest territories.

²⁸Population data will be sourced from national census data and/or statistical offices where available. Estimates will be used where necessary.

Step 2b): Applicant's vulnerability assessment

In the event of multiple regions with similar population size levels within the same country, priority is accorded to applications demonstrating high vulnerability and low adaptive capacity to climate change impacts. This assessment is objectively conducted using the Vulnerability Index produced by the JRC Disaster Risk Management Knowledge Centre (DRMKC) at the relevant level for comparison (NUTS2 or NUTS3)²⁹.

NUTS1 values will be extrapolated by the average of the underlying NUTS2 regions, accessible through the Risk Data Hub. In cases where data is unavailable within the country, the corresponding national mean vulnerability value at that level will be utilized. If tie scores persist, the RMC self-assessment, as described in the Section 7.1.2 Resilience Maturity Curve (RMC), will be used.

Example 1:

Country A, with three available slots and five applications (3 A, 1 B, 1 C), will be allocated one slot to each population size category: A, B, and C to ensure the population size diversity criteria.

Example 2:

Country A, with four available slots and five applications (3 A, 1 B, 1 C), will be allocated one slot to each population size category by default: A, B, and C, ensuring the fulfilment of population size diversity criteria. Out of the three A-type regions, the two with the highest vulnerability (as determined by the Vulnerability Index) will be given priority into the two available slots. In instances of ties, the RMC self-assessment score for low adaptive capacity will be used as a deciding factor.

Example 3:

Country A, with four available slots and five applications (2 A, 1 B, 2 C), will be allocated one slot to each population size category: A, B, and C, ensuring compliance with the population size diversity criteria. An additional slot will be assigned to the A region type, fulfilling the condition of prioritizing regions with the highest population.

7.1.2 Resilience Maturity Curve (RMC)

The RMC is a novel monitoring and evaluation tool designed to assess the maturity of regions/communities. For the purposes of this open call, the RMC will serve to assess and monitor regions/communities' readiness for transformative climate change adaptation, resulting in a resilience capacity score. It combines evaluation of four resilience capacities: the capacity to anticipate, adapt, absorb and transform. It recognises that regions and communities may have varying levels of resilience maturity. The overall resilience of a region is enhanced by acquiring these capacities. This can be achieved through a range of interventions that address both immediate and long-term regional adaptation needs.

The Resilience Maturity Curve is structured around a self-assessment questionnaire that aligns with the steps of the Regional Resilience Journey (RRJ), including the key enabling conditions and the Adaptation Investment Cycle. Your resilience capacity score from the Resilience Maturity Curve self-assessment is crucial for guiding your climate resilience pathways and innovation strategies, as it provides a clear picture of your current resilience maturity level.

The RMC resilience capacity is assessed on an ordinal scale from 0 to 10, where 0 represents "no capacities" and 10 represents "excellent capacities". A "high RMC score" indicates a high resilience capacity.

²⁹See <https://drmkc.jrc.ec.europa.eu/risk-data-hub#/dashboardvulnerability>.

Where prioritization is required, the selection process will favor applicants with lower resilience capacity, demonstrated by a low RMC score.

7.2 Evaluation

Not more than 120 applicants will proceed to the evaluation stage.

Applications that proceed to evaluation will be evaluated by at least three independent experts against the published evaluation criteria in Section 7.4 Instructions and Admissibility/Eligibility, Evaluation, and Selection Criteria.

The following will be used to score the evaluation criteria.

Score	Description
0	Application fails to address the criteria or cannot be assessed due to missing or incomplete information.
1	Poor. The criteria are inadequately addressed and/or there are serious weaknesses.
2	Fair. The application broadly addresses the criteria, but there are significant weaknesses.
3	Good. The application addresses the criteria well, but several shortcomings are present.
4	Very good. The application addresses the criteria very well, but a small number of shortcomings are present.
5	Excellent. The application successfully addresses all aspects of the criteria. Any shortcomings are minor.

Applications in this phase that reach a threshold of 55 total points (out of 100) will proceed to Strategic Selection³⁰.

7.3 Strategic Selection

The goal of Strategic Selection is to obtain the highest performing portfolio, consisting of 61 tentative subgrantees.

This is additional to the 39 regions already selected in the previous call.

This stage involves a contextual assessment that considers and prioritises a portfolio of regions/communities based on adaptation and mitigation priorities and areas of research and innovation in the mission (assessed via KCS and KEC prioritization); geographical coverage; climate risk type; impact; and diversity. The goal of this stage is to obtain a representative portfolio that reflects the diversity of eligible regions/communities.

As such, individual applications will not be scored and/or ranked during Strategic Selection.

Note that diversity considerations will be taken into account regarding the full P2R portfolio (call 1 + call 2).

A Strategic Selection Committee comprised of representatives from the P2R Consortium will use the following criteria to assess and determine the subgrant portfolio:

1. **Countries:** The portfolio will include a distribution of subgrantees across countries according to the target (see Annex 1 : Target number of subgrantees per country).

³⁰P2R reserves the right to adjust the threshold depending on the overall quality and number of applications received.

2. *Geographic coverage*: The portfolio will maximise geographic coverage as possible (avoiding overlapping subgrantees)
3. *Bioregions*: The portfolio will contain representation of the maximum number of EU bioregions³¹.
4. *Climate risk type*: The portfolio will have representation of as many climate risks^{32,33} (i.e., heat stress, coastal flooding, river flooding, flash flooding, wildfires, droughts) as possible.
5. *Scale*: The portfolio will have representation of as many different region/community scales (e.g., population thresholds of over 3 million; 3 million to 800,000; and less than 800,000) as possible.
6. *Typology*: The portfolio will have representation of the maximum number of regional typologies (i.e., coastal; mountain; island; rural-urban remoteness³⁴; border). Typology data and rules will be obtained from NUTS2021 statistical data³⁵ and extrapolated where necessary (e.g., NUTS1 and NUTS2 regions will be averaged across NUTS3 values).
7. *KCS and KEC prioritization*: The portfolio will aim for a balanced prioritization of both KCS (water management; ecosystems and nature-based solutions; climate proofing of critical public infrastructure; land use and food systems; health and human wellbeing; local economic systems) and KEC (knowledge and data; governance and engagement; finances and resources; capabilities and skills; behavioural change; experimentation and reflective adjustment), as measured by the responses in the application form.
8. *RMC scores*: The portfolio will aim for a balanced maturity level across different dimensions of the RMC, corresponding to maturity in different RRJ or AIC tasks (e.g.: the portfolio will strive to include applicants with both high and low scores for specific tasks such as co-visioning or finance modelling). This does not consider the overall RMC score, just diversity in the individual RMC components of the score.

In the event of all other factors being equal when deciding which applications to include in the portfolio, the following will take place:

- 1) The Strategic Selection Committee will be invited to evaluate individual applications with a score from 1 to 10. These will be assessed on the research/innovation potential to contribute to the continuous improvement of P2R's frameworks³⁶.
- 2) Applicants will then be prioritized based on the average of the Strategic Selection Committee AND the external evaluation score. Priority will be given to those with the highest combined score.
- 3) Where ties persist, priority will be given to those with the highest RMC self-assessment score (0-10).

Example:

- *After applying diversity criteria (Climate Risk Type, Scale, etc), there are 2 valid applicants for country X and only one slot remaining. The Strategic Selection Committee will then evaluate both of them.*
 - *In the previous step, the external evaluation, Applicant A had scored 70 and Applicant B had scored 75.*

³¹As defined here:

https://portal.discomap.eea.europa.eu/arcgis/home/webmap/viewer.html?url=https://bio.discomap.eea.europa.eu/arcgis/rest/services/BioRegions/BiogeographicalRegions_WM/MapServer&source=sd

³²See <https://gis-portal.espon.eu/arcgis/apps/storymaps/stories/691e08159ed943ba8d36468e5df9e141>

³³In cases where data is not available, the applicant is considered neutral within this criterion, gaining neither advantage or disadvantage.

³⁴Sub-typologies of urban-rural remoteness: predominantly urban; intermediate, close to a city; intermediate, remote; predominantly rural, close to a city; predominantly rural, remote

³⁵<https://ec.europa.eu/eurostat/documents/345175/629341/NUTS2021.xlsx>

³⁶ See P2R's objective of developing an innovative systemic approach to adaptation here: <https://cordis.europa.eu/project/id/101093942>

- *The Strategic Selection Committee, however, scored overwhelmingly for Applicant A (average of 90) rather than Applicant B (average of 75) based on how it fits with P2R's research objectives.*
- *Applicant A's final score, for this purpose, became 82.5 and Applicant B remained at 75 – so Applicant A is awarded this slot.*

7.4 Instructions and Admissibility/Eligibility, Evaluation, and Selection Criteria

The following will be used to determine admissibility/eligibility, evaluation, and selection.

Section	Subsection	Instruction to Applicants	How Evaluated	Score/Weight
Admissibility and Eligibility		<p>Go to https://www.pathways2resilience.eu/second-open-call for information on how to register and apply. Complete the entire application, in English and submit on-time.</p> <p>The RMC Self-Assessment measures regional resilience by assessing its capacity to adapt to a changing climate, anticipate and absorb impacts and transform itself to stop its limits being exceeded. When completing the RMC Self-Assessment, respond to as many questions as possible.</p>	<ol style="list-style-type: none"> 1. Was the application complete and submitted on-time? 2. Were the application responses in English? 3. Is applicant a region/community of EU Member States or Associated Countries, within Europe's biogeographical regions as defined in the section 0 4. Admissibility and Eligibility? 5. Is applicant a public authority at NUTS or LAU or a body governed by public law as defined in 0 6. Admissibility and Eligibility? 7. Is applicant a local/regional/national organisation? 	Pass/Fail

Section	Subsection	Instruction to Applicants	How Evaluated	Score/Weight
			<p>8. If applicant is not a local/regional/national organisation, is there a signed commitment letter from the specific region?</p> <p>9. Does the application have a clear and valid geographical scope for the P2R frameworks to be applied to?</p> <p>10. Is the proposed budget in line with eligible costs and the subcontracting limit?</p>	
	Pre-Screening	Applicant will have already provided the required data for the RMC as part of the application.	RMC score derived from self-assessment; country, and population scale level.	
Evaluation	1. Alignment	1.1. In the online call submission platform, describe the region/community's alignment with the EU Mission Adaptation to Climate Change ⁴ and P2R's outcomes (see the Section 4.2 Outcomes). Describe how the region will aim at leveraging different policies and programmes in line with a whole-of-government approach.	1.1. How well did the applicant demonstrate the alignment with the Mission (e.g., being a mission charter signatory, part of other Mission projects, demonstrating existing aligned policies and initiatives, etc.) and the whole-of-government approach?	15
	2. Scope	1.2. In the online call submission platform, describe how the region/community will use the P2R financial and non-financial support. Define which (sub)systems and/or sectors the region/community will be addressed by the P2R-supported development of a regional climate resilience strategy, action plan and investment plan.	1.2. How well did the applicant demonstrate the scope's fit with P2R's transformative systemic approach to adaptation, as well as its ambition and impact in the region and beyond.	15
	3. Stakeholder Engagement	1.3. In the online call submission platform, describe the region/community's:	1.3. How well did the applicant demonstrate the reach and depth of stakeholder	15

Section	Subsection	Instruction to Applicants	How Evaluated	Score/Weight
		<p>a) Engaged stakeholder typology (e.g., public, private, civil society).</p> <p>b) Planned stakeholder engagement approach.</p>	engagement planned activities, ideally being highly participatory and involving the least privileged/most affected by adaptation?	
	4. Justice	1.4. In the online call submission platform, describe the region/community's approach to the various dimensions of climate justice, including but not limited to ethics, sustainability practices, gender, migration, marginalised groups, economic inequality, physical accessibility, digital open access, unevenly distributed environmental impacts, and accountability, including environmental debt and reparations.	1.4. How well did the applicant demonstrate awareness, capacity, and commitment to tackle multiple climate justice dimensions?	10
	5. Need for Support	1.5. In the online call submission platform, describe the region/community's vulnerability, limited resources, and/or low adaptive capacity to climate impacts.	1.5. How well did the applicant demonstrate local awareness of vulnerability and internal capacity needs? Is it coherent with the self-assessed priorities and gaps identified in the RMC?	10
	6. Actionability	1.6. In the online call submission platform, describe how the region/community is ready to benefit from P2R support to increase long-term institutional capacity (e.g.: increasing staff's climate resilience know-how).	1.6. How well did the applicant demonstrate that P2R support will lead to positive outcomes towards climate resilience, as well as long-term learning and capacity building within the region/community?	10
	7. Knowledge Sharing	1.7. In the online call submission platform, describe the region/community's planned knowledge sharing activities (e.g.: participating in expert conferences, producing written content, organizing inter-regional working groups or communities of practice) beyond the target region/community.	1.7. How well did the applicant demonstrate the reach and depth of planned knowledge sharing activities, both participating, organizing and contributing?	10

Section	Subsection	Instruction to Applicants	How Evaluated	Score/Weight
	8. Resources	<p>1.8. In the online call submission platform:</p> <ul style="list-style-type: none"> a) Provide a budget, estimating budget usage across any consortium partners, activity type (e.g., training, engagement, awareness raising) and Cost Category for all applicant entities. b) Describe the region/community's resources will be put in place to execute and benefit from the P2R support. Describe how the subgrant budget will be used to mobilise further resources to support delivery of the Strategy. 	<p>1.8. How well did the applicant's budget match the resource mobilization plan and the rest of the application?</p> <p>1.9. Did the applicant ensure to allocate enough budget to execute and benefit from the P2R support? (deliverables and training participation)</p> <p>1.10. Does the applicant have a clear plan to mobilise additional resources as part of its strategy development?</p>	15
Evaluation Stage Total Points				100
Strategic Selection	Diversity considerations for countries; bioregions; climate risk type; impact; typology; KCS and KEC prioritization	<p>In the call submission platform, determine the priority level for each of:</p> <ul style="list-style-type: none"> a) KCS (water management; ecosystems and nature-based solutions; climate proofing of critical public infrastructure; land use and food systems; health and human wellbeing; local economic systems) b) KEC (knowledge and data; governance and engagement; finances and resources; capabilities and skills; behavioural change; experimentation and reflective adjustment) <p>Applicant will have already provided all the other necessary information in the application that will be used in this stage of the process.</p>	Diversity considerations. Ties are resolved through the evaluation score from Evaluation; and if still necessary, the RMC score.	

8 Notification

The notification dates are listed in the Section 1.3 Call 2 Timeline.

8.1 Admissibility/Eligibility

Applicants who do not meet the admissibility and/or eligibility criteria will receive a notification via email at the email address provided to P2R during the application submission.

8.2 Award/Unsuccessful Application

Successful and unsuccessful applicants will receive a notification, via email at the email address provided to P2R during the application submission.

Awards will be conditional upon approval, contingent on the completion of a due diligence review process.

If successful applicants do not sign the subgrantee agreement within 1 month of notification and without justification, P2R reserves the right to withdraw the award.

9 Complaints

9.1 Who May Submit Complaints

Complaints may be submitted by unsuccessful applicants.

9.2 When Should a Complaint be Made

Complaints must be submitted within five business days from the date of the notification.

9.3 What Should be in a Complaint

A complaint must be submitted in writing and must specify the detail and the grounds asserted for the complaint regarding a **law, rule, procedure, or competitive process provision**. The complaint must contain facts or evidence sufficient to investigate and determine the validity of the complaint.

When possible, the complaint should be in English. When submitting a complaint in English poses a significant barrier to the applicant, it may be submitted in another official EU language. When a complaint is submitted in another language, the deadlines to respond and investigate may be extended to properly translate the complaint.

9.4 Where to Send a Complaint

The complaint must be sent to: pathways2resilience@climate-kic.org.

9.5 What Happens When a Complaint is Received

A written acknowledgement of the complaint will be sent upon receipt. If the complaint is received within the five business days, P2R will have fifteen

This document covers applications for subgrant agreement funding under Horizon Europe (HE), grant number: 101093942.

business days to provide a written response. Additional time to investigate and conclude complaints will be granted in accordance with the level of complexity and availability of information before sending a decision letter.

10 Awarded Subgrant Requirements

Please see the draft [Subgrantee Agreement template](#) for details on the terms and conditions that subgrantees will agree to upon successful award. Please note that several items are non-negotiable, including, but not limited to: Conflict of Interest; Confidentiality and Security; Ethics; Visibility; Specific Rules for Carrying Out Action; Information; Record Keeping and Audits and Investigations.

10.1 Dissemination and Intellectual Property

As a general principle, P2R follows the requirements the General Data Protection Regulation (GDPR). As such, the management of knowledge and data should be “as open as possible and as closed as necessary,” “open” to foster reusability and to accelerate research, but at the same time should be “closed” to safeguard privacy and intellectual property. Therefore, our approach is open source by default. No foreground result, which can refer to data, concept, information, etc. generated via the implementation of the pilot activities, is in principle expected to be patented or subject to other protection measures.

Background (meaning know-how or information that is held by the subgrantees before they accede to any subsequent subgrant, and that is needed to implement the action or exploit results) can be protected when contracting with Climate KIC.

11 Community of Practice

Subgrantees awarded through this call are encouraged to establish operational links and collaboration with MIP4Adapt, the Mission Implementation Platform and its Community of Practice³⁷.

12 Climate KIC Membership

Subgrantees are encouraged to join the Climate KIC community platform. Climate KIC is a Knowledge and Innovation Community (KIC), working to accelerate the transition to a zero carbon, climate-resilient society. The Community consists of organisations and individuals who benefit from connecting and learning from each other, innovating and orchestrating transformation together, seeking funding together and influencing key climate and innovation policies. Find more information [here](#).

13 Glossary of Terms

This glossary should be complemented with the updated glossary on the P2R website.

Acronym/Term	Description
Applicant	<p>For the purposes of this call, applicant is a region or community seeking funding under this call by submitting an application.</p> <p>An applicant may be a consortium/multi-beneficiary or a sole applicant/mono-beneficiary.</p>

³⁷ <https://climate-adapt.eea.europa.eu/en/mission/>

	Note that in the online submission portal, Plaza, applicant is also referred to as Lead Partner.
Application	For the purposes of this call, application is the mechanism by which an applicant submits information to assess whether a subgrant award will be made.
Bioregion	A bioregion is a region defined by characteristics of the natural rather than man-made divisions.
Consortium Coordinator	<p>The coordinator is the primary contact and represents the application and subgrant beneficiaries. Sole Applicants, also referred to as mono-beneficiary applicants, hold the coordinator role.</p> <p>Note that in the online submission portal, Plaza, Consortium Coordinator is referred to as Project Leader. Applicants will be prompted to enter the consortium information. In the online submission portal, Plaza, this section is referred to as “Climate-KIC Partners & role”.</p>
ESPON	European Observation Network for Territorial Development and Cohesion
HE	Horizon Europe
Key Enabling Conditions (KEC)	Refer to the critical factors or prerequisites that need to be addressed and strengthened to enable the transformation of Key Community Systems (KCS) when designing climate resilience pathways and innovation agendas. KECs are the essential building blocks that support the successful implementation of transformative climate adaptation and resilience measures at regional and community levels. They encompass various factors that influence the effectiveness and feasibility of climate resilience actions and initiatives. These include finances and resources; knowledge and data; governance and engagement; behavioural change (skills and capabilities).
Key Community Systems (KCS)	<p>A system that meets important basic societal needs but that is increasingly impacted by climate change. A key community system is an area of innovation and transformation for the Mission, part of a larger interdependent system.</p> <p>They include critical infrastructure; health and wellbeing; ecosystems and nature-based solutions; water management; land use and food systems; local economic systems</p>
LAU ³⁸	Local Administrative Units are used to divide up the territory of the EU for the purpose of providing statistics at a local level. They are low level administrative divisions of a country below that of a province, region, or state. Not all countries classify their locally governed areas in the same way and LAUs may refer to a range of different administrative units, including municipalities, communes, parishes, or wards.
NUTS ³⁹	Nomenclature of Territorial Units for Statistics is a hierarchical system for dividing up the economic territory of the EU and the UK for the purpose of:

³⁸[https://ec.europa.eu/eurostat/statistics-explained/index.php?title=Glossary:Local_administrative_unit_\(LAU\)](https://ec.europa.eu/eurostat/statistics-explained/index.php?title=Glossary:Local_administrative_unit_(LAU))

³⁹<https://ec.europa.eu/eurostat/web/nuts/background>

	<ul style="list-style-type: none"> • The collection, development, and harmonisation of European regional statistics • Socio-economic analyses of the regions <ul style="list-style-type: none"> ○ NUTS 1: major socio-economic regions ○ NUTS 2: basic regions for the application of regional policies ○ NUTS 3: small regions for specific diagnoses
P2R	Pathways2Resilience
Pathway	Logical steps towards the achievement of the expected impacts of the project over time, in particular beyond the duration of a project. A pathway begins with the projects' results, to their dissemination, exploitation and communication, contributing to the expected outcomes in the work programme topic, and ultimately to the wider scientific, economic and societal impacts of the work programme destination.
Regional Resilience Journey (RRJ)	A framework and core of methodology used by P2R to guide and support communities/regions in their path toward climate resilience and transformation.
Resilience Maturity Curve (RMC)	Is the monitoring and evaluation framework used by P2R to assess and benchmark the resilience capacities within regions and communities. It provides a comprehensive picture of the current state of climate resilience, including the strengths, weaknesses, and gaps in the region's or community's ability to cope with climate change impacts and disturbances.
Subgrants	Subgrants are the mechanism by which funding from the P2R grant flow to subgrantees. This is also known as financial support to third parties under Horizon Europe.
WP	Work Package
Whole-of-government	Collaborative approach between the different public bodies that extends beyond their respective fields of competence with a view to providing the public with a combined response from a single body.

14 Annex 1 : Target number of subgrantees per country

In order to balance country diversity and population size, the following table will be used during the selection process to establish the target number of subgrantees per country. Note that the target numbers are purely indicative and serve to counterbalance the rest of the selection process.

Country code	Country name	Target	Selected for Call 1	Target for Call 2
TR	Türkiye	4	2	2
DE	Deutschland / Germany	4	1	3
UK	United Kingdom	4	2	2
FR	France*	3	2	1
IT	Italia	4	2	2
ES	España / Spain	4	2	2
PL	Polska / Poland	4	1	3
UA	Ukraine	4		4
RO	Romania	3	1	2
NL	Nederland / Netherlands	3	2	1
BE	Belgique/België / Belgium	3		3
CZ	Česko / Czechia	3	2	1
SE	Sverige / Sweden	3	1	2
PT	Portugal	3	2	1
EL	Elláda / Greece	3	2	1
HU	Magyarország / Hungary	2	1	1
AT	Österreich / Austria	2		2
CH	Switzerland	2		2
BG	Bulgaria	2		2
RS	Serbia	2	1	1
DK	Danmark / Denmark	2	1	1
FI	Suomi/Finland	2	1	1
NO	Norge / Norway	2		2
SK	Slovensko / Slovakia	2	1	1
IE	Éire/Ireland	2	2	0
HR	Hrvatska / Croatia	2	1	1
GE	Georgia	2		2
BA	Bosnia and Herzegovina	2	1	1
MD	Moldova	2		2
AM	Armenia	2	1	1
LT	Lietuva / Lithuania	2	1	1
AL	Albania	2	1	1
SI	Slovenija / Slovenia	2	1	1

*FOR	French Outermost Regions	1		1
LV	Latvija / Latvia	1		1
MK	North Macedonia	1	1	0
XK	Kosovo	1		1
EE	Eesti / Estonia	1	1	0
CY	Kypros / Cyprus	1	1	0
LU	Luxembourg	1		1
ME	Montenegro	1	1	0
MT	Malta	1		1
IS	Ísland / Iceland	1		1
FO	Faroe Islands	1		1

*Due to lack of data consistency relevant for evaluation, French territories have different target numbers for “mainland France” and “French Outermost Regions”.