

PATHWAYS2RESILIENCE

Pathways2Resilience handbook

A region's guide to navigating your 18-month
journey to climate resilience



Funded by
the European Union



www.pathways2resilience.eu

Table of contents

| | |
|---|-----------|
| Introduction | 3 |
| What is this handbook for? | 3 |
| Who is this handbook for? | 3 |
| How to use this handbook | 3 |
| Part 1: Your journey to climate resilience | 4 |
| Your destination: strengthening transformative climate adaptation and resilience. | 4 |
| Your local team: define roles and functions to actively participate. | 5 |
| Your roadmap: the Regional Resilience Journey | 9 |
| Your basecamp: the Resilience Maturity Curve | 13 |
| Your journey outputs: deliverables. | 14 |
| Your journey observations: monitoring and reporting | 16 |
| Part 2: Onboarding kit | 17 |
| Guidance for developing the climate resilience strategies and action plans | 17 |
| Guidance for developing the climate resilience investment plans | 18 |
| Key enabling conditions and key community systems | 19 |
| Capacity building activities | 20 |
| Pathways2Resilience Climate Toolbox. | 22 |
| Communication guidelines | 22 |
| Pathways2Resilience glossary | 23 |
| About Pathways2Resilience | 25 |
| Stay up-to-date and engage with our channels | 25 |



Introduction

What is this handbook for?

This handbook is designed to support you, as Programme Manager or Head of the regional Pathways2Resilience team, in taking the first steps as a participant in the programme.

It provides an overview of the Pathways2Resilience framework and activities, and the practical tools and resources available to you as you undertake your journey to climate resilience. It will continue to be a valuable resource throughout your journey, helping you stay oriented during high-demand times and clarify any doubts. Additionally, it serves as a useful guide for new team members joining the project or for someone stepping in to replace you.

Over the next 18 months, working with the Pathways2Resilience partners, your team is expected to produce several important [outputs and deliverables](#). This handbook is designed as a roadmap to help you gain confidence in understanding the tasks ahead and to ensure a smooth and organised approach.

Who is this handbook for?

This handbook is primarily **designed for Pathways2Resilience Programme Managers and/or Heads of Pathways2Resilience regional teams**.

As Programme Manager, you play a crucial role in overseeing the implementation and progress of the Pathways2Resilience programme within your region. Your responsibilities include ensuring that the programme's objectives are met, providing guidance and support to your team, and serving as the primary point of contact between the Pathways2Resilience consortium and your region.

How to use this handbook

In the [first part](#) of this handbook, you will find an overview of the programme's objectives and a description of the crucial concepts that you and your team will frequently encounter, as well as a timeline of major activities and a list of your main deliverables and reports.

Throughout this journey, your team and region will be guided and supported by an onboarding kit, providing specific guidance and capacity building activities prepared by the Pathways2Resilience programme experts. [The second part](#) of this handbook gives you an overview of the onboarding kit's content, and provides information about each resource, how you can use it, and how it fits in your journey and deliverables.

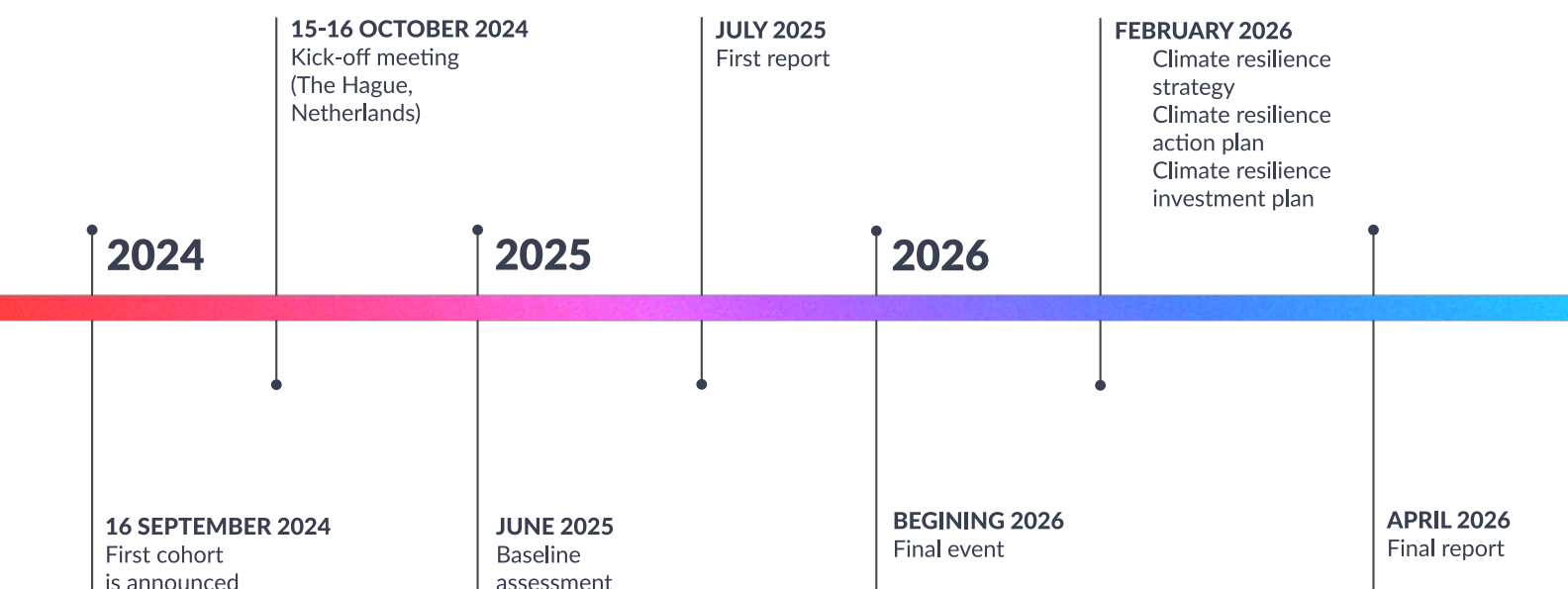
Part 1: Your journey to climate resilience

Welcome! You are about to embark on an exciting 18-month journey towards transformative climate adaptation and resilience in your region.

This journey is designed to equip you with the knowledge, tools, and support necessary to achieve significant milestones and create lasting impact.

Along the way, you will engage in various activities, training sessions, and collaborative efforts, all aimed at strengthening your region's ability to adapt to and thrive amidst climate challenges.

An overview of your 18-month journey



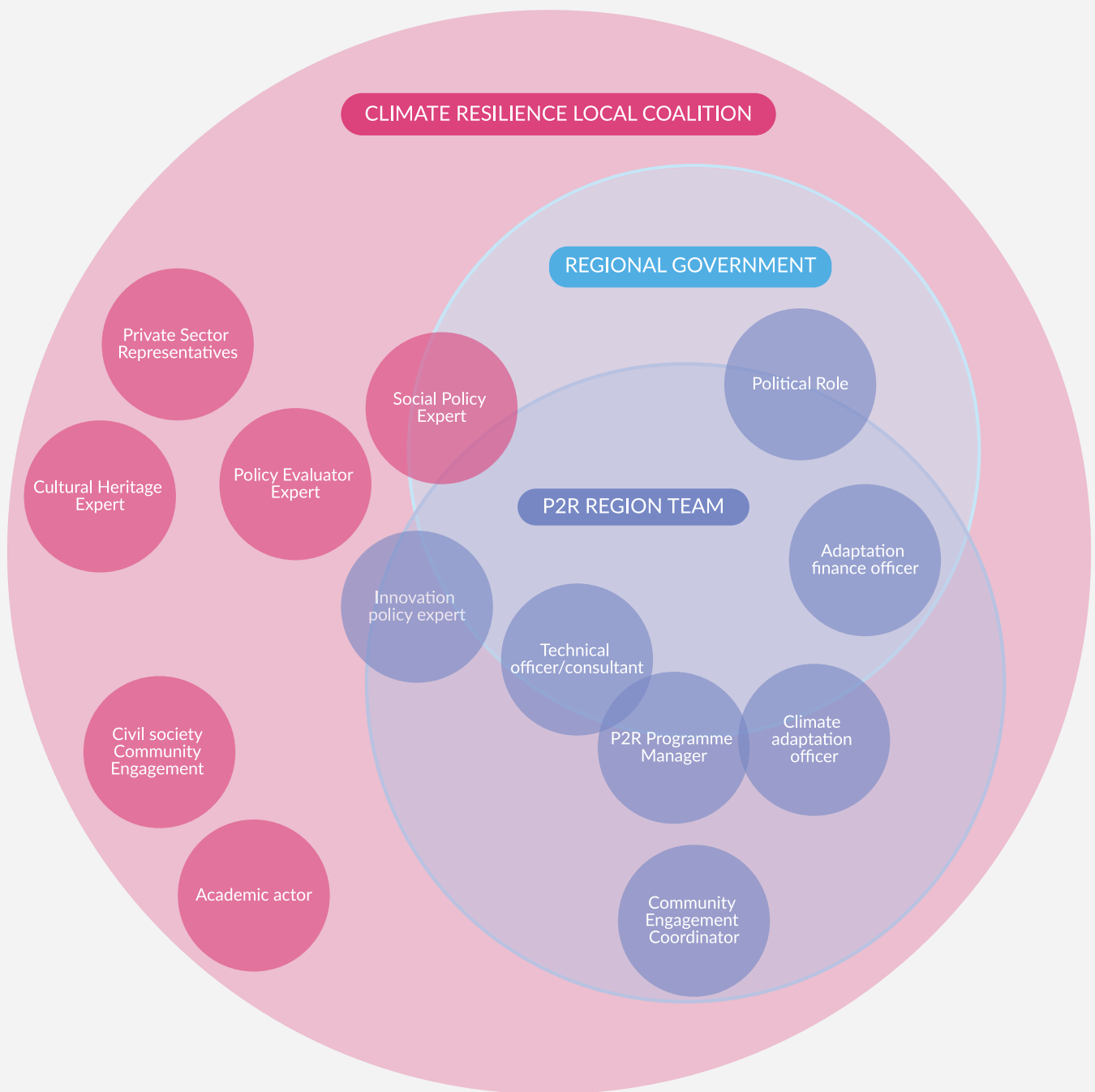
Your destination: strengthening transformative climate adaptation and resilience

In line with the objectives of the [EU Mission on Adaptation to Climate Change](#) and [European Green Deal](#), you will be supported by Pathways2Resilience to create climate resilience strategies (outlining multiple 'pathways') with a systemic, transformative approach.

Climate impacts and adaptive capacities differ greatly across regions, from those already having detailed knowledge of climate risks and risk mitigation measures, a diversity of competencies, and well-functioning governance structures, to more vulnerable communities.

Depending on your resilience maturity, you will be able to access tailored training, peer mentoring, and Innovation Practice Groups, developed by Pathways2Resilience experts and other regions in your group.

Your local team: define roles and functions to actively participate



Forming a diverse, cross-sectoral team is crucial to navigate the Regional Resilience Journey and design successful strategies, action plans and investment plans. Engaging representatives from various departments and sectors ensures that all relevant perspectives and expertise are integrated, fostering a comprehensive approach to climate resilience.

Regions will be required to nominate a Pathways2Resilience programme manager and to bring in various roles and functions at different stages of the programme, to actively participate in and engage with the Pathways2Resilience activities.

Here's a brief description of the roles¹ that constitute this ideal team and are strongly recommended for direct involvement in the programme:



Pathways2Resilience programme manager (mandatory)

Responsible for overseeing the implementation and progress of the programme in their respective region, as well as the coordination of different regional functions and actors that will need to get involved in Pathways2Resilience (for example, social policy expert or innovation policy officer, among others).

The programme manager ensures that the programme's objectives are met, and they provide guidance and support to their teams. They are the main point of contact between the Pathways2Resilience consortium and the region.



Climate adaptation officer

Operates at regional level with a clear mandate to lead the development of a climate adaptation strategy. This role involves a deep understanding of adaptation planning and is responsible for guiding a region-wide approach to mitigate the impacts of climate change.

This role, alongside the technical officer role, will focus on the development of the [climate resilience strategy](#) and [action plan](#).



Technical officer/consultant

Operates at the regional level and works closely together with the climate adaptation officer. This role is responsible for conducting the technical risk and options assessment activities that inform the development of the climate resilience strategy, including data collection, computational modelling of current and future risks, and the modelling of potential options and pathways.

They are also responsible for the development and specification of the adaptation monitoring plan to track ongoing adaptation needs.

This role, alongside the climate adaptation officer role, will focus on the development of the [climate resilience strategy](#) and [action plan](#).



Adaptation finance officer

Operates at regional level and leads day-to-day operations regarding the design and implementation of the financing of the regional climate resilience strategy.

This role will focus on the development of the [climate resilience investment plan](#).

¹ Please note these roles have been described in isolation but it is understood that two (or more) of these roles might be performed by the same person, depending on the specific profile, availability, etc. of the participant.

Community engagement coordinator



Responsible for facilitating dialogue between local stakeholders and the regional authorities, and ensuring that local communities are actively involved in the Pathways2Resilience programme.

This role engages with various stakeholders in the region, including vulnerable groups, private sector, and citizens, to ensure their concerns, hopes and expectations about regional climate resilience are heard and included in the process. To this end, they identify when and how these stakeholders can be involved and the process to effectively include their views in the [climate resilience strategy](#) and [action plan](#).

They might also facilitate participatory processes such as visioning sessions and theory of change workshops. Note that this role can be filled in by a local non-governmental organisation (NGO) and/or academic experts with the ability to facilitate co-creation processes.

Political role



Operates at the regional level, providing strategic advice and support to elected political leaders on climate resilience and adaptation policies.

The political role involves advising on policy development and facilitating decisions making processes with regards to the Climate resilience strategy and investment plan. While not expected to be fully involved in the entire Pathways2Resilience journey, this role plays a crucial part in ensuring political alignment and support at key stages of the programme.

Innovation expert



Focuses on the integration and promotion of innovative solutions within the climate resilience strategy at the regional level. This role is responsible for identifying, developing, and implementing actions, including policies, that can foster innovation in climate adaptation and resilience.

The innovation expert has a good understanding of how the region uses innovation in their socio-economic activities and other areas, and ideally understands the different mechanisms to support innovation at the regional, national and EU level. This expert has a good network of collaborators from private sector, civil society and research institutions who can bring innovative ideas into the climate resilience strategy.

Ideally, this role works closely with the climate adaptation officer and adaptation finance officer to ensure that innovation is integrated into the [climate resilience strategy](#).

Note that this expert might come from a civil society and/or academic background.

Tailoring your team to your region's needs

A very diverse set of regions has been selected to participate in Pathways2Resilience, varying widely in terms of size, team composition, cultural context, priorities, government structures, and available resources.

Tip #1: Flexibility

Flexibility in team roles and structures is essential to accommodate these differences. For example:

- **Combined roles:** In some regions, the roles of programme manager and climate adaptation officer, or programme manager and community engagement coordinator, may be held by the same person.
- **Multi-skilled officers:** A climate adaptation officer may also specialise in adaptation finance or technical aspects of adaptation, depending on their background and expertise.
- **Generalist roles:** In regions where there is no designated climate adaptation officer, it may be practical to delegate someone with a more general job title to lead the project.

Tip #2: The right skillset

Instead of focusing on a specific number of team members, ensure your project includes the relevant competences and experience necessary for success. Your core team will also likely collaborate with a broader range of specialists and stakeholders. These additional team members are encouraged to participate in Pathways2Resilience activities and utilise the programme's resources. For example:

- Political roles, elected officers
- Cultural heritage manager

Further resources

We will provide you with the full description of each role's key areas of expertise and influence, as well as practical recommendations and tips on several key areas:

- **Management, workload and timing:** How to establish strong leadership, clear responsibilities, and efficient team coordination; strategies for planning realistic timelines, managing tasks, and maintaining team productivity.

- **Roles and skills to have on board:** An overview of the essential roles and diverse skills needed to ensure your team is equipped for success.

- **Building a mandate and relationships with elected bodies and governors:** Insights into securing support from political stakeholders and aligning your project with regional goals.

- **Communication and contact:** Tips on developing a communication plan that ensures clear and consistent engagement with all stakeholders.

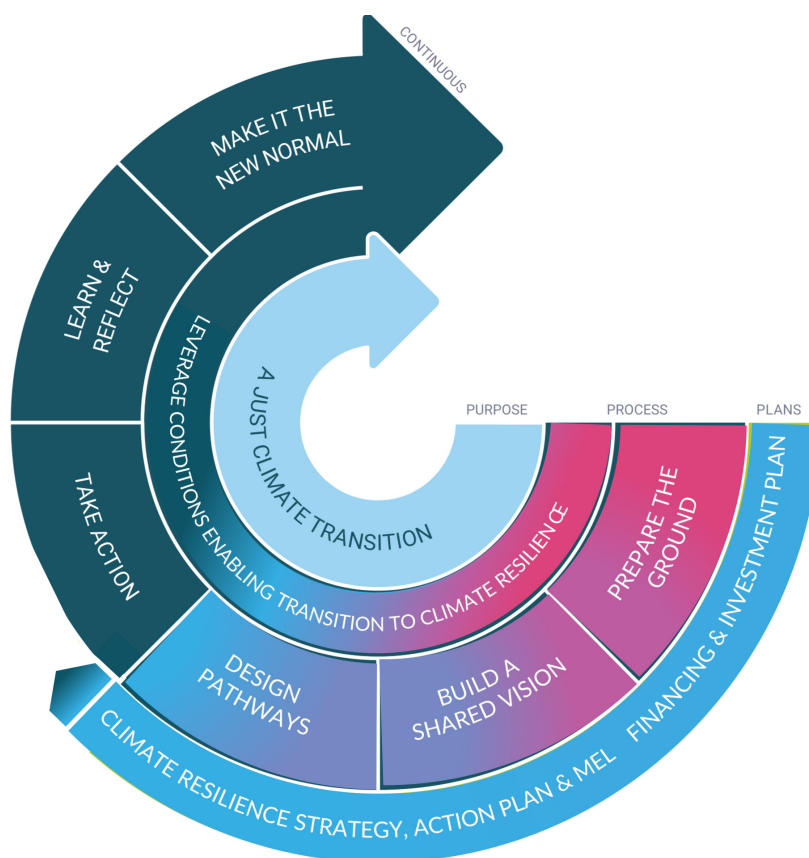
- **Culture:** Recommendations for integrating cultural sensitivity into your project, respecting local traditions, and fostering community support.

- **Additional considerations:** Advice on addressing potential risks, promoting sustainability, and implementing regular evaluations to adapt and improve your project over time.



Your roadmap: the Regional Resilience Journey

Your journey to climate resilience will be underpinned by a rigorous theoretical framework, the 'Regional Resilience Journey', developed by Pathways2Resilience programme experts.



An overview of the Regional Resilience Journey you will undertake during Pathways2Resilience.

The Regional Resilience Journey is an adaptable framework for regions and communities that wish to transition to climate resilience through a transformative adaptation approach. Over the next 18 months, it will accompany you in the process of creating your transformative adaptation strategy under Pathways2Resilience.

The framework provides step-by-step guidance, a set of activities, tools and milestones that will help your region to either develop your first climate resilience plans and intervention portfolios, or to improve your existing ones by applying a systemic approach, just transition principles and by harnessing transformative innovation.

In this sense, the Regional Resilience Journey is an iterative tool: you are encouraged to use the framework (or parts of it) multiple times, revisiting assumptions, learning from insights and stakeholder sentiment, even after project end. Gaps in knowledge, data or finance will become clear as different elements are explored or stakeholders engaged.

Important! It is not necessary to use the Regional Resilience Journey as a whole new methodology, starting from scratch. The framework is designed for you to collect the necessary information and to be used in the most strategic way possible, recognizing that you know best what you need.

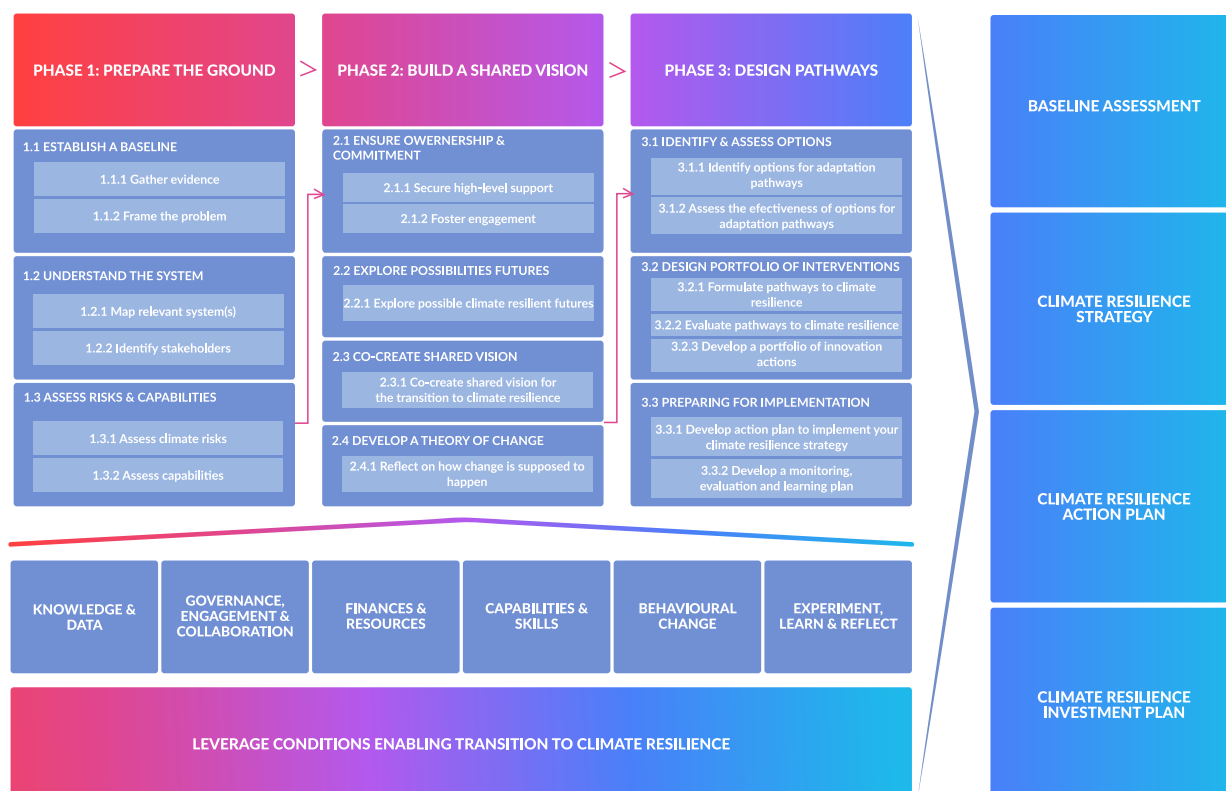


“The novelty of the Regional Resilience Journey is that it extends beyond the incremental nature of the [Regional Adaptation Support Tool \(RAST\)](#) developed by the European Environment Agency (EEA).

To help regions not just withstand but flourish in their future climates, we have incorporated steps and processes that introduce a transformative dimension, acknowledging the complexity of systemic change. And to integrate adaptation and mitigation efforts, we have deliberately aligned with the [Climate Transition Map](#) used by NetZeroCities.”

Thomas Koetz, Pathways2Resilience programme lead and senior advisor for climate resilient regions at EIT Climate-KIC

The three main phases of the Regional Resilience Journey



An overview of each phase of the Regional Resilience Journey and the resulting outputs.

**PHASE 1
PREPARE THE GROUND**

First, you need to understand what's already being done, who are the key actors and institutions you need to involve, and what actions will support long-term results (for example, upskilling and reskilling programmes).

You also need to assess your climate risks and opportunities for prosperity, starting from scratch. The framework is designed for you to collect the necessary information and to be used in the most strategic way possible, recognizing that you know best what you need.

**PHASE 2
BUILD A SHARED VISION**

Now it's time to mobilise your local community and key groups, to build a shared vision that integrates different perspectives and just transition principles that everyone feels committed to. This will set the destination of your journey as well as roles and accountabilities.

**PHASE 3
DESIGN PATHWAYS**

What's key at this stage is to ensure the interventions you plan follow a 'portfolio' approach. In other words, you need to include sufficient options that can complement and reinforce each other – to mitigate risks, to experiment and test, and to withstand uncertainty.

These coordinated interventions should also foster innovation by integrating research, new technologies, and collaboration across sectors and administrative departments.

Underpinning these phases and beyond: foster the enabling conditions

'Enabling conditions' for climate resilience may include securing finance, gathering robust data, setting up governance structures, and generally ensuring widespread commitment and collaboration from local communities and groups.

It is fundamental to map these at the outset, and further develop and strengthen them throughout your journey. They will make all the difference between 'simply' adapting to the changing climate and proactively shaping a resilient system capable of withstanding challenges far into the future (including those you cannot foresee).

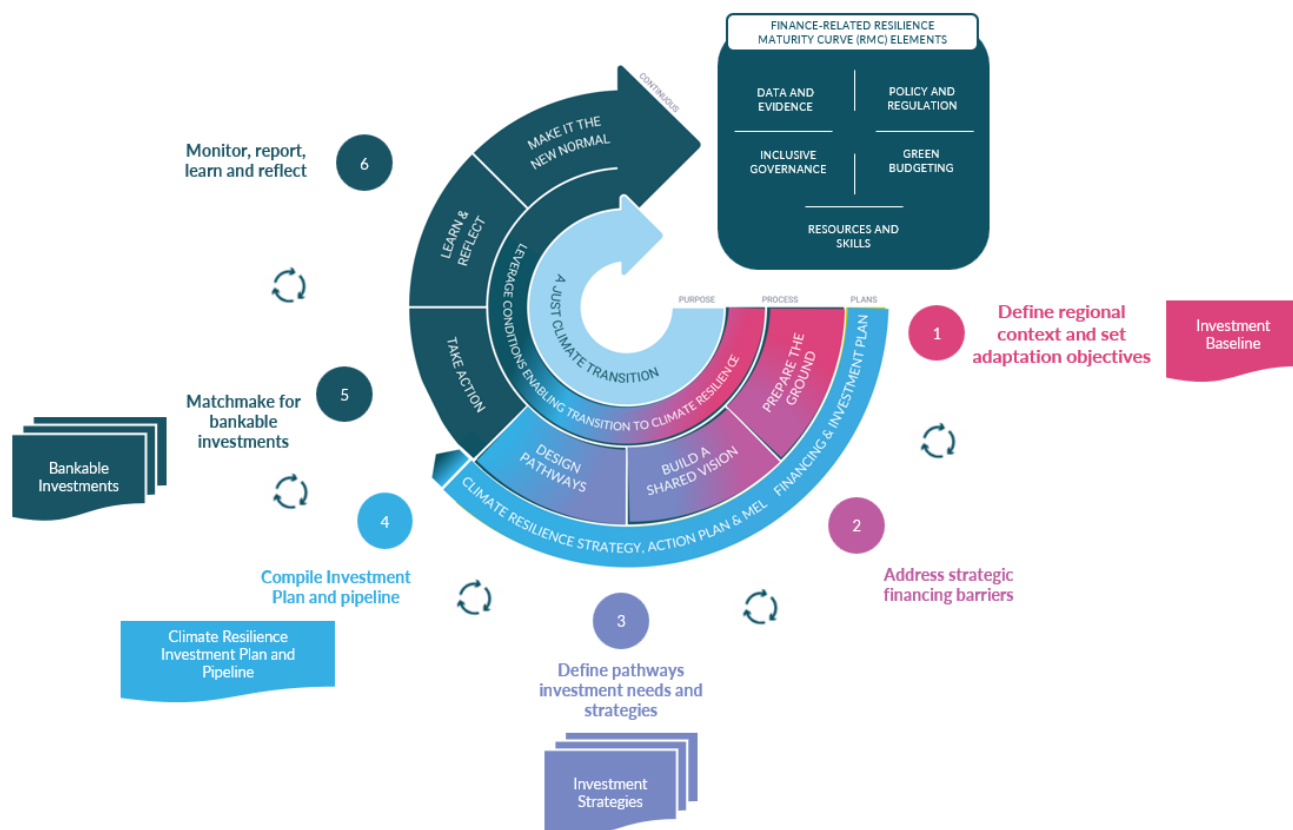
You will find further resources on the Regional Resilience Journey in the [guidance for developing the climate resilience strategies and action plans](#).

Financing your climate resilience strategy and action plan

Because the delivery of a climate resilience strategy and action plan depends on the availability of finance, and robust financing plans depend on knowing what you want to do, the Regional Resilience Journey is supported by an Adaptation Investment Cycle.

This framework is designed to translate your vision into bankable adaptation projects and programmes, resulting in a [climate resilience investment plan](#).

A summary of the process is shown here, with more details and resources in the dedicated [guidance for developing the climate resilience investment plans](#):



The Adaptation Investment Cycle within the Regional Resilience Journey.

Your basecamp: the Resilience Maturity Curve

As you applied to the Pathways2Resilience programme, you were asked to self-assess your resilience capacities through the Resilience Maturity Curve tool, which helps regions assess and monitor their readiness for transformative climate change adaptation, resulting in an adaptive capacity score.

The Resilience Maturity Curve (RMC) is a novel monitoring, evaluation and learning model developed by Pathways2Resilience experts. It combines evaluation of four resilience capacities: the capacity to anticipate, adapt, absorb, and transform. It recognises that regions and communities may have varying levels of resilience maturity. The overall resilience of a region is enhanced by acquiring these capacities. This can be achieved through a range of interventions that address both immediate and long-term regional adaptation needs.

The Resilience Maturity Curve is structured around a self-assessment questionnaire that aligns with the various steps of the Regional Resilience Journey, including the [key enabling conditions](#) and the Adaptation Investment Cycle.

Your adaptive capacity score from the Resilience Maturity Curve tool is crucial for guiding your climate resilience pathways and innovation strategies, as it provides a clear picture of your current resilience maturity level.

Important! Your journey to climate resilience is not linear. You can retake the Resilience Maturity Curve self-assessment at any time, using it as a tool to continuously assess and monitor your progress.



Your journey outputs: deliverables

This part of your journey focuses on the crucial outputs that you will produce over the course of your Regional Resilience Journey, and will be the building blocks in formulating your region's climate resilience pathways.

Each deliverable is linked to a specific phase of the Regional Resilience Journey. Let's break down what you need to achieve and how you can do it:

1. CLIMATE RESILIENCE BASELINE ASSESSMENT

The baseline assessment covers key elements of the ['prepare the ground'](#) phase, including in particular:

- An assessment of current and predicted future climate risks and vulnerabilities, including a prioritisation of the key and most urgent ones.
- A description of the different sectors, including [key community systems](#), involved and impacted by the transition to climate resilience, including their relationships, key interdependencies and cascading effects; economic, social and ecological drivers and consequences; as well as policies impacting and impacted by climate risks and regional resilience maturity.
- An assessment of adaptive capacities, competences and resources relevant for achieving a just transition to climate resilience, including a list of needs that should be addressed as a matter of priority, for example with regard to [key enabling conditions](#).
- A map of stakeholders, vulnerable groups and inequities, including a stakeholder assessment matrix mapping the interest and influence of each target group, and their impact in regional resilience; a stakeholder profile to identify their mandate, field of action and strategic interrelations; an influence map to scope out the impact of the project in the regional communities.



2. CLIMATE RESILIENCE STRATEGY

The climate resilience strategy covers key elements of the ['build a shared vision'](#) phase, including:

- A shared vision of the climate resilient future that the region wants to achieve, providing a compelling, engaged, co-created narrative that should allow you to mobilise stakeholders in your region required to implement and sustain your plan.
- A description of the adaptation and climate resilience transition pathways, outlining a portfolio of interventions drawn from a range of adaptation options. This should include an assessment of the effectiveness of identified options and their needs in terms of enabling conditions.
- A co-developed stakeholder engagement strategy and participatory design process, including the description of engagement mechanisms and structures. These can be planned or already established, and should be linked to the key enabling conditions.
- An overview of identified regional transformation potentials and possible climate resilient futures, including the key enabling conditions that regions and communities would need to address and strengthen (building on the baseline assessment).

3. CLIMATE RESILIENCE ACTION PLAN

The climate resilience action plan covers key elements of the [‘design pathways’](#) phase, including:

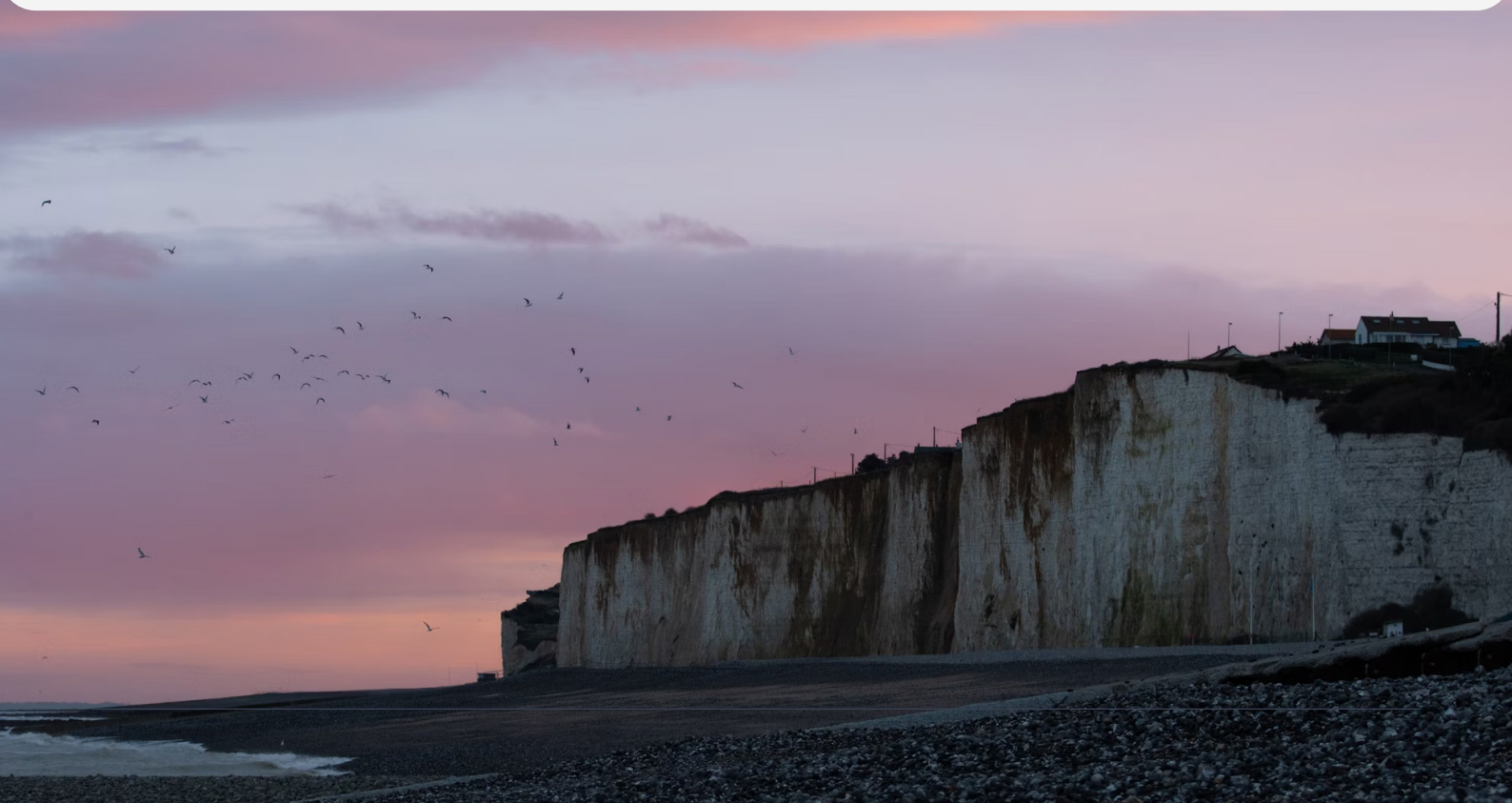
- A description of the short-term and mid-term activities that the region will conduct in order to implement its adaptation strategy, including priority of these actions, roles, responsibilities, and resources.
- A monitoring, evaluation and learning framework for implementing the action plan, adaptation pathways, and investment plan. This should include a description of how different actions contribute to the desired outcomes and changes, and identify how to monitor progress.
- An innovation agenda (that is, a set of innovation activities) in support of the adaptation pathways.



4. CLIMATE RESILIENCE INVESTMENT PLAN

The climate resilience investment plan translates the shared vision into a pipeline of bankable projects, ensuring the resources are available to deliver the climate resilience strategy and action plan. Its key components include:

- A summary of the investment context in your region, including an assessment of current and future costs, and the relevant investment processes and criteria.
- A catalogue of existing sources and instruments in your region to finance adaptation and future options you are planning to explore.
- A series of investment strategies for the adaptation pathways developed in your climate resilience strategy.
- A pipeline of bankable projects associated with the action plan, along with actions to improve the enabling conditions for financing.



Your journey observations: monitoring and reporting

In order to unlock the financial support and allow monitoring of your journey, you'll be required to provide reports of your activities to the Pathways2Resilience team. Each report will include both technical and financial aspects:

- The technical aspect will include monitoring progress through the four deliverables, key indicators, as well as feedback on the Pathways2Resilience programme.
- The financial aspect will focus on the actual eligible costs you've incurred, comparing to the original budget, and justify deviations.

We will provide you with the relevant forms and templates at least three months prior to the report submission deadline.

Payments to subgrantees will be made in instalments to allow for monitoring of deliverables and risk mitigation, following the planned payment schedule below. Payments will be subject to satisfactory reporting and associated financial risk factors, as outlined in the subgrant agreements.

| Payment instalment | Reporting period | Deadline to submit the report | Payment description | Percent of subgrant award paid |
|--------------------|---|-------------------------------|---|--------------------------------|
| 1 | N/A | N/A | Pre-payment made after subgrant agreement is signed. | 30 |
| 2 | 1 September 2024 – 31 May 2025 (months 1-9) | July 2025 (month 11) | Payment made within 6 months after approval of 1st reporting. | 40 |
| 3 | 1 June 2025 – 28 February 2026 (months 10-18) | April 2026 (month 20) | Payment made within 6 months after approval of 2nd reporting. | 30 |

Part 2: Onboarding kit

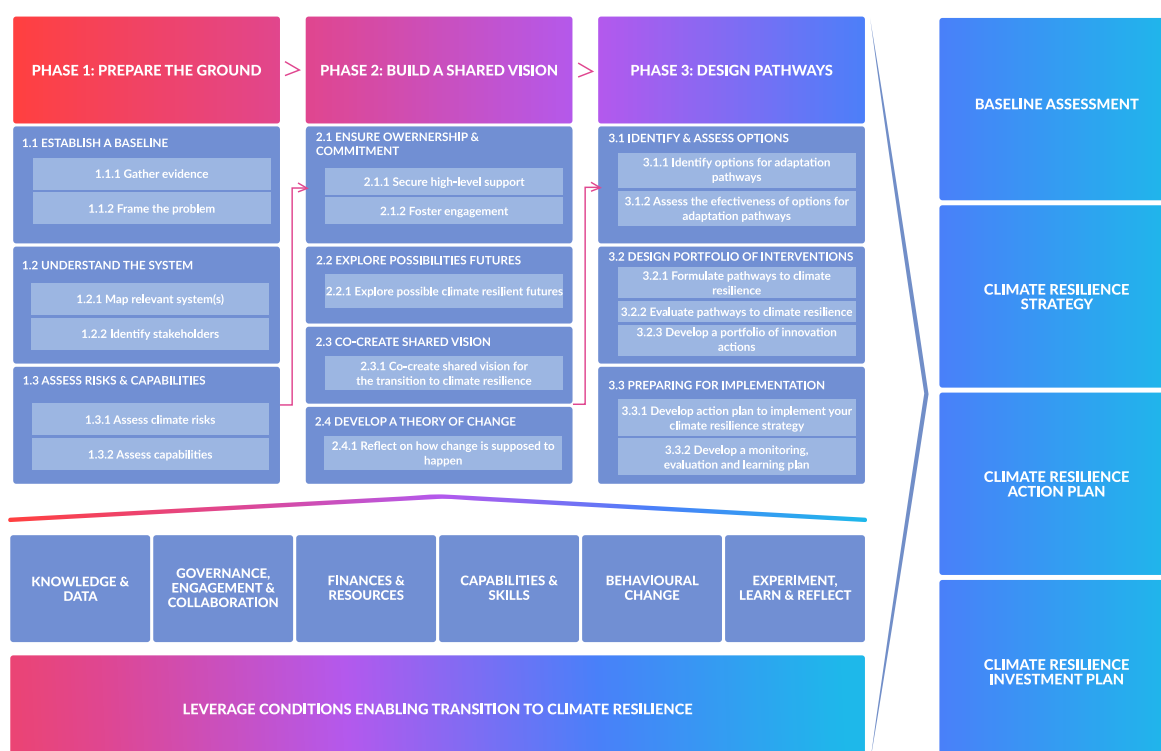
The onboarding kit is a collection of resources, materials, guidance, and guidelines designed to support you and your region throughout your journey in Pathways2Resilience.

Below is a brief overview of the key documents that you will receive as part of the onboarding kit. These resources are tailored to provide essential tools and information to help you achieve your deliverables, and broadly support your region to achieve climate resilience.

Guidance for developing the climate resilience strategies and action plans

This central guidance sets out the approach to develop your baseline assessment, and the climate resilience strategy and action plan for your region (see [outputs and deliverables](#)).

It covers the first three phases of the Regional Resilient Journey, broken down into 18 separate tasks, as well as listing the enabling conditions that should be leveraged. These are shown below:



The phases and tasks to develop a baseline assessment, a climate resilience strategy and an action plan.

The guidance has been designed specifically for the roles leading on or contributing to the development of your region's climate resilience strategy and action plan, as well as those who need to be aware of the approach taken, such as:

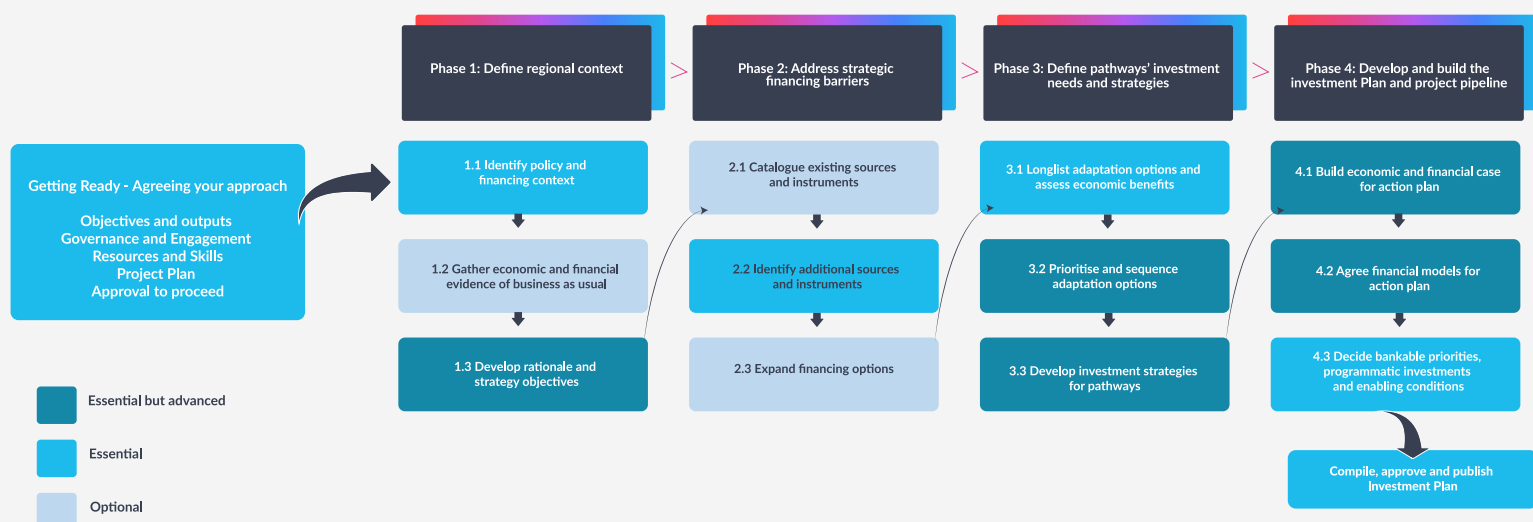
- Those being engaged in, or participating in the development of a climate resilience strategy and/or investment plan, who want to understand the process in more detail.
- Technical staff or consultants supporting regions in developing elements of your climate resilience strategy and action plan, including more detailed technical guidance for each task in the annex of the guidance document.

Guidance for developing the climate resilience investment plans

As part of the overall Regional Resilience Journey, Pathways2Resilience has developed an Adaptation Investment Cycle to support the development of a climate resilience investment plan, which translates the shared vision into bankable projects.

The Adaptation Investment Cycle is aligned to the main Regional Resilience Journey steps, meaning that some inputs are relevant for the journey, and vice versa. They also coincide at key stages, notably the development and assessment of adaptation options, pathways and action plans, where financial viability and economic performance are key factors in deciding whether to proceed with different actions.

The finance guidance sets out the approach to develop the climate resilience investment plan for your region. It covers the first four phases of the Adaptation Investment Cycle, with 13 separate tasks. These are shown below:



The phases and tasks to develop a climate resilience investment plan.

Further detail on this process is set out in the detailed financial guidance. This guidance is developed for those leading the development of your region's climate resilience investment plan, as well as those who need to be aware of the approach, such as:

- Those being engaged in, or participating in the development of a climate resilience strategy and/or investment plan, who want to understand the process in more detail.
- Financing institutions who are being asked to support adaptation in a region, or who may be proactively looking for investment opportunities.
- Consultants supporting regions in developing elements of their climate resilience investment plans.

Throughout the detailed technical guides, we have highlighted the key links between the Regional Resilience Journey and the Adaptation Investment Cycle, to allow those leading each process to draw from the other. A full overview of the links between the two processes is included in the appendix of each guide.

Key enabling conditions and key community systems

To accelerate transformative climate resilience, it is fundamental to establish a regional environment where such change can take place.

Key Enabling Conditions (KECs) are 'catalyst' elements in this process. They include access to knowledge and data, governance models, stakeholder engagement, financial resources, and skills. These conditions represent cross-cutting areas that are relevant for regions across different resilience maturities.

Mapping these enabling conditions from the outset and continuously developing and fostering them during your Regional Resilient Journey is crucial to meet your objective of a just climate transition.

Given the importance of finance, Pathways2Resilience has included dedicated resources in our [guidance for developing the climate resilience investment plans](#), while the remaining key enabling conditions are covered in the [guidance for developing the climate resilience strategies and action plans](#).

Key Community Systems (KCS) are those key areas of interaction between humans and the environment, that meet essential societal needs but are increasingly impacted by climate change. We will focus predominantly on six, but please note that these are broadly defined categories that can overlap or be adjusted depending on your context:

- Ecosystems and nature-based solutions
- Land use and food systems
- Water management
- Critical infrastructure
- Health and human wellbeing
- Local economic systems.

Further resources and guidance on how to identify and strengthen these KECs and KCSs will be directly addressed through the Innovation Practice Groups that Pathways2Resilience is facilitating to exchange best practices amongst regions and practitioners as part of the [capacity building activities](#).



Capacity building activities

Developing a transformative climate resilience strategy is an ambitious undertaking. To support you in this journey, we have designed a highly innovative 18-month capacity building and knowledge exchange programme of activities. This programme is structured to provide you with the insights needed to integrate into the context and practices of your region. Through a combination of interactive, engaging, and transformative learning exchanges, you will gain the skills and knowledge needed to drive meaningful change.

The Pathways2Resilience programme is carefully planned to balance your existing tasks, requiring an average time commitment of two days per month. Activities are scheduled from October 2024 to February 2026, with sessions taking place on the second Wednesday and fourth Thursday of each month (for example, Wednesday 13 November and Thursday 28 November). Most of the learning activities will be conducted online, with the exception of the in-person kick-off meeting. The programme also considers the seasonal nature of your work, with fewer activities scheduled around December and during the summer months.

The Pathways2Resilience programme will collaboratively build knowledge across a range of thematic areas, bringing together experts, practitioners, citizen groups, and key economic sectors. The core activities include:

GROUP TRAINING SESSIONS

These practical sessions are designed to build the technical capabilities that regions will need to complete their climate resilience strategy, climate resilience action plan and climate resilience investment plan, through novel learning experiences focusing on climate adaptation, covering all elements of the Regional Resilience Journey and the associated Adaptation Investment Cycle.

A comprehensive calendar of activities has been prepared to support regions throughout their journey, ensuring you receive timely and relevant training at each stage of the process.

Throughout the capacity building programme, the Pathways2Resilience expert team will generate live case studies with a small number of regions.

The insights extracted from this work will be integrated into the training activity programme for the benefit of the whole cohort.



INNOVATION PRACTICE GROUPS



The Innovation Practice Groups are dynamic, interactive working groups that play a crucial role in fostering collaboration and strategic thinking among regions and communities.

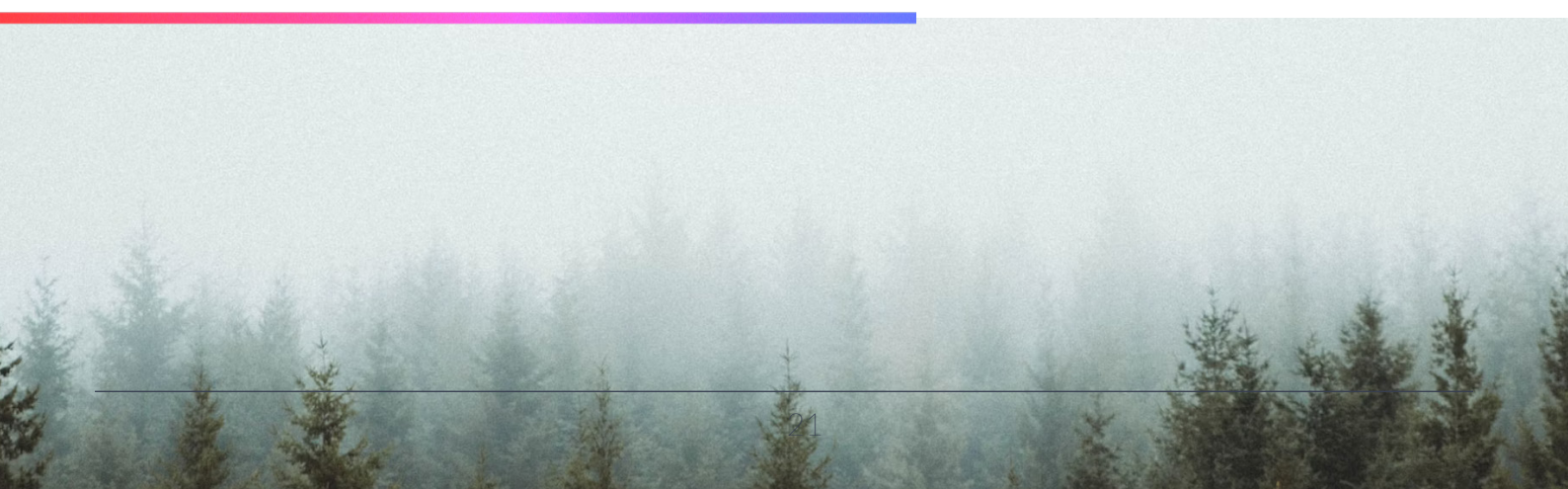
Organised around specific themes, these groups will engage a broad range of regional experts, citizen groups and practitioners to address [key community systems](#) in need of adaptation and the [key enabling conditions](#) underpinning transformative change.

These groups are more than just discussion forums: they are structured as learning and knowledge exchange mechanisms, led by regions and communities themselves. Their primary goal is to evaluate emerging plans, ideas, models, and solutions, providing a valuable platform for refining and enhancing regional adaptation strategies.

Innovation Practice Groups aim to foster collaboration among regions, encouraging strategic thinking and capacity building that supports the development of robust climate adaptation strategies. By facilitating regular interactions, Innovation Practice Groups cultivate communities of adaptation practitioners and promote the exchange of ideas, best practices, and success stories to strengthen regional climate resilience.

PEER-TO-PEER MENTORING PROGRAMME

A peer-led mentoring programme will facilitate learning and knowledge exchange between regions and communities at different stages in their Resilience Journeys. It will foster knowledge flows among the Pathways2Resilience participants in a self-organised, self-motivated, and decentralised way after programme ends.



Pathways2Resilience Climate Toolbox

The Pathways2Resilience climate toolbox, that you can access via our website, is designed to support and guide you during your Regional Resilience Journey and beyond.

This web-based toolbox offers a well-organised collection of open-access tools and resources, structured in a user-friendly manner to align with the key tasks you will undertake in your journey.

The toolbox contains the tools and materials referred to in the [guidance for developing the climate resilience strategies and action plans](#) and [investment plans](#), as well as additional relevant resources. These will help you understand what you need to do at each stage of the Regional Resilience Journey and how to meet those objectives.

The toolbox allows you to find tools and resources using different filters, such as your resilience maturity and other needs: for example, specific climate hazards, type of tool, and language.

The toolbox is intended for a diverse group of users, including individuals, groups, or organisations involved in adapting, transforming, and enhancing regional resilience. It is particularly relevant to those involved in urban or regional planning, budget allocation for innovative solutions, environmental departments and private landowners dealing with climate hazards, as well as development and innovation departments.

Communication guidelines

LAUNCHING YOUR COHORT: SPREAD THE WORD WITH US!

To celebrate the launch of your cohort's Regional Resilience Journey, we will make a public announcement on the Pathways2Resilience and partner channels on 16 September 2024, introducing the 40 selected regions, your 18-month journey and the highlights of the programme.

We would like you to join the campaign to maximise visibility and benefit from this buzz! We have prepared a [specific toolkit](#) with some materials you can adapt or translate, and share on your channels and with your local networks:

A press release for publication on your own channels (as a news article on your website, in your newsletters) or for sharing with media outlets.

Social media posts and visuals

Assets to include on your website and newsletters

Guidance and tips on hashtags, tags, and timings.

Important! Make sure to share the launch toolkit with your communications department and relevant partners to be ready to announce your selection on 16 September.

COMMUNICATING YOUR REGIONAL RESILIENCE JOURNEY PROGRESS

To help you communicate about your participation in the Pathways2Resilience programme and widely share your activities and results, we have prepared some guidance materials and templates that you can share online, print, or adapt into your language(s). You will be able to download these from the full onboarding kit.



Templates: Canva visuals for your social media channels and website; a simple flyer you can translate in your language.



Communication materials: flyers, roll-ups, posters, email banner.



Visual identity guidelines: logos, colour palette, graphic elements.



Social media guidelines: recommended hashtags and tags, sample social media post you can adapt or translate, tips for when to post.

Pathways2Resilience glossary

Pathways2Resilience is an ambitious programme that aims at equipping you with knowledge and skills in a range of complex fields (including innovation, finance, monitoring and evaluation).

In your 18-month journey, you will encounter many new terms and concepts. These can either relate to climate literacy, based on the latest definitions from the Intergovernmental Panel on Climate Change (IPCC) and other international bodies, or they can be specific Pathways2Resilience terms you will need to become familiar with to better follow the capacity building activities.

To help you navigate these, we will share with you a comprehensive glossary that will come in handy if you get lost in all these meanings. You will have access to it as part of the full onboarding kit.

We look forward to embarking on this transformative journey with you.

Together, we will build a resilient and adaptive future for all our regions, harnessing the power of collaboration, innovation, and shared learning.

**Any questions? Please contact
pathways2resilience@climate-kic.org**

About Pathways2Resilience

Adapting to climate change and building climate resilience in Europe has become crucial, as the disastrous impact of global warming starts to affect our continent, and especially its most vulnerable communities.

Pathways2Resilience is an EU-funded programme supporting more than 100 regions and communities across Europe to co-design innovative visions of a climate-resilient future. It is a flagship initiative of the EU Mission on Adaptation to Climate Change, building on assessment of climate risks and resilience opportunities, and helping regions formulate pathways to transformative adaptation in a locally-led and participatory way.

Thanks to practical guidelines, tools, and hands-on training and mentoring, the programme is supporting regions and communities in creating their own transformative adaptation strategies. Through two public calls, allocating a total of €21 million in cascade funding, selected regions will develop ready-to-implement innovation plans with concrete interventions supporting climate resilience.

Pathways2Resilience also provides locally-led Innovation Practice Groups engaging regions, local practitioners and citizens groups (with particular attention to vulnerable communities) and an Adaptation Finance Lab, to increase knowledge on innovative adaptation solutions and promote access to adaptation finance.

Project coordinator:



Consortium partners:



Stay up-to-date and engage with our channels

Visit our website:

www.pathways2resilience.eu

[Sign up to the Pathways2Resilience newsletter](#)

Follow us on social media:

