



PATHWAYS2RESILIENCE

Pathways2Resilience handbook

A region's guide to navigating your 18-month
journey to climate resilience



Funded by
the European Union



www.pathways2resilience.eu

Table of contents

Introduction	3
What is this handbook for?	3
Who is this handbook for?	3
How to use this handbook	3
Part 1: Your journey to climate resilience	4
Your destination: strengthening transformative climate adaptation and resilience.	4
Your local team: define roles and functions to actively participate.	5
Your roadmap: the Regional Resilience Journey	9
Your basecamp: the Resilience Maturity Curve	13
Your journey outputs: deliverables.	14
Your journey observations: monitoring and reporting	16
Part 2: Onboarding kit	17
Guidance for developing the climate resilience strategies and action plans	17
Guidance for developing the climate resilience investment plans	18
Key enabling conditions and key community systems	19
Capacity building activities	20
Pathways2Resilience Climate Toolbox.	24
Communications guidelines	24
Pathways2Resilience glossary	25
About Pathways2Resilience	27
Stay up-to-date and engage with our channels	27



Introduction

What is this handbook for?

This handbook is designed to support you, as Programme Manager or Head of the regional Pathways2Resilience team, in taking the first steps as a participant in the programme.

It provides an overview of the Pathways2Resilience framework and activities, and the practical tools and resources available to you as you undertake your journey to climate resilience. It will continue to be a valuable resource throughout your journey, helping you stay oriented during high-demand times and clarify any doubts. Additionally, it serves as a useful guide for new team members joining the project or for someone stepping in to replace you.

Starting in January 2026 and over the next 18 months, working with the Pathways2Resilience partners, your team is expected to produce several important [outputs and deliverables](#). This handbook is designed as a roadmap to help you gain confidence in understanding the tasks ahead and to ensure a smooth and organised approach.

Who is this handbook for?

This handbook is primarily **designed for Pathways2Resilience Programme Managers and/or Heads of Pathways2Resilience regional teams**.

As Programme Manager, you play a crucial role in overseeing the implementation and progress of the Pathways2Resilience programme within your region. Your responsibilities include ensuring that the programme's objectives are met, providing guidance and support to your team, and serving as the primary point of contact between the Pathways2Resilience consortium and your region.

How to use this handbook

In the [first part](#) of this handbook, you will find an overview of the programme's objectives and a description of the crucial concepts that you and your team will frequently encounter, as well as a timeline of major activities and a list of your main deliverables and reports.

Throughout this journey, your team and region will be guided and supported by an onboarding kit, providing specific guidance and capacity building activities prepared by the Pathways2Resilience programme experts. The [second part](#) of this handbook gives you an overview of the onboarding kit's content, and provides information about each resource, how you can use it, and how it fits in your journey and deliverables.

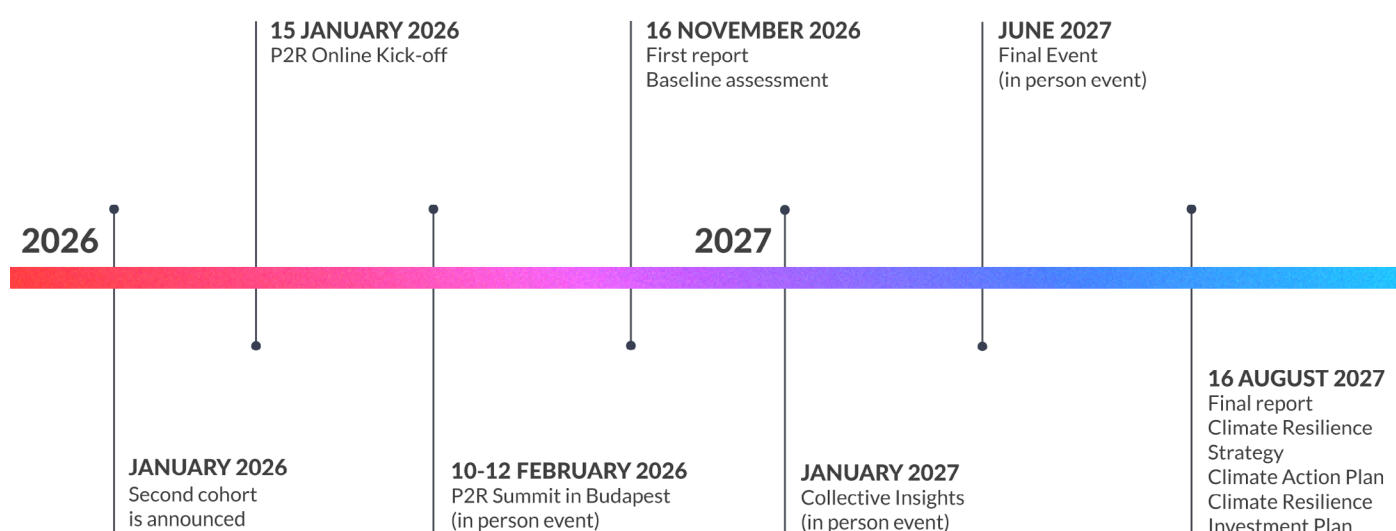
Part 1: Your journey to climate resilience

Welcome! You are about to embark on an exciting 18-month journey towards transformative climate adaptation and resilience in your region.

This journey is designed to equip you with the knowledge, tools, and support necessary to achieve significant milestones and create lasting impact.

Along the way, you will engage in various activities, training sessions, and collaborative efforts, all aimed at strengthening your region's ability to adapt to and thrive amidst climate challenges.

An overview of your 18-month journey



Your destination: strengthening transformative climate adaptation and resilience

Pathways2Resilience will support you to create a climate resilience strategy (outlining multiple 'pathways') with a systemic, transformative approach. The programme ensures all your outputs are in line with EU policy objectives, including the [EU Mission on Adaptation to Climate Change](#), the [European Green Deal](#), the [EU Climate Adaptation Strategy](#), and the upcoming [European Climate Resilience and Risk Management framework](#).

Climate impacts and adaptive capacities differ greatly across regions, from those already having detailed knowledge of climate risks and risk mitigation measures, a diversity of competencies, and well-functioning governance structures, to more vulnerable communities.

Depending on your resilience maturity, you will be able to access tailored training, peer-to-peer, and individual mentoring developed by Pathways2Resilience experts and other regions in your group.

Your local team: define roles and functions to actively participate



Forming a diverse, cross-sectoral team is crucial to navigate the Regional Resilience Journey and design successful strategies, action plans and investment plans. Engaging representatives from a range of departments and sectors ensures that all relevant perspectives and expertise are integrated, fostering a comprehensive approach to climate resilience.

Regions will be required to nominate a Pathways2Resilience programme manager and to bring in various roles and functions at different stages of the programme, to actively participate in and engage with the Pathways2Resilience activities.

Here's a brief description of the roles¹ that should be present in your team and are strongly recommended for direct involvement in the programme:



Pathways2Resilience programme manager (mandatory)

Responsible for overseeing the implementation and progress of the programme in their respective region, as well as the coordination of different regional functions and actors that will need to get involved in Pathways2Resilience (for example, social policy expert or innovation policy officer, among others).

The programme manager ensures that the programme's objectives are met, and they provide guidance and support to their teams. They are the main point of contact between the Pathways2Resilience consortium and the region.



Climate adaptation officer

Operates at regional level with a clear mandate to lead the development of a climate adaptation strategy. This role involves a deep understanding of adaptation planning and is responsible for guiding a region-wide approach to mitigate the impacts of climate change.

This role, alongside the technical officer role, will focus on the development of the baseline assessment, [climate resilience strategy](#) and [action plan](#).



Technical officer/consultant

Operates at the regional level and works closely together with the climate adaptation officer. This role is responsible for conducting the technical risk and options assessment activities that inform the development of the climate resilience strategy, including data collection, computational modelling of current and future risks, and the modelling of potential options and pathways.

They are also responsible for the development and specification of the adaptation monitoring plan to track ongoing adaptation needs. This role, alongside the climate adaptation officer role, will focus on the development of the baseline assessment, [climate resilience strategy](#) and [action plan](#).



Adaptation finance officer

Operates at regional level and leads day-to-day operations regarding the design and implementation of the financing of the regional climate resilience strategy.

This role will focus on the development of the financial aspects of the baseline assessment, as well as the [climate resilience investment plan](#).

¹ Please note these roles have been described in isolation but it is understood that two (or more) of these roles might be performed by the same person, depending on the specific profile, availability, etc. of the participant.

Community engagement coordinator

Responsible for facilitating dialogue between local stakeholders and the regional authorities, and ensuring that local communities are actively involved in the Pathways2Resilience programme.

This role engages with various stakeholders in the region, including vulnerable groups, private sector, and citizens, to ensure their concerns, hopes and expectations about regional climate resilience are heard and included in the process. To this end, they identify when and how these stakeholders can be involved and the process to effectively include their views in the baseline assessment, [climate resilience strategy](#) and [action plan](#).

They might also facilitate participatory processes such as visioning sessions and theory of change workshops. Note that this role can be filled in by a local non-governmental organisation (NGO) and/or academic experts with the ability to facilitate co-creation processes.



Political role

Operates at the regional level, providing strategic advice and support to elected political leaders on climate resilience and adaptation policies. The political role ensures that political leaders are well-informed about climate risks and the necessary adaptation strategies. This role involves advising on policy development, facilitating stakeholder engagement, and aligning political decisions with the region's climate resilience goals. This role plays a crucial part in ensuring political alignment and support at key stages of the programme.



Innovation expert

Focuses on the integration and promotion of innovative solutions within the climate resilience strategy at the regional level.

This role is responsible for identifying, developing, and implementing actions, including policies, that can foster innovation in climate adaptation and resilience. The innovation expert has a good understanding of how the region uses innovation in their socio-economic activities and other areas and ideally understands the different mechanisms to support innovation at the regional, national and EU level. This expert has a good network of collaborators from private sectors, civil society and research institutions who can bring innovative ideas into the climate resilience strategy. This role works closely with the climate adaptation officer and adaptation finance officer to ensure that potential innovation needs and opportunities feature in the [climate resilience strategy](#) and [action plan](#).

Note that this expert might come from a civil society and/or academic background.



It will also be important to involve a wide range of stakeholders in your local climate resilience coalition. This should include experts from relevant sectors or systems (for example, infrastructure housing, regional development, or nature).

It will also be important to involve colleagues from the regional government with general responsibility for funding and financing and managing regional budgets.

Finally, to support just and equitable resilience, it will be key to involve those most at risk from current and future climate change, as well as those most affected by the potential adaptation options.

Tailoring your team to your region's needs

A very diverse set of regions has been selected to participate in Pathways2Resilience, varying widely in terms of size, team composition, cultural context, priorities, government structures, and available resources. Therefore, it is important to tailor the suggested roles and approach to your region. The tips below will help you in doing this.

Tip #1: Flexibility

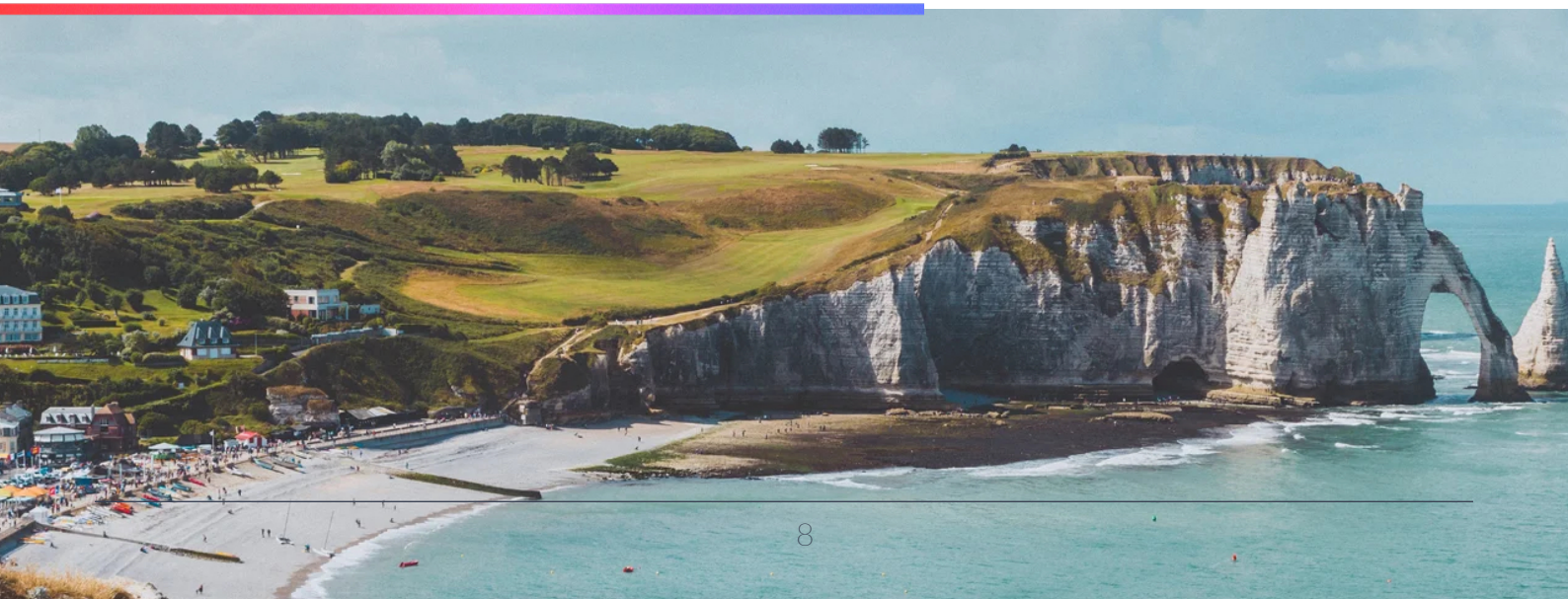
Flexibility in team roles and structures is essential to accommodate these differences. For example:

- **Combined roles:** In some regions, the roles of programme manager and climate adaptation officer, or programme manager and community engagement coordinator, may be held by the same person.
- **Multi-skilled officers:** A climate adaptation officer may also specialise in adaptation finance or technical aspects of adaptation, depending on their background and expertise.
- **Generalist roles:** In regions where there is no designated climate adaptation officer, it may be practical to delegate someone with a more general job title to lead the project.

Tip #2: The right skillset

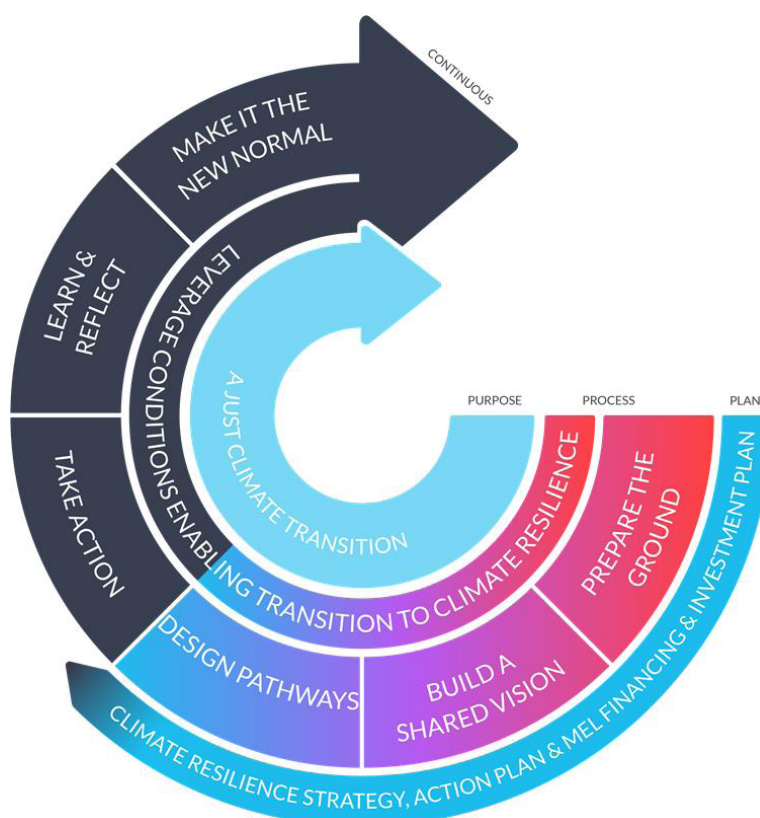
Instead of focusing on a specific number of team members, ensure your project includes the relevant competences and experience necessary for success. Your core team will also need to collaborate with a broader range of specialists and stakeholders. These additional team members are encouraged to participate in Pathways2Resilience activities and utilise the programme's resources. For example:

- Political roles, elected officers
- Cultural heritage manager



Your roadmap: the Regional Resilience Journey

Your journey to climate resilience will be underpinned by a rigorous theoretical framework, the 'Regional Resilience Journey', developed by Pathways2Resilience programme experts.



An overview of the Regional Resilience Journey you will undertake during Pathways2Resilience.

The Regional Resilience Journey is an adaptable process for regions and communities that wish to transition to climate resilience through a transformative adaptation approach. This means working in an innovative way that goes beyond handling one crisis or one hazard at a time, looking at the whole system to create lasting, coordinated solutions.

Over the next 18 months, the Regional Resilience Journey will support you in creating your transformative climate resilience strategy, alongside the other 60 regions awarded under Pathways2Resilience.

The framework provides step-by-step guidance, along with a set of activities, tools and milestones that will help your region to either develop your first climate resilience plans and intervention portfolios, or to improve your existing ones by applying a systemic approach, just transition principles and by harnessing transformative innovation.

In this sense, the Regional Resilience Journey is an iterative process: you are encouraged to use it multiple times, revisiting assumptions, learning from insights and stakeholder sentiment, even after project end. Gaps in knowledge, data or finance will become clear as different elements are explored or stakeholders engaged.

Important! It is not necessary to use the Regional Resilience Journey as a whole new methodology, starting from scratch. The framework is designed for you to collect the necessary information and to be used in the most strategic way possible, recognising that you know best what you need.

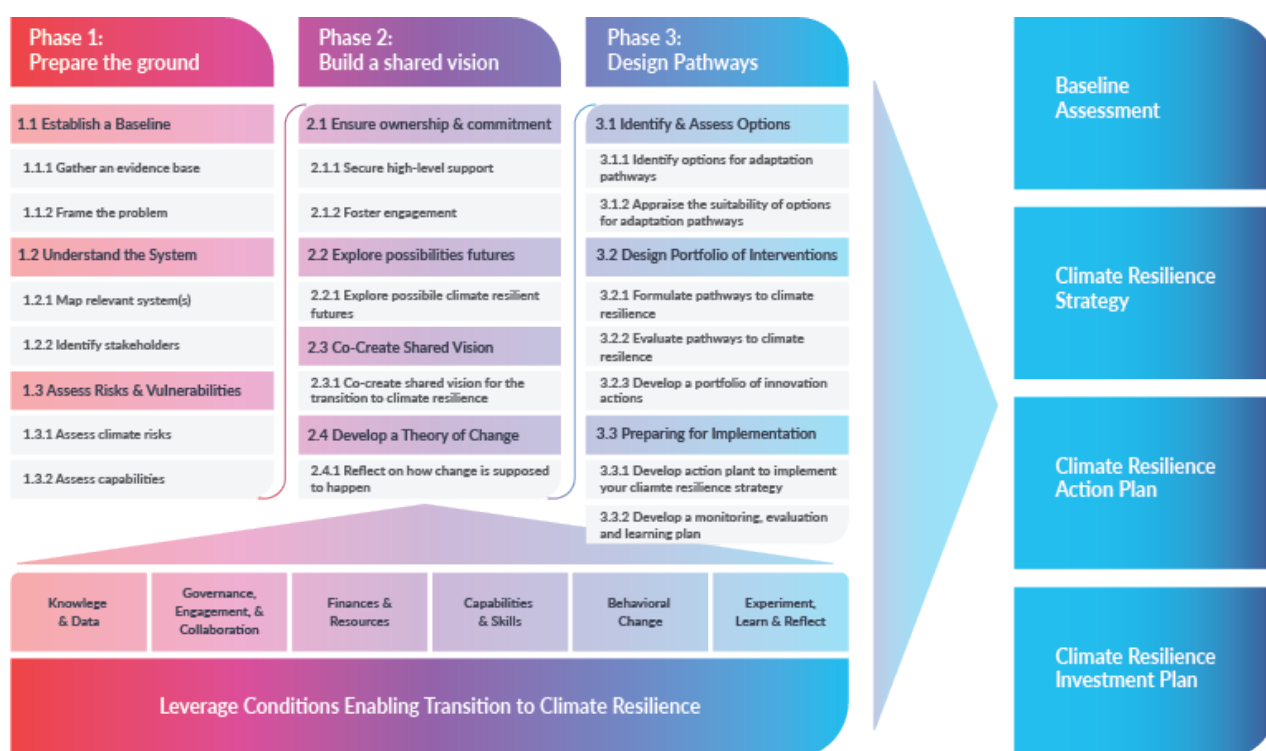


“The novelty of the Regional Resilience Journey is that it extends beyond the incremental nature of the [Regional Adaptation Support Tool \(RAST\)](#) developed by the European Environment Agency (EEA).

To help regions not just withstand but flourish in their future climates, we have incorporated steps and processes that introduce a transformative dimension, acknowledging the complexity of systemic change. And to integrate adaptation and mitigation efforts, we have deliberately aligned with the [Climate Transition Map](#) used by NetZeroCities.”

Thomas Koetz, Pathways2Resilience programme lead and senior advisor for climate resilient regions at Climate KIC

The three main phases of the Regional Resilience Journey



An overview of the three phases of the Regional Resilience Journey, supported by key enabling conditions (below), and resulting in core outputs (right).

**Phase 1:
Prepare the ground**

First, you need to set the ground for your ambitious work ahead. This means understanding what's already being done, who are the key actors and institutions you need to involve, and what actions will support long-term results (for example, upskilling and reskilling programmes). You also need to assess your climate risks and opportunities for prosperity.

**Phase 2:
Build a shared vision**

As a key, central step, you'll need to mobilise your local community and stakeholder groups, in order to build a shared vision that integrates different perspectives and just transition principles that everyone feels committed to. This will set the destination of your journey as well as roles and accountabilities. This is an essential moment to ensure the political agenda and various stakeholder interests align, making your work broadly supported and more impactful.

**Phase 3:
Design pathways**

In the last phase, you'll transform your ideas into concrete plans and actions. What's critical at this stage is to ensure the interventions you plan complement and reinforce each other, following what we call a 'portfolio' approach. This will help you mitigate risks, experiment and test, and withstand uncertainty. These coordinated interventions should also foster innovation by integrating research, new technologies, and collaboration across sectors and administrative departments.

Underpinning these phases and beyond: foster the enabling conditions

Before taking action, make sure your region is ready for this ambitious journey. This means enabling the right conditions so your region can strengthen its climate resilience.

These 'enabling conditions' include securing finance, gathering robust data, setting up governance structures, and generally ensuring widespread commitment and collaboration from local communities and groups.

It is fundamental to map these at the outset and further develop and strengthen them throughout your journey. They will make all the difference between 'simply' adapting to the changing climate and proactively shaping a resilient system capable of withstanding challenges far into the future (including those you cannot foresee).

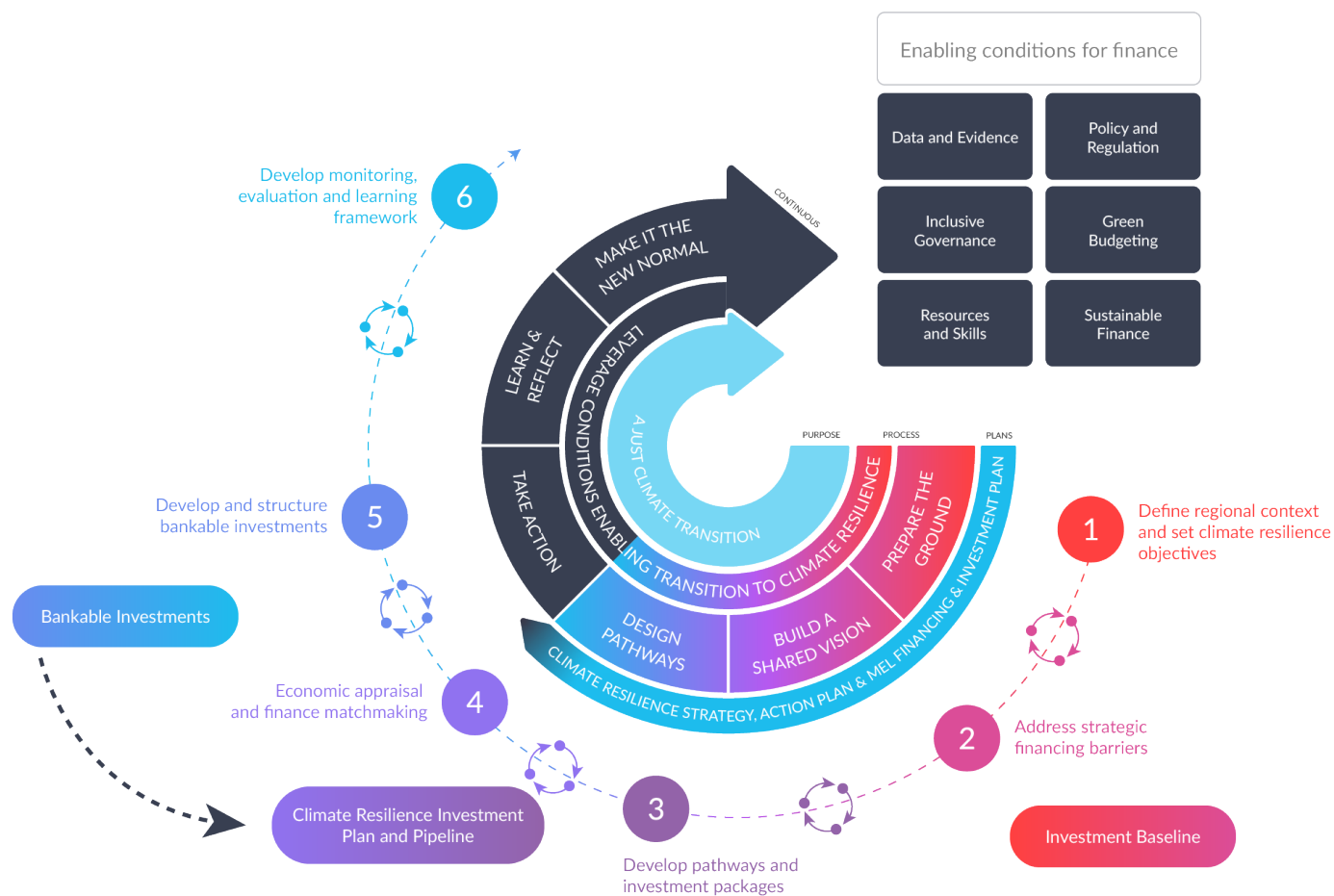
You will find further resources on the Regional Resilience Journey in the [guidance for developing the climate resilience strategies and action plans](#).

Financing your climate resilience strategy and action plan

Because the delivery of a climate resilience strategy and action plan depends on the availability of finance, and robust financing plans depend on knowing what you want to do, the Regional Resilience Journey is supported by an adaptation investment planning process, known as the Adaptation Investment Cycle.

This investment-led framework is designed to translate your high-level vision into a targeted adaptation investment strategy and ultimately a pipeline of bankable adaptation projects and programmes, resulting in a [climate resilience investment plan](#).

A summary of the process is shown here, with more details and resources in the dedicated [guidance for developing the climate resilience investment plans](#):



The Adaptation Investment Cycle within the Regional Resilience Journey.



Your basecamp: the Resilience Maturity Curve

As you applied to the Pathways2Resilience programme, you were asked to self-assess your resilience capacities through the Resilience Maturity Curve tool, which helps regions assess and monitor their readiness for transformative climate change adaptation, resulting in an adaptive capacity score.

The Resilience Maturity Curve (RMC) is a novel monitoring, evaluation and learning model developed by Pathways2Resilience experts. It combines evaluation of four resilience capacities: the capacity to anticipate, adapt, absorb, and transform. It recognises that regions and communities may have varying levels of resilience maturity. The overall resilience of a region is enhanced by acquiring these capacities. This can be achieved through a range of interventions that address both immediate and long-term regional adaptation needs.

The Resilience Maturity Curve is structured around a self-assessment questionnaire that aligns with the various steps of the Regional Resilience Journey, including the [key enabling conditions](#).

Your adaptive capacity score from the Resilience Maturity Curve tool is crucial for guiding your climate resilience pathways and innovation strategies, as it provides a clear picture of your current resilience maturity level.

Important! Your journey to climate resilience is not linear. You can retake the Resilience Maturity Curve self-assessment at any time, using it as a tool to continuously assess and monitor your progress.



Your journey outputs: deliverables

This part of your journey focuses on the crucial outputs that you will produce over the course of your Regional Resilience Journey, and will be the building blocks in formulating your region's climate resilience pathways. Each deliverable is linked to a specific phase of the Regional Resilience Journey. For each deliverable, we have developed a template that you will find in your onboarding kit. These templates are provided for guidance only; you are encouraged to adapt them to your own context and needs. Let's break down what you need to achieve and how you can do it:

1. CLIMATE RESILIENCE BASELINE ASSESSMENT

The baseline assessment covers key elements of the '[prepare the ground](#)' phase, including in particular:

- An assessment of current and predicted future climate risks and vulnerabilities, including a prioritisation of the key and most urgent ones.
- A description of the different sectors, including [key community systems](#), involved and impacted by the transition to climate resilience, including their relationships, key interdependencies and cascading effects; economic, social and ecological drivers and consequences; as well as policies impacting and impacted by climate risks and regional resilience maturity.
- An assessment of adaptive capacities, competences and resources relevant for achieving a just transition to climate resilience, including a list of needs that should be addressed as a matter of priority, for example regarding [key enabling conditions](#).
- A map of stakeholders, vulnerable groups and inequities, including a stakeholder assessment matrix mapping the interest and influence of each target group, and their impact in regional resilience; a stakeholder profile to identify their mandate, field of action and strategic interrelations; an influence map to scope out the impact of the project in the regional communities.



2. CLIMATE RESILIENCE STRATEGY

The climate resilience strategy covers key elements of the '[build a shared vision](#)' and 'design pathways' phases, including:

- A shared vision of the climate resilient future that the region wants to achieve, providing a compelling, engaged, co-created narrative that should allow you to mobilise stakeholders in your region required to implement and sustain your plan.
- A description of the adaptation and climate resilience transition pathways, outlining a portfolio of interventions drawn from a range of adaptation options. This should include an assessment of the effectiveness of identified options and their needs in terms of enabling conditions.
- A co-developed stakeholder engagement strategy and participatory design process, including the description of engagement mechanisms and structures. These can be planned or already established, and should be linked to the key enabling conditions.
- An overview of identified regional transformation potentials and possible climate resilient futures, including the key enabling conditions that regions and communities would need to address and strengthen (building on the baseline assessment).

3. CLIMATE RESILIENCE ACTION PLAN

The climate resilience action plan covers the final elements of the '[design pathways](#)' phase, including:

- A description of the short-term and mid-term activities that the region will conduct in order to implement its adaptation strategy, including priority of these actions, roles, responsibilities, and resources.
- A monitoring, evaluation and learning framework for implementing the action plan, adaptation pathways, and investment plan. This should include a description of how different actions contribute to the desired outcomes and changes, and identify how to monitor progress.
- An innovation agenda (that is, a set of innovation activities) in support of the adaptation pathways.



4. CLIMATE RESILIENCE INVESTMENT PLAN

The climate resilience investment plan translates the shared vision into an adaptation investment strategy and a pipeline of bankable projects, ensuring financial resources are available to deliver the climate resilience action plan. Its key components include:

- A summary of the investment context in your region, including an assessment of current and future costs, and the relevant investment processes and criteria.
- An analysis of additional financial sources and instruments to explore, as well as actions to address strategic financing barriers.
- An economic and financial evaluation of adaptation options identified in the action plan.
- A pipeline of bankable projects associated with the action plan, along with actions to improve the enabling conditions for financing and to develop sound business plans.
- If relevant, a finance-related monitoring, evaluation and learning approach.



Your journey observations: monitoring and reporting

In order to unlock the financial support and allow monitoring of your journey, you'll be required to provide reports of your activities to the Pathways2Resilience team. Each report will include both technical and financial aspects:

- The technical aspect will include monitoring progress through the four deliverables, key indicators, as well as feedback on the Pathways2Resilience programme.
- The financial aspect will focus on the actual eligible costs you've incurred, comparing to the original budget, and justify deviations.

We will provide you with the relevant forms and templates at least three months prior to the report submission deadline.

Payments to subgrantees will be made in instalments to allow for monitoring of deliverables and risk mitigation, following the planned payment schedule below:

Payment instalment	Reporting period	Deadline to submit the report	Payment description	Percent of subgrant award paid
1	N/A	N/A	Pre-payment made after subgrant agreement is signed.	30
2	1 January 2026 – 30 September 2026 (months 1-9)	16 November 2026 (month 11)	Payment made within 6 months after approval of 1 st reporting.	Up to 40
3	1 October 2026 – 30 June 2027 (months 10-18)	16 August 2027 (month 20)	Payment made within 6 months after approval of 2 nd reporting.	Up to 30

Please note:

- Payments will be subject to satisfactory reporting and associated financial risk factors, as outlined in the subgrant agreements.
- Payment instalments 2 and 3 will be distributed under an actual cost-funding model, meaning that reimbursement will be made against verified eligible costs.
- The “percent of subgrant award paid” presented in the table indicates the maximum amount that may be released during the respective reporting period, subject to the submission and approval of sufficient eligible costs.

Part 2: Onboarding kit

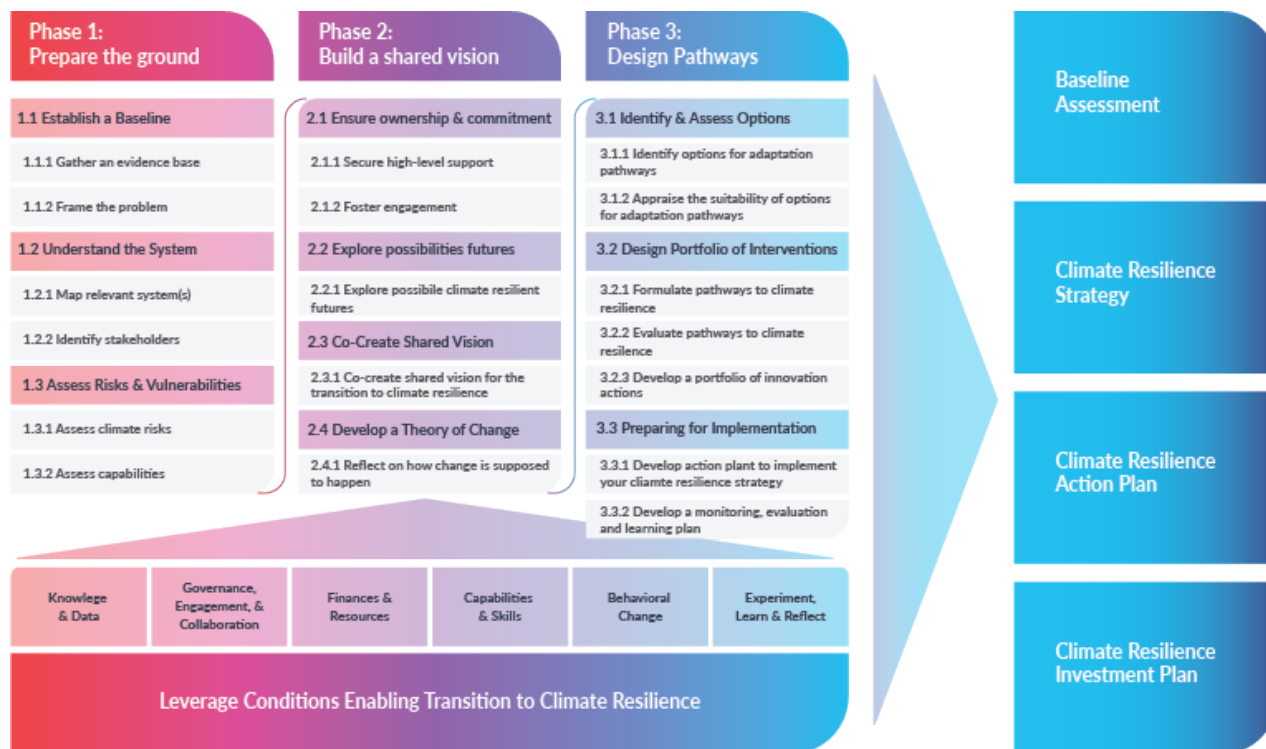
The onboarding kit is a collection of resources, materials, guidance, and guidelines designed to support you and your region throughout your journey in Pathways2Resilience.

Below is a brief overview of the key documents that you will receive as part of the onboarding kit. These resources are tailored to provide essential tools and information to help you achieve your deliverables, and broadly support your region to achieve climate resilience.

Guidance for developing climate resilience strategies and action plans

The guidance document *Developing regional climate resilience strategies* and action plans sets out the approach to develop the baseline assessment, climate resilience strategy and action plan for your region (see [outputs and deliverables](#)).

It covers the first three phases of the Regional Resilience Journey, broken down into 18 separate tasks, as well as listing the enabling conditions that should be leveraged. These are shown below:



The phases and tasks to develop a baseline assessment, a climate resilience strategy and an action plan.

The guidance has been designed specifically for those leading or contributing to the development of your region's climate resilience strategy and action plan, as well as those who need to be aware of the approach taken, such as:

- Those engaged or participating in the development of a climate resilience strategy and/or investment plan, who want to understand the process in more detail.
- Technical staff or consultants supporting regions in developing elements of your climate resilience strategy and action plan, including more detailed technical guidance for each task in the annex of the guidance document.

Guidance for developing the climate resilience investment plans

As part of the overall Regional Resilience Journey, Pathways2Resilience has developed an Adaptation Investment Cycle to support the development of a climate resilience investment plan, which translates the shared vision into adaptation investment strategies and bankable projects.

The Adaptation Investment Cycle is a flexible framework, aligned to the Regional Resilience Journey phases, meaning that some inputs are relevant for the journey, and vice versa.

It involves 18 tasks, over six phases (shown in the figure below). These coincide with Regional Resilience Journey activities at key stages, notably the development and assessment of adaptation options, pathways and action plans, where financial and economic viability are key factors in deciding whether and when to proceed with different actions.

The guidance document *Developing regional climate resilience investment plans* outlines each phase and task of the Adaptation Investment Cycle.



The phases and tasks to develop a climate resilience investment plan.

This guidance is developed for those leading the development of your region's climate resilience investment plan, as well as those who need to be aware of the approach, such as:

- Those being engaged in or participating in the development of a climate resilience strategy and/or investment plan, who want to understand the process in more detail.
- Financing institutions or businesses who are being asked to support adaptation in a region, or who may be proactively looking for investment opportunities.
- Consultants supporting regions in developing elements of their climate resilience investment plans.

Throughout the detailed technical guides, we have highlighted the key links between the Regional Resilience Journey and the Adaptation Investment Cycle, to allow those leading each process to draw from the other. A full overview of the links between the two processes is included in the appendix of each guide.

Key enabling conditions and key community systems

To accelerate transformative climate resilience, it is fundamental to establish a regional environment where such change can take place.

Key Enabling Conditions (KECs) are 'catalysing' elements in this process. They include access to knowledge and data, governance models, stakeholder engagement, financial resources, and skills. These conditions represent cross-cutting areas that are relevant for regions across different resilience maturities.

Mapping these enabling conditions from the outset and continuously developing and fostering them during your Regional Resilient Journey is crucial to meet your objective of a just climate transition.

Given the importance of finance, Pathways2Resilience has included dedicated resources in our [guidance for developing the climate resilience investment plans](#), while the remaining key enabling conditions are covered in the [guidance for developing the climate resilience strategies and action plans](#).

Key Community Systems (KCS) are those key areas of interaction between humans and the environment, that meet essential societal needs but are increasingly impacted by climate change. You will be guided to analyse and act upon six KCS, but please note that these are broadly defined categories that can overlap or be adjusted depending on your context:

- Ecosystems and nature-based solutions
- Land use and food systems
- Water management
- Critical infrastructure
- Health and human wellbeing
- Local economic systems.

Further resources and guidance on how to identify and strengthen these KECs and KCSs will be directly addressed through the Innovation Practice Groups that Pathways2Resilience is facilitating to exchange best practices amongst regions and practitioners as part of the [capacity building activities](#).



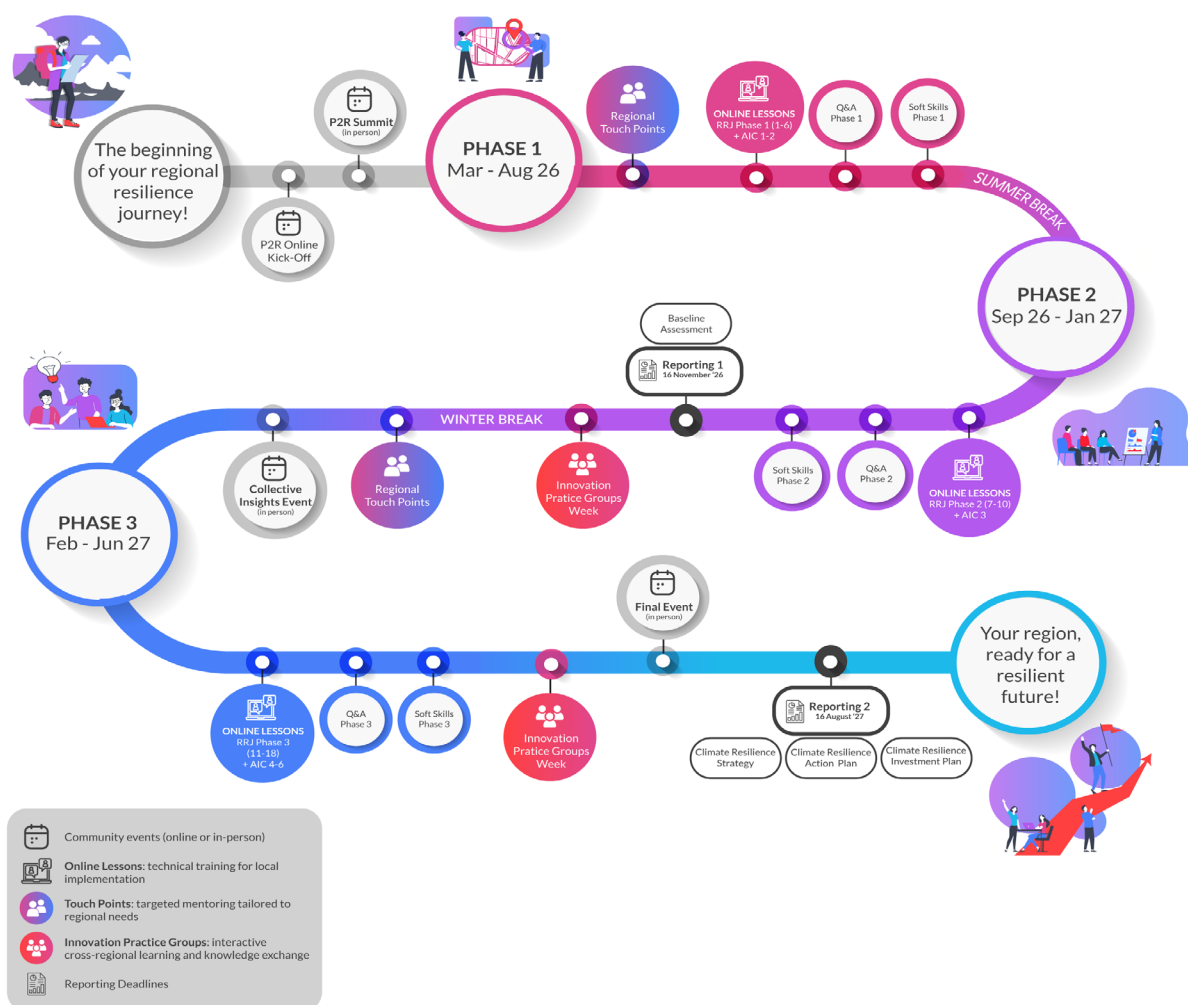
Capacity building activities

Developing a transformative climate resilience strategy is an ambitious undertaking. To support you in this journey, we have designed an innovative 18-month capacity building and knowledge exchange programme of activities. This programme is structured to provide you with the insights needed to integrate into the context and practices of your region. Through a combination of interactive, engaging, and transformative learning exchanges, you will gain the skills and knowledge needed to drive meaningful change.

As part of your onboarding kit, you will receive a link to a Pathways2Resilience Capacity Building & Support Platform, where you can access detailed information on all the capacity building activities outlined in the programme. This board will serve as a central reference point, helping you plan your participation across the different learning opportunities.

The Pathways2Resilience programme is carefully planned to balance your existing tasks, requiring an average time commitment of two days per month. Activities are scheduled from January 2026 to July 2027, with sessions taking place on the first Tuesday and third Thursday of each month (for example, Tuesday 3 March 2026 and Thursday 19 March 2026). Most of the learning activities will be conducted online, with the exception of the three in-person events. The programme also considers the seasonal nature of your work, with fewer activities scheduled around December and during the summer months.

The Pathways2Resilience programme will collaboratively build knowledge across a range of thematic areas, bringing together experts, practitioners, citizen groups, and key economic sectors. Here's an overview of your 18-month learning journey:



As illustrated in the image, the 18-month programme is structured into three main phases, reflecting the first three phases of the Regional Resilience Journey. Throughout these phases, participating regions will be invited to take part in a series of core activities designed to strengthen their technical, strategic, and collaborative capacities for advancing regional climate resilience. The core activities include:

ONLINE LESSONS

These practical online training sessions are designed to build the technical capabilities that regions will need to complete their climate resilience strategy, climate resilience action plan and climate resilience investment plan, through novel learning experiences focusing on climate adaptation, covering all elements of the Regional Resilience Journey and the associated Adaptation Investment Cycle.

A comprehensive calendar of activities has been prepared to support regions throughout their journey, ensuring you receive timely and relevant training at each stage of the process.



Q&A SESSIONS

The Q&A sessions offer informal spaces for additional support and peer exchange. At the end of each programme phase, a dedicated Q&A session will be organised, providing regions with the opportunity to meet with Pathways2Resilience partners and experts to seek clarification, request guidance, and discuss how to apply specific tools and methodologies. Regions are invited to actively participate in these sessions to receive tailored support and feedback on their progress, helping them consolidate learning and strengthen the implementation of their resilience strategies.

SOFT SKILLS SESSIONS

The soft skills sessions are dedicated to strengthening the human and relational dimensions of regional adaptation work. These sessions aim to enhance your ability to collaborate effectively, communicate with impact, and lead change within your regional context. A dedicated Soft Skills Day will be delivered at the end of each programme phase, offering participants the opportunity to reflect, connect, and further develop the personal and collective competencies that underpin successful resilience building.

INNOVATION PRACTICE GROUPS



The Innovation Practice Groups are dynamic, interactive spaces designed to foster **cross-regional learning and knowledge exchange**.

By highlighting on-the-ground initiatives from regions and communities and bringing innovative climate adaptation solutions into the discussion, these sessions aim to support the locally-led development of shared visions, pathways, and innovation agendas.

Organised around different topics, each session examines various [key community systems](#) and [key enabling conditions](#) that help regions progress on their journey toward climate resilience.

During the Innovation Practice Group Weeks, you will be invited to present a case study that highlights lessons learned, success stories, or key challenges faced in your region.

The Innovation Practice Groups offer a valuable opportunity to showcase your region's work, exchange insights with experts and peers from diverse contexts, and gather constructive feedback.

Together, we aim to identify practical pathways to advance adaptation efforts, fostering a community of practice dedicated to strengthening regional climate resilience.



In addition to the core Capacity Building Programme, you may voluntarily choose to take part in one or more of the following additional capacity building components. Please note that some of these components have a limited number of places available.

REGIONAL TOUCH POINT

These are informal and optional one-on-one sessions (45–60 minutes) between your regional team and the Pathways2Resilience partners. You will have a relaxed space to talk about your progress, highlight any challenges, and let us know how we can better support you. These sessions are a great opportunity to connect more with Pathways2Resilience, get help with navigating the support programme and to share feedback.



The first Regional Touch Point opportunity will be shortly after the Pathways2Resilience Summit (10-12 February 2026), to help with onboarding and introductions. After the baseline assessment is submitted, we will connect for a second Regional Touch Point to discuss your progress.

Whenever possible, we'll aim to hold the session in your preferred language, depending on the language capacities within the Pathways2Resilience team. We may also group regions with similar questions and experiences for the second Regional Touch Point series.

1:1 SUPPORT PROGRAMME

This is a specific series of technical, one-on-one support sessions delivered over the 18 months of the Pathways2Resilience programme, offered to only five regions from your cohort. Following a selection process, these five regions will have the opportunity to work closely with expert partners on the formulation of their adaptation pathways and innovation portfolios, as well as their climate resilience investment plans. Each session offers tailored, practical guidance grounded in the region's specific context, needs, and level of resilience maturity. You'll be able to explore the concepts and methodologies introduced during the training sessions in greater depth and receive targeted assistance to develop adaptation finance strategies and resource mobilisation plans.

Pathways2Resilience experts will also act as finance knowledge brokers, helping connect regions with relevant financial institutions and opportunities. The 1:1 support programme will be facilitated through monthly calls with the Pathways2Resilience team, creating a dedicated technical space for collaboration, progress review, and continuous learning. **More information about this opportunity – including the detailed timeline and instructions on how to express your interest in the 1:1 support programme – [at this link](#).**

PEER-LED MENTORING PROGRAMME

The Peer-Led Mentoring programme is designed to foster mutual learning and collaboration between European regions, helping them strengthen their climate resilience through direct, peer-to-peer exchange. The programme will establish a mentor-mentee relationship: regions with more mature resilience plans – having already advanced through their own structured resilience process – will take on the role of mentors. They will share insights, lessons learned, and approaches that have already been tested in practice. Regions that are at the beginning of their resilience journey will participate as mentees, benefiting from personalised guidance, tailored advice, and hands-on support from these more experienced peers as they begin shaping their own adaptation pathways.

Each mentor will be paired with up to two mentees, forming small learning clusters that promote decentralised exchange and continuous knowledge sharing. These clusters create a collaborative environment where regions can jointly explore practical challenges, co-develop locally relevant solutions, and accelerate the implementation of climate adaptation actions. Through the Peer-Led Mentoring programme, regions will gain the opportunity to showcase their expertise, engage in structured dialogue, and strengthen their resilience capacities by learning directly from peers who have successfully advanced through the Pathways2Resilience process.

Pathways2Resilience Climate Toolbox

The **Pathways2Resilience Climate Toolbox**, that you can access via [our website](#), is designed to support and guide you during your Regional Resilience Journey and beyond. This web-based toolbox offers a well-organised collection of open-access tools and resources, structured in a user-friendly manner to align with the key tasks you will undertake in your journey.

The toolbox contains the tools and materials referred to in the [guidance for developing the climate resilience strategies and action plans](#) and [investment plans](#), as well as additional relevant resources. These will help you understand how you can carry out the tasks at each stage of the Regional Resilience Journey in order to meet the programme's objectives.

The toolbox allows you to find tools and resources using different filters, such as specific climate hazards, type of tool, tool complexity and language. It also allows you to search by word for very specific requests.

The toolbox is intended for a diverse group of users, including individuals, groups, or organisations involved in adapting, transforming, and enhancing regional resilience. It is particularly relevant to those involved in urban or regional planning, budget allocation for innovative solutions, environmental departments and private landowners dealing with climate hazards, as well as development and innovation departments.

Communications guidelines

Launching your cohort: spread the word with us!

To celebrate the launch of your cohort's Regional Resilience Journey, we will make a public announcement on the Pathways2Resilience and partner channels on 27 January 2026 introducing the 61 selected regions, your 18-month journey and the highlights of the programme.

We would like you to join the campaign to maximise visibility, build engagement and benefit from this buzz! We are preparing a specific toolkit with communications materials you can adapt, translate, and share on your channels and with your local networks. You will receive the launch toolkit as part of your onboarding kit:

A press release for publication on your own channels (as a news article on your website, in your newsletters) or for sharing with media outlets.

Two draft social media posts and two visuals.

Guidance and tips on hashtags, social media accounts to tags, and timings.

Important! Make sure to share the launch toolkit with your communications department and relevant partners to be ready to announce your selection.

Communicating your regional resilience journey progress

To help you communicate about your participation in the Pathways2Resilience programme and widely share your activities and results, we have prepared some guidance materials and templates that you can share online, print, or adapt into your language(s). You will be able to download these from the full onboarding kit.



Templates: Canva visuals for your social media channels and website; a simple flyer you can translate in your language.



Communication materials: flyers, roll-ups, posters, email banner.



Visual Identity guidelines: logos, colour palette, graphic elements



Social media guidelines: recommended hashtags and tags, sample social media post you can adapt or translate, tips for when to post.

Pathways2Resilience glossary

Pathways2Resilience is an ambitious programme that aims at equipping you with knowledge and skills in a range of complex fields (including innovation, finance, monitoring and evaluation). In your 18-month journey, you will encounter many new terms and concepts.

These can either relate to climate literacy, based on the latest definitions from the Intergovernmental Panel on Climate Change (IPCC) and other international bodies, or they can be specific Pathways2Resilience terms you will need to become familiar with to better follow the capacity building activities.

To help you navigate these, we have prepared a comprehensive glossary that will come in handy if you get lost in all these meanings. You can access it [here](#).

We look forward to embarking on this transformative journey with you.

Together, we will build a resilient and adaptive future for all our regions, harnessing the power of collaboration, innovation, and shared learning.

**Any questions? Please contact
pathways2resilience@climate-kic.org**

About Pathways2Resilience

Adapting to climate change and building climate resilience in Europe has become crucial, as the disastrous impact of global warming starts to affect our continent, and especially its most vulnerable communities.

Pathways2Resilience is an EU-funded programme supporting more than 100 regions and communities across Europe to co-design innovative visions of a climate-resilient future. It is a flagship initiative of the EU Mission on Adaptation to Climate Change, building on assessment of climate risks and resilience opportunities, and helping regions formulate pathways to transformative adaptation in a locally-led and participatory way.

Thanks to practical guidelines, tools, and hands-on training and mentoring, the programme is supporting regions and communities in creating their own transformative adaptation strategies. Through two public calls, allocating a total of €21 million in cascade funding, selected regions will develop ready-to-implement innovation plans with concrete interventions supporting climate resilience.

Pathways2Resilience also provides locally-led Innovation Practice Groups engaging regions, local practitioners and citizens groups (with particular attention to vulnerable communities) and an Adaptation Finance Innovation Lab, to increase knowledge on innovative adaptation solutions and promote access to adaptation finance.

Project coordinator:  **ClimateKIC**

Consortium partners:



Stay up-to-date and engage with our channels

Visit our website:

www.pathways2resilience.eu

[Sign up to the Pathways2Resilience newsletter](#)

Follow us on social media:



Funded by
the European Union

This project received funding from the European Union's Horizon Europe research and innovation programme under grant agreement No 101093942.